

APC580Hu01 1

Active Lysyl Oxidase (LOX)

Organism Species: *Homo sapiens* (Human)

Instruction manual

FOR RESEARCH USE ONLY

NOT FOR USE IN CLINICAL DIAGNOSTIC PROCEDURES

12th Edition (Revised in Aug, 2016)

[PROPERTIES]

Source: Prokaryotic expression

Host: E. coli

Residues: Pro213~Tyr417

Tags: N-terminal His and GST Tag

Purity: > 90%

Buffer formulation: 20mM Tris, 150mM NaCl, pH8.0, containing 1mM EDTA, 1mM DTT, 0.01% SKL, 5% Trehalose and Proclin300.

Applications: Cell culture; Activity Assays.

(May be suitable for use in other assays to be determined by the end user.)

Predicted isoelectric point: 6.2

Predicted Molecular Mass: 53.7kDa

Accurate Molecular Mass: 53kDa as determined by SDS-PAGE reducing conditions.

[USAGE]

Reconstitute in 20mM Tris, 150mM NaCl (pH8.0) to a concentration of 0.1-1.0 mg/mL. Do not vortex.

[STORAGE AND STABILITY]

Storage: Avoid repeated freeze/thaw cycles.

Store at 2-8°C for one month.

Aliquot and store at -80°C for 12 months.

Stability Test: The thermal stability is described by the loss rate. The loss rate was determined by accelerated thermal degradation test, that is, incubate the protein at 37°C for 48h, and no obvious degradation and precipitation were observed. The loss rate is less than 5% within the expiration date under appropriate storage condition.

[SEQUENCE]

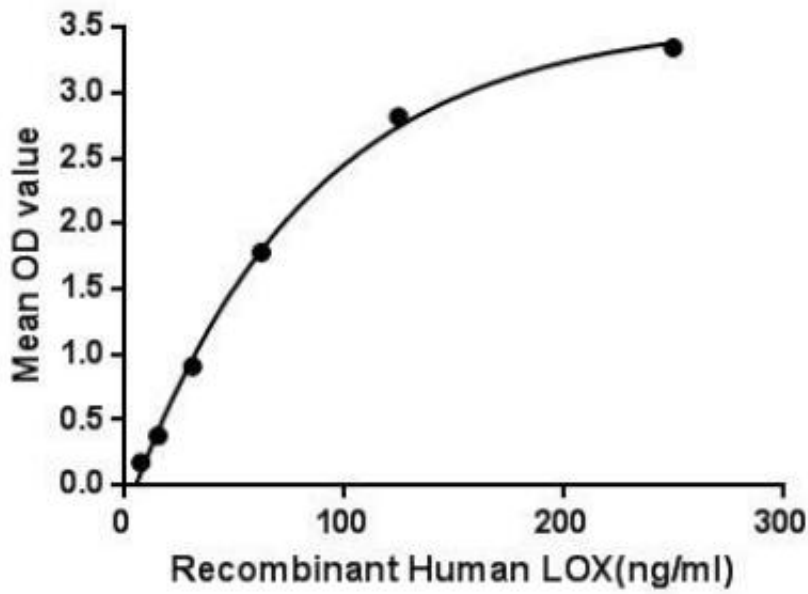


Figure 1. The binding activity of LOX with ELN.

[IDENTIFICATION]

GGGGGAAACTGCTGGGAGTACAGCATA CAGGGCAGTGT CAGAGATTATGATCA CAGGCTGCTCTCAGATTTC CCAAGAGTCAAAAACAGGGACATCAGATTTCTTACCCAGCCGACAGATATTCTGGGATGGCAGCTGGTCAACATTACCA CAGTATGGATGAGTTTAGCCACTAGACCTGCTT

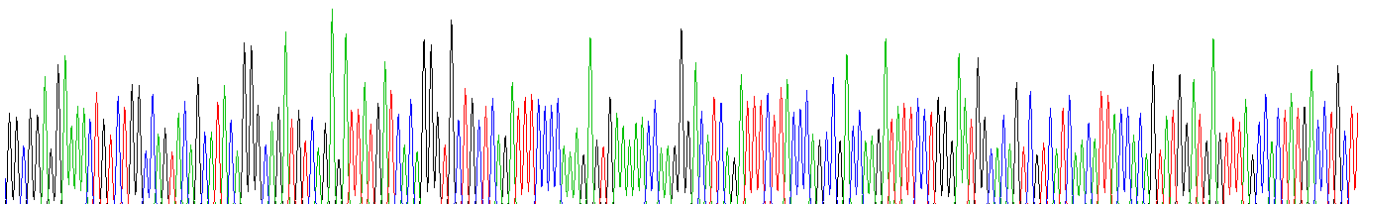


Figure . Gene Sequencing (extract)

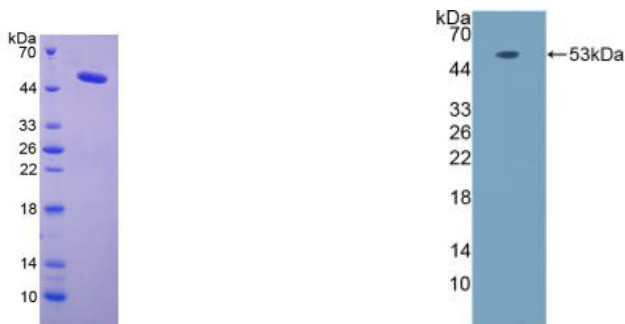


Figure. Western Blot; Sample:
Recombinant LOX, Human.

[IMPORTANT NOTE]

The kit is designed for research use only, we will not be responsible for any issue if the kit was used in clinical diagnostic or any other procedures.