

**CAB932Hu01**  
**Anti-Glyceraldehyde-3-Phosphate Dehydrogenase (GAPDH)**  
**Polyclonal Antibody**  
**Organism Species: Homo sapiens (Human)**  
***Instruction manual***

FOR RESEARCH USE ONLY  
NOT FOR USE IN CLINICAL DIAGNOSTIC PROCEDURES

---

12th Edition (Revised in Aug, 2016)

## **[ PROPERTIES ]**

**Source:** Polyclonal antibody preparation

**Host:** Rabbit

**Purification:** Antigen-specific Affinity Chromatography.

**Traits:** Liquid

**Concentration:** 1mg/mL

**UOM:** 100µl

**Applications:** Loading Control of WB.

## **[ IMMUNOGEN ]**

**Immunogen:** Recombinant GAPDH (Gly2~Ser148) expressed in *E.coli*.

**Accession No.:** RPB932Hu01

## **[ ORGANISM SPECIES MORE ]**

**React with:** Human, mouse, rat, rabbit, gallus, canine, cavia, simian, porcine;  
Other species have not been detected.

## **[ APPLICATIONS ]**

Western blotting: 1:500-2000

Optimal working dilutions must be determined by end user.

## **[ FORMULATION ]**

**Form & Buffer:** Supplied as solution form in 0.01M PBS, pH7.4, containing 0.05% Proclin-300, 50% glycerol.

## **[ STORAGE AND STABILITY ]**

**Storage:** Avoid repeated freeze/thaw cycles.

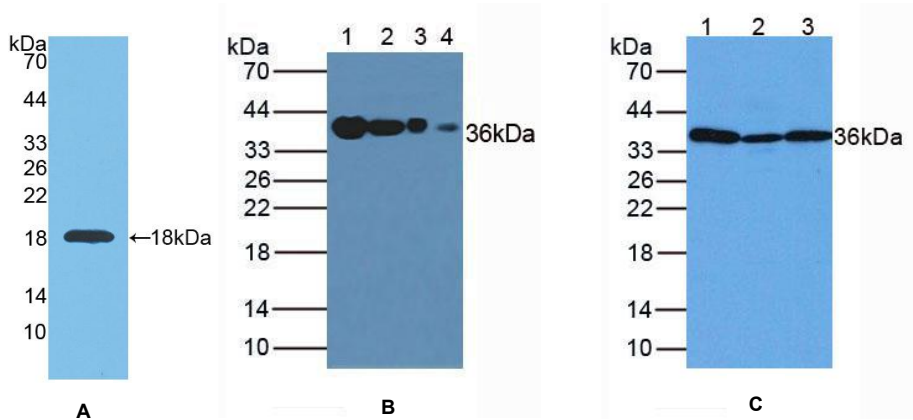
Store at 4°C for frequent use.

Aliquot and store at -20°C for 12 months.

**Stability Test:** The thermal stability is described by the loss rate. The loss rate was determined by accelerated thermal degradation test, that is, incubate the protein at 37°C for 48h, and no obvious degradation and precipitation were

observed. The loss rate is less than 5% within the expiration date under appropriate storage condition.

**[ IDENTIFICATION ]**



**Figure 1. Western Blot**

**A. Sample: Recombinant GAPDH, Human**

**B. Lane1: Human Liver Tissue**

**Lane2: Human Lung Tissue**

**Lane3: Human Cartilage Tissue**

**Lane4: Human Lymphocytes**

**C. Lane1: Human Liver Tissue**

**Lane2: Mouse Lung Tissue**

**Lane3: Mouse Placenta**

**Primary Ab: 1:200 Dilution of Rabbit Anti-Human GAPDH Ab**

**Second Ab: 1:2000 Dilution of HRP-Linked Guinea pig Anti-Rabbit Ab (Catalog: SAA544Rb59)**

**[ Important Note ]**

The kit is designed for in vitro and research use only, we will not be responsible for any issue if the kit was used in clinical diagnostic or any other procedures.



*Cloud-Clone Corp.*