

**PAD234Hu01**

**Polyclonal Antibody to Keratin 6A (KRT6A)**

**Organism Species: Homo sapiens (Human)**

***Instruction manual***

FOR IN VITRO USE AND RESEARCH USE ONLY  
NOT FOR USE IN CLINICAL DIAGNOSTIC PROCEDURES

9th Edition (Revised in Jul, 2013)

## [ **PRODUCT INFORMATION** ]

**Immunogen:** KRT6A, Human

**Clonality:** Polyclonal

**Host:** Rabbit

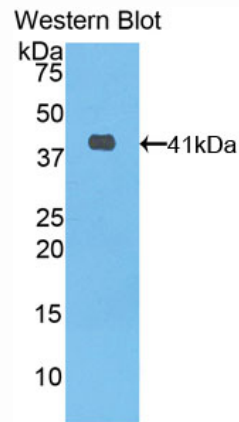
**Immunoglobulin Type:** IgG

**Purification:** Affinity Chromatography.

**Applications:** WB, ICC, IHC-P, IHC-F, ELISA

**Concentration:** 200µg/mL

**UOM:** 100µg



*Sample: Recombinant KRT6A, Human*

## [ **IMMUNOGEN INFORMATION** ]

**Immunogen:** Recombinant KRT6A (Glu163~Leu468) expressed in *E. coli*.

**Accession No.:** RPD234Hu01

**Sequence:** The target protein is fused with two N-terminal Tags, His-tag and S-tag and its sequence is listed below.

MHHHHHHSSG LVPRGSGMKE TAAAKFERQH MDSPDLGTDD DDKAMADIGS EF-  
EREQIKTL NKNFASFIDK VRFLEQQNKV LETKWTLLEQ QGKTQVRQNL EPLFEQYINN  
LRRQLDSIVG ERGRLDSELR GMQDLVEDFK NKYEDEINKR TAAENEFVTL KKDVDAAYMN  
KVELQAKADT LTDEINFLRA LYDAELSQQM THISDTSVVL SMDNNRNLDL DSIIAEVKAQ  
YEEIAQRSRA EAESWYQTKY EELQVTAGRH GDDLNRNTKQE IAEINRMIQR LRSEIDHVKK  
QCANLQAAIA DAEQRGEMAL KDAKNKLEGL EDALQKAKQD LARLLKEYQE LMNVKALLDV  
EIATYRKL

## **[ ANTIBODY SPECIFICITY ]**

The antibody is a rabbit polyclonal antibody raised against KRT6A. It has been selected for its ability to recognize KRT6A in immunohistochemical staining and western blotting.

## **[ APPLICATIONS ]**

Western blotting: 1:100-400

Immunocytochemistry in formalin fixed cells: 1:100-500

Immunohistochemistry in formalin fixed frozen section: 1:100-500

Immunohistochemistry in paraffin section: 1:50-200

Enzyme-linked Immunosorbent Assay: 1:100-200

Optimal working dilutions must be determined by end user.

## **[ CONTENTS ]**

**Form & Buffer:** Supplied as solution form in PBS, pH7.4, containing 0.02%  $\text{NaN}_3$ , 50% glycerol.

## **[ QUALITY CONTROL ]**

**Content:** The quality control contains recombinant KRT6A (Glu163~Leu468) disposed in loading buffer.

**Usage:** 10uL per well when 3,3'-Diaminobenzidine(DAB) as the substrate.  
5uL per well when used in enhanced chemiluminescent (ECL).

**Note:** The quality control is specifically manufactured as the positive control. Not used for other purposes.

**Loading Buffer:** 100mM Tris(pH8.8), 2% SDS, 200mM NaCl, 50% glycerol, BPB 0.01%,  $\text{NaN}_3$  0.02%.

## **[ STORAGE ]**

Store at 4°C for frequent use. Stored at -20°C to -80°C in a manual defrost freezer for one year without detectable loss of activity. Avoid repeated freeze-thaw cycles.