

**PAB317Mu01****Polyclonal Antibody to Perforin 1 (PRF1)****Organism Species: Mus musculus (Mouse)*****Instruction manual***

FOR IN VITRO USE AND RESEARCH USE ONLY  
NOT FOR USE IN CLINICAL DIAGNOSTIC PROCEDURES

---

---

9th Edition (Revised in Jul, 2013)

**[ PRODUCT INFORMATION ]****Immunogen:** PRF1, Mouse**Clonality:** Polyclonal**Host:** Rabbit**Immunoglobulin Type:** IgG**Purification:** Affinity Chromatography.**Applications:** WB, ICC, IHC-P, IHC-F, ELISA**Concentration:** 200µg/mL**UOM:** 100µg**[ IMMUNOGEN INFORMATION ]****Immunogen:** Recombinant PRF1 (Val40~Lys355) expressed in *E.coli*.**Accession No.:** RPB317Mu01**Sequence:** The target protein is fused with two N-terminal Tags, His-tag and GST-tag and its sequence is listed below.

MSPILGYWKI KGLVQPTRL L LEYLEEKYEE HLYERDEGDK WRNKKFELGL EFPNLPYYID  
GDVKLTQSMA IIRYIADKHN MLGGCPKERA EISMLEGAVL DIRYGVSR IA YSKDFETLKV  
DFLSKLP EML KMFEDRLCHK TYLNGDHVTH PDFMLYDALD VVLYMDPMCL DAFP KLVCFK  
KRIEAIPQID KYLKSSKYIA WPLQGWQATF GGDHPPKSD GSTSGSGHHH HHSAGLVPR  
GSTAIGMKET AAKFERQHM DSPDLGTLEV LFQGPLGSEF- V WMAGEGMDVT  
TLRRSGSFPV NTQRFLRPDR TCTLCKNSLM RDATQRLPVA ITHWRPHSSH CQRNVA AAKV  
HSTEGVAREA AANINNDWRV GLDVNPRPEA NMRASVAGSH SKVANFAAEK  
TYQDQYNFNS DTVECRMYSF RLVQKPPLHL DFKKALRALP RNFNSSTEHA YHRLISSYGT  
HFITAVDLGG RISVLTALRT CQLTLNGLTA DEVGDCLNVE AQVSIG AQAS VSSEYKACEE  
KKKQHKMATS FHQTYRERHV EVLGGPLDST HDLLFGNQAT PEQFSTWTAS LPSNPG LVDY  
SLEPLHTLLE EQNPK

**[ ANTIBODY SPECIFICITY ]**

The antibody is a rabbit polyclonal antibody raised against PRF1. It has been

selected for its ability to recognize PRF1 in immunohistochemical staining and western blotting.

## [ APPLICATIONS ]

Western blotting: 1:50-400

Immunocytochemistry in formalin fixed cells: 1:50-500

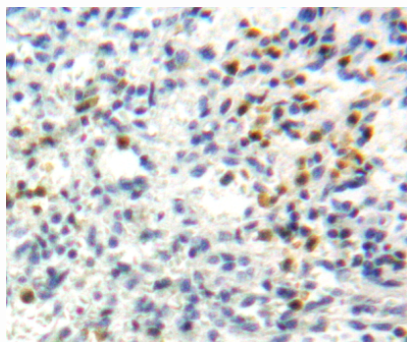
Immunohistochemistry in formalin fixed frozen section: 1:50-500

Immunohistochemistry in paraffin section: 1:10-100

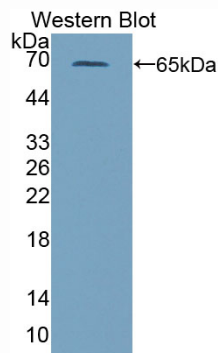
Enzyme-linked Immunosorbent Assay: 1:100-200

Optimal working dilutions must be determined by end user.

## [ IMAGES ]



Used in DAB staining on formalin fixed paraffin-embedded spleen tissue



Used in Western Blot, Sample: Recombinant DKK2, Human

## [ CONTENTS ]

**Form & Buffer:** Supplied as solution form in PBS, pH7.4, containing 0.02%  $\text{NaN}_3$ , 50% glycerol.

## [ QUALITY CONTROL ]

**Content:** The quality control contains recombinant PRF1 (Val40~Lys355) disposed in loading buffer.

**Usage:** 10uL per well when 3,3'-Diaminobenzidine(DAB) as the substrate.  
5uL per well when used in enhanced chemiluminescent (ECL).

**Note:** The quality control is specifically manufactured as the positive control. Not used for other purposes.

**Loading Buffer:** 100mM Tris(pH8.8), 2% SDS, 200mM NaCl, 50% glycerol, BPB 0.01%,  $\text{NaN}_3$  0.02%.

**[ STORAGE ]**

Store at 4°C for frequent use. Stored at -20°C to -80°C in a manual defrost freezer for one year without detectable loss of activity. Avoid repeated freeze-thaw cycles.