

A91987Hu01
Polyclonal Antibody to Protein Kinase N2 (PKN2)
Instruction manual

FOR IN VITRO USE AND RESEARCH USE ONLY
NOT FOR USE IN CLINICAL DIAGNOSTIC PROCEDURES

5th Edition (Revised in January, 2013)

[PRODUCT INFORMATION]

Immunogen: PKN2

Clonality: Polyclonal

Host: Rabbit

Species Reactivity: Human

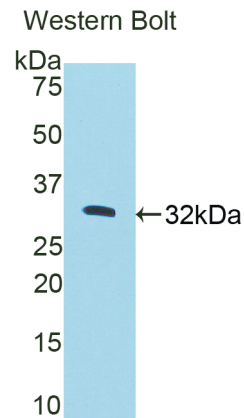
Ig type: Rabbit IgG

Purification: Antibodies are purified by target protein affinity chromatography.

Applications: WB, ICC, IHC-P, IHC-F

Form: Liquid

Size: 100µg



Sample: Recombinant human PKN2

[IMMUNOGEN INFORMATION]




Immunogen: Recombinant human PKN2 (Glu67~Ile312) expressed in *E. coli*.

Molecular Weight: 29.5kDa

USCN accession No.: P91987Hu01

Sequence: The target protein is fused with N-terminal His-Tag and its sequence is listed below.

MGHHHHHSGSEF-ENLR KVTDDKSLA YVDNLIKSN KKLEELHKL QELNAHIVVS
DPEDITDCPR TPDTPNNDPR CSTSNRLKA LQQLDIELK VKQGAENMIQ MYSNGSSKDR
KLHGTAQQLL QDSKTKEIVI RMQILQAVQT NELAFDNAKP VISPLELRME ELRHHFRIEF

Unique product Superb quality Client favorite Nicest service  ISO9001:2008 ;  ISO13485:2003 ; 

AVAEGAKNVM KLLGSGKVTD RKALSEAQAR FNESSQKLDL LKYSLEQRLN EVPKNHPKSR
IIIEELSLVAASPTLSPRQS MI

[ANTIBODY SPECIFICITY]

Anti PKN2 is a rabbit polyclonal antibody raised against human PKN2. This antibody has been selected for its ability to recognize human PKN2 in immunohistochemical staining and western blotting, non cross-reactive with other members of the family.

[APPLICATIONS]

Western blotting: 1:100-400

Immunocytochemistry in formalin fixed cells: 1:100-500

Immunohistochemistry in formalin fixed frozen section: 1:100-500

Immunohistochemistry in paraffin section: 1:50-200

Optimal working dilutions must be determined by end user.

[CONTENTS]

Form & Buffer: Supplied as solution form in PBS, pH 7.4, containing 0.02% Na₃N, 50% glycerol.

[QUALITY CONTROL]

Content: The quality control contains recombinant human PKN2 (Glu67~Ile312) disposed in loading buffer.

Usage: 10uL per well when 3,3'-Diaminobenzidine(DAB) as the substrate.

5uL per well when used in enhanced chemiluminescent (ECL).

Note: The quality control is specifically manufactured as the positive control. Not used for other purposes.

Loading buffer: 100mM Tris(PH 8.8), 2%SDS, 200mM NaCl, 50% glycerol, BPB 0.01%, Na₃N 0.02%.

[STORAGE]

Store at 4°C for frequent use. Stored at -20°C to -80°C in a manual defrost freezer for one year without detectable loss of activity. Avoid repeated freeze-thaw cycles.