

EPA079Mu61 100ug

Eukaryotic Interleukin 6 (IL6)

Organism Species: Mus musculus (Mouse)

Instruction manual

FOR IN VITRO USE AND RESEARCH USE ONLY

NOT FOR USE IN CLINICAL DIAGNOSTIC PROCEDURES

11th Edition (Revised in May, 2016)

[PROPERTIES]

Source: Eukaryotic expression.

Host: 293F cell

Residues: Phe25~Thr211

Tags: N-terminal His Tag

Homology: Human 41%, Rat 85%

Tissue Specificity: Spleen.

Subcellular Location: Secreted.

Purity: >95%

Endotoxin Level: <1.0EU per 1µg (determined by the LAL method).

Traits: Freeze-dried powder

Buffer Formulation: 20mM Tris, 150mM NaCl, pH8.0, containing 1mM EDTA, 1mM DTT, 5%Trehalose and Proclin300.

Original Concentration: 200ug/mL

Predicted isoelectric point: 6.5

Predicted Molecular Mass: 23.3kDa

Accurate Molecular Mass: 26-33kDa as determined by SDS-PAGE reducing conditions.

Applications: SDS-PAGE; WB; ELISA; IP; CoIP; EMSA; Reporter Assays; Purification; Amine Reactive Labeling.

(May be suitable for use in other assays to be determined by the end user.)

Phenomenon explanation:

The possible reasons that the actual band size differs from the predicted are as follows:

1. Splice variants: Alternative splicing may create different sized proteins from the same gene.
2. Relative charge: The composition of amino acids may affect the charge of the protein.
3. Post-translational modification: Phosphorylation, glycosylation, methylation etc.
4. Post-translation cleavage: Many proteins are synthesized as pro-proteins, and then cleaved to give the active form.
5. Polymerization of the target protein: Dimerization, multimerization etc.

[USAGE]

Reconstitute in 20mM Tris, 150mM NaCl (pH8.0) to a concentration of 0.1-1.0 mg/mL. Do not vortex

[STORAGE AND STABILITY]

Storage: Avoid repeated freeze/thaw cycles.

Store at 2-8°C for one month.

Aliquot and store at -80°C for 12 months.

Stability Test: The thermal stability is described by the loss rate. The loss rate was determined by accelerated thermal degradation test, that is, incubate the protein at 37°C for 48h, and no obvious degradation and precipitation were observed. The loss rate is less than 5% within the expiration date under appropriate storage condition.

[SEQUENCE]

```
FPTSQV RRGDFTEDTT PNRPVYTTSQ
VGGLITHVLW EIVEMRKELC NGNSDCMNNND DALAENNLKL PEIQRNDGCV
QTGYNQEICL LKISSGLLEY HSYLEYMKNN LKDNKKDKAR VLQRDTETLI
HIFNQEVDL HKIVLPTPIS NALLTDKLES QKEWLRTKI QFILKSLEEF
LKVTLRSTRQ T
```

[IDENTIFICATION]

TTCCCTCTTCACAGTCCGGAGAGGACTTCACAGAGGATCCACCTCCACAGACTGCTCTATCCACCTTCACAGTCCGGAGGCTTAAATTACACTGTTCTCTGGGAAATCGTGGAAATGAGAAAGAGTGTGCAAATGGCAATTCGTATGTATGACAGAGATGATGCCTTCGAGAAACATCTG
F P T S Q V R R C D P T E D T T P N R P V Y T T S O V G L I T H V L V E I V E H R K E L C N G N S D C H N N D D A L A E N H I I

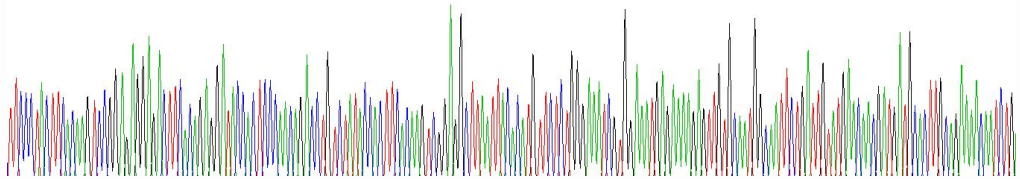


Figure 1. Gene Sequencing (extract)

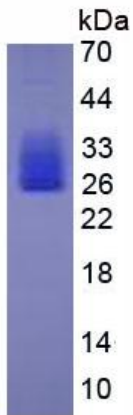


Figure 2. SDS-PAGE