

MAG369Hu21

Monoclonal Antibody to ATPase, Na⁺/K⁺ Transporting Alpha 1 Polypeptide (ATP1a1)

Organism Species: *Homo sapiens (Human)*

Instruction manual

FOR RESEARCH USE ONLY

NOT FOR USE IN CLINICAL DIAGNOSTIC PROCEDURES

13th Edition (Revised in Aug, 2023)

[PROPERTIES]

Source: Monoclonal antibody preparation

Host: Mouse

Antibody isotype: IgG2b Kappa

Purification: Protein A + Protein G affinity chromatography

Clone number: C206

Traits: Liquid

Concentration: 1mg/ml

UOM: 100ul

Cross Reactivity: Mouse; Rat; Rabbit; Porcine; Bovine.

Applications: WB; IHC.

[IMMUNOGEN]

Immunogen: Recombinant ATP1a1 (His493~Ala660) expressed in *E.coli*

Accession No.: RPG369Hu01

[APPLICATIONS]

Western blotting: 0.01-5µg/mL;

Immunohistochemistry: 5-20µg/mL;

Optimal working dilutions must be determined by end user.

[FORMULATION]

Form & Buffer: Supplied as solution form in 0.01M PBS, pH7.4, containing 0.05% Proclin-300, 50% glycerol.

[STORAGE AND STABILITY]

Storage: Avoid repeated freeze/thaw cycles.

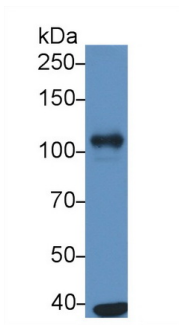
Store at 4°C for frequent use.

Aliquot and store at -20°C for 24 months.

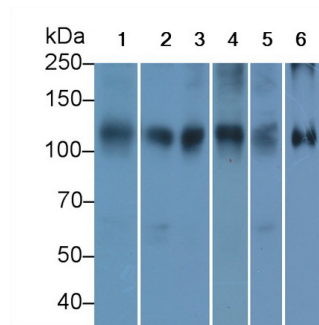
Stability Test: The thermal stability is described by the loss rate. The loss rate was determined by accelerated thermal degradation test, that is, incubate the protein at 37°C for 48h, and no

obvious degradation and precipitation were observed. The loss rate is less than 5% within the expiration date under appropriate storage condition.

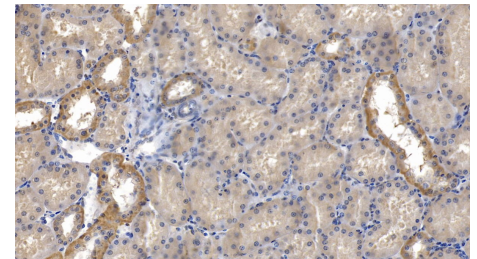
[IDENTIFICATION]



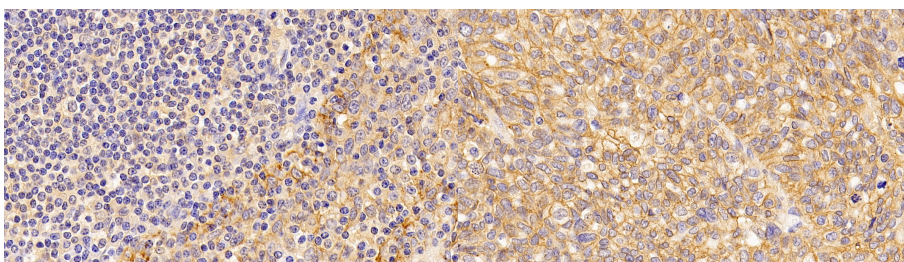
Western Blot; Sample: Human A549 cell lysate;
 Primary Ab: 5µg/ml Mouse Anti-Human ATP1a1 Antibody
 Second Ab: 0.2µg/mL HRP-Linked Caprine Anti-Mouse IgG Polyclonal Antibody
 (Catalog: SAA544Mu19)



Western Blot; Sample: Lane1: Mouse Heart lysate; Lane2: Porcine Heart lysate; Lane3: Rat Heart lysate; Lane4: Bovine Heart lysate; Lane5: Rabbit Heart lysate; Lane6: Porcine Cerebrum lysate
 Primary Ab: 2?g/ml Mouse Anti-Human ATP1a1 Antibody
 Second Ab: 0.2µg/mL HRP-Linked Rabbit Anti-Mouse IgG Polyclonal Antibody
 (Catalog: SAA544Mu19)



DAB staining on IHC-P;
 Samples: Human Kidney Tissue;
 Primary Ab: 20µg/ml Mouse Anti-Human ATP1a1 Antibody
 Second Ab: 2µg/mL HRP-Linked Caprine Anti-Mouse IgG Polyclonal Antibody
 (Catalog: SAA544Mu19)



DAB staining on IHC-P;
 Samples: Human amygdalitis Tissue;
 Primary Ab: 10?g/ml Mouse Anti-Human ATP1a1 Antibody
 Second Ab: 2µg/mL HRP-Linked Caprine Anti-Mouse IgG Polyclonal Antibody

DAB staining on IHC-P;
 Samples: Human Ovarian cancer Tissue;
 Primary Ab: 10?g/ml Mouse Anti-Human ATP1a1 Antibody
 Second Ab: 2µg/mL HRP-Linked Caprine Anti-Mouse IgG Polyclonal

(Catalog: SAA544Mu19)

Antibody

(Catalog: SAA544Mu19)

[IMPORTANT NOTE]

The kit is designed for research use only, we will not be responsible for any issue if the kit was used in clinical diagnostic or any other procedures.