

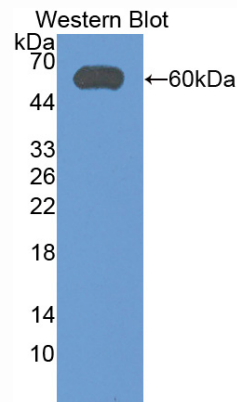
**MAE837Hu21**  
**Monoclonal Antibody**  
**To Aldehyde Dehydrogenase 7 Family, Member A1 (ALDH7A1)**  
**Organism Species: Homo sapiens (Human)**  
**Instruction manual**

FOR IN VITRO USE AND RESEARCH USE ONLY  
NOT FOR USE IN CLINICAL DIAGNOSTIC PROCEDURES

9th Edition (Revised in Jul, 2013)

**[ PRODUCT INFORMATION ]**

**Immunogen:** ALDH7A1, Human  
**Clonality:** Monoclonal  
**Clone number:** G1  
**Host:** Mouse  
**Immunoglobulin Type:** IgG  
**Purification:** Affinity Chromatography.  
**Applications:** WB, ICC, IHC-P, IHC-F, ELISA  
**Concentration:** 500µg/mL  
**UOM:** 200µg



Sample: Recombinant ALDH7A1, Human

**[ IMMUNOGEN INFORMATION ]**

**Immunogen:** Recombinant ALDH7A1 (Met1~Gln539) expressed in *E.coli*.  
**Accession No.:** RPE837Hu01  
**Sequence:** The target protein is fused with N-terminal His-Tag and its sequence is listed below.

MGHHHHHHSGS-MWRLPRALCV HAAKTSKLSG PWSRPAAFMS TLLINQPQYA  
WLKELGLREE NEGVYNGSWG GRGEVITTYC PANNEPIARV RQASVADYEE  
TVKKAREAWK IWADIPAPKR GEIVRQIGDA LREKIQVLGS LVSLEMGKIL VEGVGEVQEY  
VDICDYAVGL SRMIGGPILP SERSGHALIE QWNPVGLVGI ITAFNFPVAV YGWNNAIAMI  
CGNVCLWKGA PTTSLISVAV TKIIAKVLED NKLPGAICSL TCGGADIGTA MAKDERVNLL  
SFTGSTQVGK QVGLMVQERF GRSLLLELGGN NAIIFEDAD LSLVVPSELF AAVGTAGQRC  
TTARRLFIHE SIHDEVVNRL KKAYAQIRVG NPWDPNVLYG PLHTKQAVSM FLGAVEEAKK

EGGTVVYGGK VMDRPGNYVE PTIVTGLGHD ASIAHTETFA PILYVFKFKN EEEVFAWNNE  
VKQGLSSSIF TKDLGRIFRW LGPKGSDCGI VNVNIPTSGA EIGGAFGGEK HTGGGRESGS  
DAWKQYMRRS TCTINYSKDL PLAQGIKFQ

## **[ ANTIBODY SPECIFICITY ]**

The antibody is a mouse monoclonal antibody raised against ALDH7A1. It has been selected for its ability to recognize ALDH7A1 in immunohistochemical staining and western blotting.

## **[ APPLICATIONS ]**

Western blotting: 1:100-400

Immunocytochemistry in formalin fixed cells: 1:100-500

Immunohistochemistry in formalin fixed frozen section: 1:100-500

Immunohistochemistry in paraffin section: 1:50-200

Enzyme-linked Immunosorbent Assay: 1:100-200

Optimal working dilutions must be determined by end user.

## **[ CONTENTS ]**

**Form & Buffer:** Supplied as solution form in PBS, pH7.4, containing 0.02% NaN<sub>3</sub>, 50% glycerol.

## **[ STORAGE ]**

Store at 4°C for frequent use. Stored at -20°C to -80°C in a manual defrost freezer for one year without detectable loss of activity. Avoid repeated freeze-thaw cycles.