

**MAA153Hu21**

**Monoclonal Antibody to Alpha-Fetoprotein (AFP)**

**Organism Species: *Homo sapiens (Human)***

***Instruction manual***

FOR RESEARCH USE ONLY

NOT FOR USE IN CLINICAL DIAGNOSTIC PROCEDURES

---

12th Edition (Revised in Aug, 2016)

**[ PROPERTIES ]**

**Source:** Monoclonal antibody preparation

**Host:** Mouse

**Antibody isotype:** IgG1 Kappa

**Purification:** Protein A + Protein G affinity chromatography

**Clone number:** C6

**Traits:** Liquid

**Concentration:** 1mg/ml

**UOM:** 200µl

**Cross Reactivity:** Simian

**Applications:** WB; IHC; ICC; IP.

**[ IMMUNOGEN ]**

**Immunogen:** Recombinant AFP (Ile31~Pro171) expressed in *E.coli*

**Accession No.:** RPA153Hu01

**[ APPLICATIONS ]**

Western blotting: 0.5-6µg/mL;

Immunohistochemistry: 5-60µg/mL;

Immunocytochemistry: 5-60µg/mL;

Optimal working dilutions must be determined by end user.

**[ FORMULATION ]**

**Form & Buffer:** Supplied as solution form in 0.01M PBS, pH7.4, containing 0.05% Proclin-300, 50% glycerol.

**[ STORAGE AND STABILITY ]**

**Storage:** Avoid repeated freeze/thaw cycles.

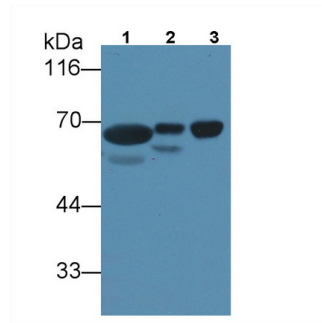
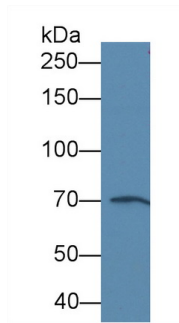
Store at 4°C for frequent use.

Aliquot and store at -20°C for 12 months.

**Stability Test:** The thermal stability is described by the loss rate. The loss rate was determined

by accelerated thermal degradation test, that is, incubate the protein at 37°C for 48h, and no obvious degradation and precipitation were observed. The loss rate is less than 5% within the expiration date under appropriate storage condition.

**[ IDENTIFICATION ]**



<p>Western Blot; Sample: Simian Serum          Primary Ab: 6µg/ml Mouse Anti-Human          aFP Antibody Second Ab: 0.2µg/mL          HRP-Linked Caprine Anti-Mouse IgG          Polyclonal Antibody (Catalog:          SAA544Mu19)</p>	<p>Western Blot; Sample: Lane1: Human          Serum; Lane2: Human Liver lysate;          Lane3: Human Lung lysate          Primary Ab: 3µg/ml Mouse Anti-Human          aFP Antibody          Second Ab: 0.2µg/mL HRP-Linked          Caprine Anti-Mouse IgG Polyclonal          Antibody          (Catalog: SAA544Mu19)</p>
-------------------------------------------------------------------------------------------------------------------------------------------------------------------------------------------------------------------------------------------------------------	---------------------------------------------------------------------------------------------------------------------------------------------------------------------------------------------------------------------------------------------------------------------------------------------------------------------------------------------------------------

**[ IMPORTANT NOTE ]**

The kit is designed for research use only, we will not be responsible for any issue if the kit was used in clinical diagnostic or any other procedures.