

**MAA006Hu24**

**Monoclonal Antibody to Amphiregulin (AREG)**

**Organism Species: *Homo sapiens (Human)***

***Instruction manual***

**FOR RESEARCH USE ONLY**

**NOT FOR USE IN CLINICAL DIAGNOSTIC PROCEDURES**

---

13th Edition (Revised in Aug, 2023)

### **[ PROPERTIES ]**

**Source:** Monoclonal antibody preparation

**Host:** Mouse

**Antibody isotype:** Ig2b Kappa

**Purification:** Protein A + Protein G affinity chromatography

**Clone number:** A3

**Traits:** Liquid

**Concentration:** 1mg/ml

**UOM:** 100ul

**Cross Reactivity:** Rat.

**Applications:** WB,IHC,ICC/IF

### **[ IMMUNOGEN ]**

**Immunogen:** Recombinant AREG (Ser20~Asp100) expressed in *E.coli*

**Accession No.:** RPA006Hu01

### **[ APPLICATIONS ]**

Western blotting: 0.5-3µg/mL?

Immunohistochemistry: 5-30µg/mL?

Immunocytochemistry: 5-20µg/mL?

Optimal working dilutions must be determined by end user.

### **[ FORMULATION ]**

**Form & Buffer:** Supplied as solution form in 0.01M PBS, pH7.4, containing 0.05% Proclin-300, 50% glycerol.

### **[ STORAGE AND STABILITY ]**

**Storage:** Avoid repeated freeze/thaw cycles.

Store at 4°C for frequent use.

Aliquot and store at -20°C for 24 months.

**Stability Test:** The thermal stability is described by the loss rate. The loss rate was determined

by accelerated thermal degradation test, that is, incubate the protein at 37°C for 48h, and no obvious degradation and precipitation were observed. The loss rate is less than 5% within the expiration date under appropriate storage condition.

## [ IDENTIFICATION ]

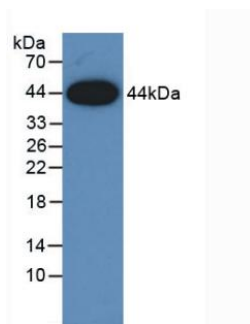
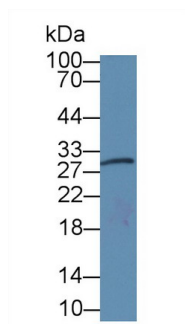
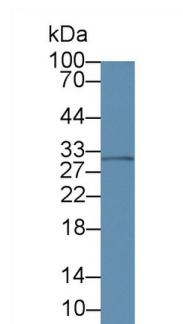


Figure. Western Blot; Sample: Recombinant AREG, Human.

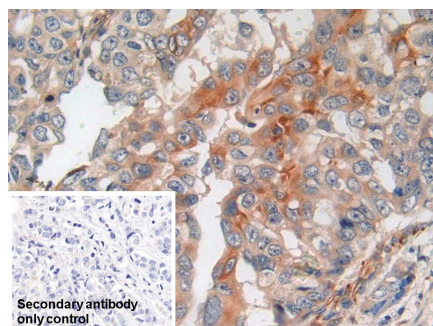


Western Blot; Sample: Rat Placenta lysate;

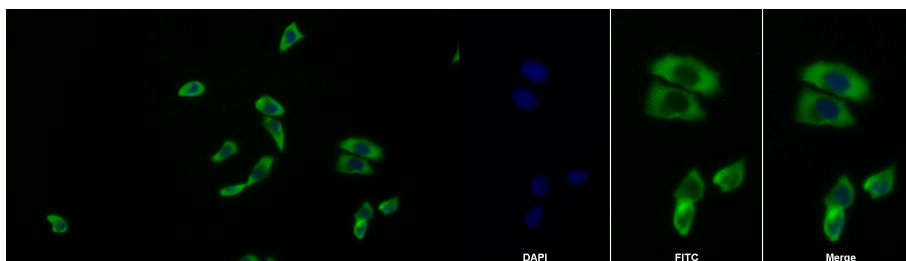


Western Blot; Sample: Human MCF7 cell lysate;

Primary Ab: 3µg/ml Mouse Anti-Human AREG Antibody  
Second Ab: 0.2µg/mL HRP-Linked Caprine Anti-Mouse IgG Polyclonal Antibody  
(Catalog: SAA544Mu19)



DAB staining on IHC-P;  
Sample: Human Breast cancer Tissue  
Primary Ab: 30µg/ml Mouse Anti-Human AREG Antibody  
Control: Used PBS instead of primary antibody  
Secondary Ab: 2µg/ml HRP-Linked Caprine Anti-Mouse IgG Polyclonal



FITC staining on IF;  
Samples: Human MCF7 cell;  
Primary Ab: 20µg/ml Mouse Anti-Human AREG Antibody  
Second Ab: 0.75µg/ml FITC-Linked Caprine Anti-Mouse IgG Polyclonal Antibody  
(Catalog: SAA544Mu18)

FITC staining on IF;  
Sample: MCF7 cell  
Primary Ab: 20µg/ml Mouse Anti-Human AREG Antibody  
Second Ab: 2µg/ml FITC-Linked Caprine Anti-Mouse IgG Polyclonal Antibody  
(Catalog: SAA544Mu11)

Antibody

(Catalog: SAA544Mu19)

**[ IMPORTANT NOTE ]**

The kit is designed for research use only, we will not be responsible for any issue if the kit was used in clinical diagnostic or any other procedures.