

**MAB062Ra22**

**Monoclonal Antibody to Heat Shock 70kDa Protein 1 Like Protein (HSPA1L)**

**Organism Species: Rattus norvegicus (Rat)**

**Instruction manual**

FOR IN VITRO USE AND RESEARCH USE ONLY

NOT FOR USE IN CLINICAL DIAGNOSTIC PROCEDURES

9th Edition (Revised in Jul, 2013)

## [ **PRODUCT INFORMATION** ]

**Immunogen:** HSPA1L, Rat

**Clonality:** Monoclonal

**Clone number:** C4

**Host:** Mouse

**Immunoglobulin Type:** IgG

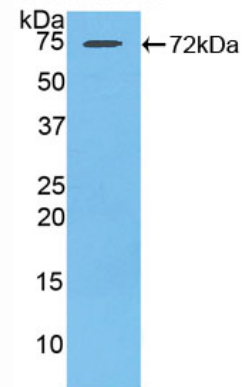
**Purification:** Affinity Chromatography.

**Applications:** WB, ICC, IHC-P, IHC-F, ELISA

**Concentration:** 500µg/mL

**UOM:** 200µg

Western Blot



Sample: Recombinant HSPA1L, Rat

## [ **IMMUNOGEN INFORMATION** ]

**Immunogen:** Recombinant HSPA1L (Met1~Asp641) expressed in *E.coli*.

**Accession No.:** RPB062Ra01

**Sequence:** The target protein is fused with N-terminal His-Tag and its sequence is listed below.

MGHHHHHHSGSEF-MAANKGMAIG IDLGTTYSCV GVFQHGKVEI IANDQGNRTT  
PSYVAFTDTE RLIGDAAKNQ VAMNPQNTVF DAKRLIGRKF NDPVVQSDMK LWPFQVINEA  
GKPKVLVSYK GEKKAFYP EEISSMVLTKMK ETAEAF LGHS VTN AVITVPA YFNDSQRQAT  
KDAGVIAGLN VLR IINEPTA AAIAYGLDKG SHGERHVLIF DLGGGTFDVS ILTIDDGIFE  
VKATAGDTHL GGEDFDNRLV SHFVEEFKRK HKKDISQNKR AVRRLRTACE RAKRTLSSST  
QANLEIDSLY EGIDFYTSIT RARFEELCAD LFRGTLPEVE KSLRDAKMDK AKIH DIVLVG  
GSTRI PKVQK LLQDYFN GRD LNKSINPDEA VAYGAAVQAA ILMGDKSEKV QDLLLLDVP  
LSLGLETAGG VMTVLIKRNS TIPTKQTQIF TTYS DNQPGV LIQVYEGERA MTRDNLLGR

FDLTGIPPAP RGVPQIEVTF DIDANGILNV TAMDKSTGKA NKITITNDKG RLSKEEIERM  
VQEAERYKAE DEGQREKIAA KNALESYAFN MKSAVGDEGL KDKISEDDK KILDKCSEVL  
SWLEANQLAE KEEFDHHRKE LENMCNPIIT KLYQSGCTGP TCAPGYTPGR AATGPTIEEV  
D

## **[ ANTIBODY SPECIFICITY ]**

The antibody is a mouse monoclonal antibody raised against HSPA1L. It has been selected for its ability to recognize HSPA1L in immunohistochemical staining and western blotting.

## **[ APPLICATIONS ]**

Western blotting: 1:100-400

Immunocytochemistry in formalin fixed cells: 1:100-500

Immunohistochemistry in formalin fixed frozen section: 1:100-500

Immunohistochemistry in paraffin section: 1:50-200

Enzyme-linked Immunosorbent Assay: 1:100-200

Optimal working dilutions must be determined by end user.

## **[ CONTENTS ]**

**Form & Buffer:** Supplied as solution form in PBS, pH7.4, containing 0.02% NaN<sub>3</sub>, 50% glycerol.

## **[ STORAGE ]**

Store at 4°C for frequent use. Stored at -20°C to -80°C in a manual defrost freezer for one year without detectable loss of activity. Avoid repeated freeze-thaw cycles.