

**MAB081Hu21**

**Monoclonal Antibody to Heat Shock 70kDa Protein 1A (HSPA1A)**

**Organism Species: *Homo sapiens (Human)***

***Instruction manual***

FOR RESEARCH USE ONLY

NOT FOR USE IN CLINICAL DIAGNOSTIC PROCEDURES

---

13th Edition (Revised in Aug, 2023)

**[ PROPERTIES ]**

**Source:** Monoclonal antibody preparation

**Host:** Mouse

**Antibody isotype:** IgG2b Kappa

**Purification:** Protein A + Protein G affinity chromatography

**Clone number:** 2#

**Traits:** Liquid

**Concentration:** 1mg/ml

**UOM:** 100ul

**Cross Reactivity:** Mouse; Rat; Cavia; Canine; Bovine; Gallus.

**Applications:** WB,IHC,IF.

**[ IMMUNOGEN ]**

**Immunogen:** Recombinant HSPA1A (Met1~Asp641) expressed in *E.coli*

**Accession No.:** RPB081Hu01

**[ APPLICATIONS ]**

Western blotting: 0.01-3µg/mL;

Immunohistochemistry: 5-20µg/mL;

Immunofluorescence:5-20µg/mL;

Optimal working dilutions must be determined by end user.

**[ FORMULATION ]**

**Form & Buffer:** Supplied as solution form in 0.01M PBS, pH7.4, containing 0.05% Proclin-300, 50% glycerol.

**[ STORAGE AND STABILITY ]**

**Storage:** Avoid repeated freeze/thaw cycles.

Store at 4°C for frequent use.

Aliquot and store at -20°C for 24 months.

**Stability Test:** The thermal stability is described by the loss rate. The loss rate was determined

by accelerated thermal degradation test, that is, incubate the protein at 37°C for 48h, and no obvious degradation and precipitation were observed. The loss rate is less than 5% within the expiration date under appropriate storage condition.

**[ IDENTIFICATION ]**

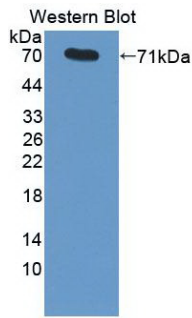
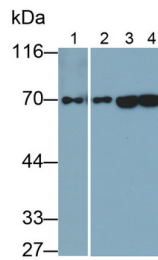


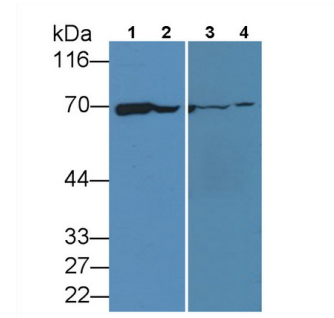
Figure. Western Blot; Sample: Recombinant HSPA1A, Human.



Western Blot; Sample: Lane1: Bovine Liver lysate; Lane2: Bovine Cerebrum lysate; Lane3: HepG2 cell lysate; Lane4: HeLa cell lysate

Primary Ab: 0.2µg/ml Mouse Anti-Human HSPA1A Antibody  
 Second Ab: 0.2µg/mL HRP-Linked Caprine Anti-Mouse IgG Polyclonal Antibody

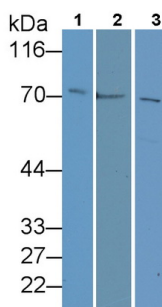
(Catalog: SAA544Mu19)



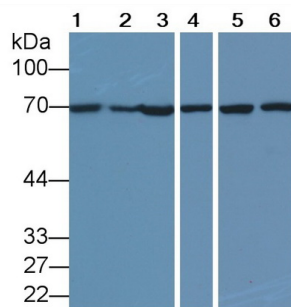
Western Blot; Sample: Lane1: HeLa cell lysate; Lane2: Jurkat cell lysate; Lane3: HepG2 cell lysate; Lane4: Rat Cerebrum lysate

Primary Ab: 3µg/ml Mouse Anti-Human HSPA1A Antibody  
 Second Ab: 0.2µg/mL HRP-Linked Caprine Anti-Mouse IgG Polyclonal Antibody

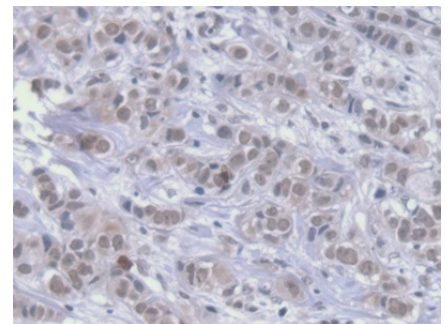
(Catalog: SAA544Mu19)



Western Blot; Sample: Lane1: Mouse Liver lysate; Lane2: Rat Liver lysate; Lane3: Canine Liver lysate  
 Primary Ab: 1?g/ml Mouse Anti-Human HSPA1A Antibody  
 Second Ab: 0.2µg/mL HRP-Linked



Western Blot; Sample: Lane1: Mouse Cerebrum lysate; Lane2: Cavia Liver lysate; Lane3: Cavia Cerebrum lysate; Lane4: Canine Cerebrum lysate; Lane5: Bovine Liver lysate; Lane6: Bovine Cerebrum lysate

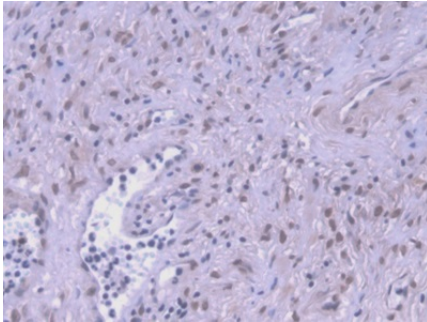


DAB staining on IHC-P;  
 Samples: Human Breast cancer Tissue;  
 Primary Ab: 20µg/ml Mouse Anti-Human HSPA1A Antibody  
 Second Ab: 2µg/mL HRP-Linked Caprine Anti-Mouse IgG Polyclonal

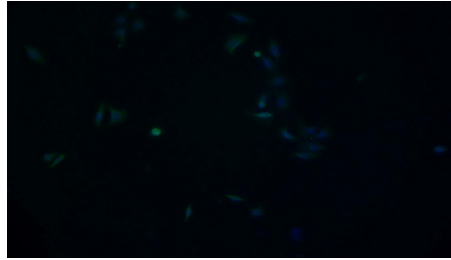
Caprine Anti-Mouse IgG Polyclonal  
Antibody  
(Catalog: SAA544Mu19)

Primary Ab: 1?g/ml Mouse Anti-Human  
HSPA1A Antibody  
Second Ab: 0.2µg/mL HRP-Linked  
Rabbit Anti-Mouse IgG Polyclonal  
Antibody  
(Catalog: SAA544Mu19)

Antibody  
(Catalog: SAA544Mu19)



DAB staining on IHC-P;  
Samples: Human Prostate Tissue;  
Primary Ab: 20µg/ml Mouse Anti-  
Human HSPA1A Antibody  
Second Ab: 2µg/mL HRP-Linked  
Caprine Anti-Mouse IgG Polyclonal  
Antibody  
(Catalog: SAA544Mu19)



FITC staining on IF;  
Samples: Human HepG2 cell;  
Primary Ab: 20?g/ml Mouse Anti-  
Human HSPA1A Antibody  
Second Ab: 1?g/ml FITC-Linked  
Caprine Anti-Mouse IgG Polyclonal  
Antibody  
(Catalog: SAA544Mu18)

**[ IMPORTANT NOTE ]**

The kit is designed for research use only, we will not be responsible for any issue if the kit was used in clinical diagnostic or any other procedures.