

MAA050Hu22

Monoclonal Antibody to Insulin Like Growth Factor 1 (IGF1)

Organism Species: *Homo sapiens (Human)*

Instruction manual

FOR RESEARCH USE ONLY

NOT FOR USE IN CLINICAL DIAGNOSTIC PROCEDURES

13th Edition (Revised in Aug, 2023)

[PROPERTIES]

Source: Monoclonal antibody preparation

Host: Mouse

Antibody isotype: IgG2b Kappa

Purification: Protein A + Protein G affinity chromatography

Clone number: C1

Traits: Liquid

Concentration: 1mg/ml

UOM: 100µl

Cross Reactivity: Mouse;Rat;Porcine

Applications: WB,ICC/IF

[IMMUNOGEN]

Immunogen: Recombinant IGF1 (Gly49~Ala118) expressed in *E.coli*

Accession No.: RPA050Hu01

[APPLICATIONS]

Western blotting: 0.01-2µg/mL;

Immunofluorescence:5-30µg/mL;

Optimal working dilutions must be determined by end user.

[FORMULATION]

Form & Buffer: Supplied as solution form in 0.01M PBS, pH7.4, containing 0.05% Proclin-300, 50% glycerol.

[STORAGE AND STABILITY]

Storage: Avoid repeated freeze/thaw cycles.

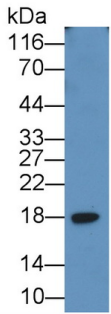
Store at 4°C for frequent use.

Aliquot and store at -20°C for 24 months.

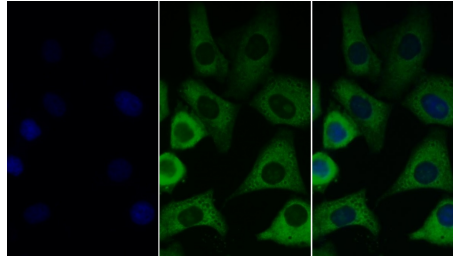
Stability Test: The thermal stability is described by the loss rate. The loss rate was determined by accelerated thermal degradation test, that is, incubate the protein at 37°C for 48h, and no

obvious degradation and precipitation were observed. The loss rate is less than 5% within the expiration date under appropriate storage condition.

[IDENTIFICATION]



Western Blot; Sample: Porcine Heart lysate
Primary Ab: 0.2µg/ml Mouse Anti-Human IGF1 Antibody
Second Ab: 0.2µg/mL HRP-Linked Caprine Anti-Mouse IgG Polyclonal Antibody
(Catalog: SAA544Mu19)



FITC staining on IF; Sample: Human

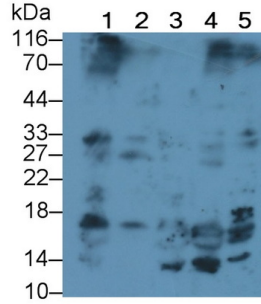
HeLa cell; Primary Ab: 30µg/ml Mouse Anti-Human IGF1 Antibody
Second Ab: 2µg/ml FITC-Linked Caprine Anti-Mouse IgG Polyclonal Antibody
(Catalog: SAA544Mu18)



Western Blot; Sample: Mouse Uterus lysate;
Primary Ab: 2µg/ml Mouse Anti-Human IGF1 Antibody
Second Ab: 0.2µg/mL HRP-Linked Caprine Anti-Mouse IgG Polyclonal Antibody
(Catalog: SAA544Mu19)



Western Blot; Sample: Mouse Testis lysate;
Primary Ab: 2µg/ml Mouse Anti-Human IGF1 Antibody
Second Ab: 0.2µg/mL HRP-Linked Caprine Anti-Mouse IgG Polyclonal Antibody
(Catalog: SAA544Mu19)



Western Blot; Sample: Lane1: Porcine Liver lysate; Lane2: Porcine Heart lysate; Lane3: Rat Uterus lysate; Lane4: Rat Testis lysate; Lane5: Rat Cerebrum lysate
Primary Ab: 2µg/ml Mouse Anti-Human IGF1 Antibody
Second Ab: 0.2µg/mL HRP-Linked Caprine Anti-Mouse IgG Polyclonal

Antibody
(Catalog: SAA544Mu19)

[IMPORTANT NOTE]

The kit is designed for research use only, we will not be responsible for any issue if the kit was used in clinical diagnostic or any other procedures.