

**PAA252Hu01**

**Polyclonal Antibody to Apolipoprotein C1 (APOC1)**

**Organism Species: *Homo sapiens (Human)***

***Instruction manual***

FOR RESEARCH USE ONLY

NOT FOR USE IN CLINICAL DIAGNOSTIC PROCEDURES

---

13th Edition (Revised in Aug, 2023)

### [ **PROPERTIES** ]

**Source:** Polyclonal antibody preparation

**Host:** Rabbit

**Purification:** Antigen-specific affinity chromatography followed by Protein A affinity chromatography

**Traits:** Liquid

**Concentration:** 0.5mg/ml

**UOM:** 100µl

**Cross Reactivity:** Mouse

**Applications:** WB; IHC; ICC/IF

### [ **IMMUNOGEN** ]

**Immunogen:** Recombinant APOC1 (Ser31~Ser83) expressed in *E.coli*

**Accession No.:** RPA252Hu01

### [ **APPLICATIONS** ]

Western blotting: 0.01-2µg/mL;

Immunohistochemistry: 5-20µg/mL;

Immunocytochemistry: 5-30µg/mL;

Optimal working dilutions must be determined by end user.

### [ **FORMULATION** ]

**Form & Buffer:** Supplied as solution form in 0.01M PBS, pH7.4, containing 0.05% Proclin-300, 50% glycerol.

### [ **STORAGE AND STABILITY** ]

**Storage:** Avoid repeated freeze/thaw cycles.

Store at 4°C for frequent use.

Aliquot and store at -20°C for 24 months.

**Stability Test:** The thermal stability is described by the loss rate. The loss rate was determined by accelerated thermal degradation test, that is, incubate the protein at 37°C for 48h, and no

obvious degradation and precipitation were observed. The loss rate is less than 5% within the expiration date under appropriate storage condition.

**[ IDENTIFICATION ]**

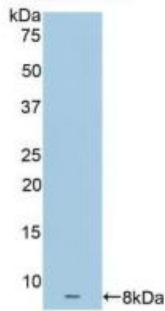
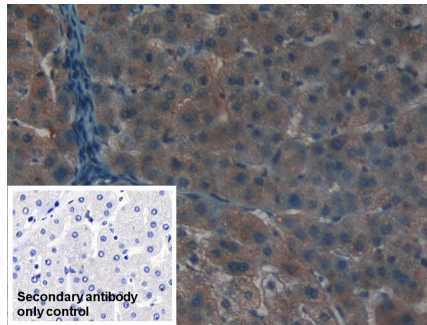
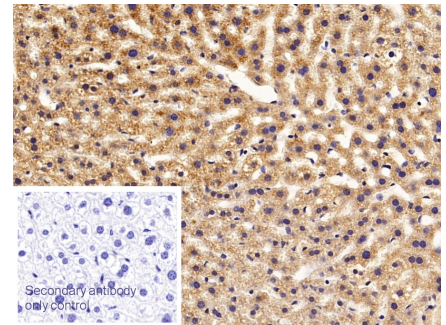


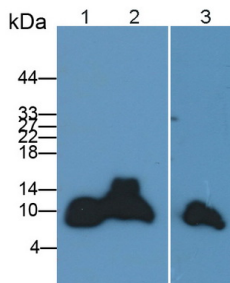
Figure. Western Blot; Sample: Recombinant APOC1, Human.



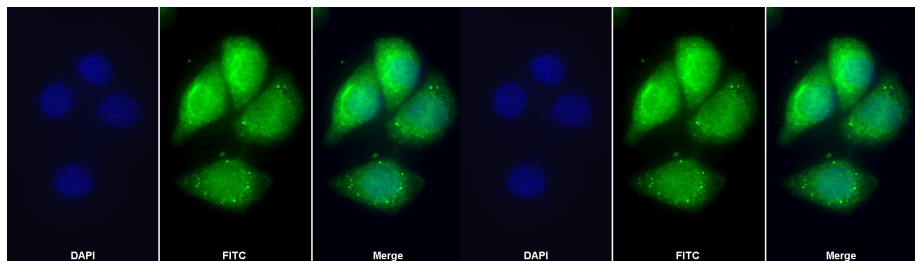
DAB staining on IHC-P; Sample: Human Liver Tissue; Primary Ab: 20µg/ml Rabbit Anti-Human APOC1 Antibody Second Ab: 2µg/mL HRP-Linked Caprine Anti-Rabbit IgG Polyclonal Antibody (Catalog: SAA544Rb19) Secondary antibody only control: Used PBS instead of primary antibody, Second Ab: 2µg/mL HRP-Linked



DAB staining on IHC-P; Sample: Mouse Liver Tissue; Primary Ab: 20µg/ml Rabbit Anti-Human APOC1 Antibody Second Ab: 2µg/mL HRP-Linked Caprine Anti-Rabbit IgG Polyclonal Antibody (Catalog: SAA544Rb19) Secondary antibody only control: Used PBS instead of primary antibody, Second Ab: 2µg/mL HRP-Linked Caprine Anti-Rabbit IgG Polyclonal Antibody (Catalog: SAA544Rb19)



Western Blot; Sample: Lane1: Human Serum; Lane2: Human Placenta lysate; Lane3: Mouse Liver lysate



FITC staining on IF; Sample: HeLa cell Primary Ab: 30µg/ml Rabbit Anti-Human APOC1 Antibody Second Ab: 2µg/ml FITC-Linked

FITC staining on IF; Sample: Human HeLa cell; Primary Ab: 30ug/ml Rabbit Anti-Human APOC1 Antibody Second Ab: 2µg/ml FITC-Linked

Primary Ab: 0.2µg/ml Rabbit Anti-  
Human APOC1 Antibody

Second Ab: 0.2µg/mL HRP-Linked  
Caprine Anti-Rabbit IgG Polyclonal  
Antibody

(Catalog: SAA544Rb19) Selected

Caprine Anti-Rabbit IgG Polyclonal  
Antibody

(Catalog: SAA544Rb11)

Caprine Anti-Rabbit IgG Polyclonal  
Antibody

(Catalog: SAA544Rb18)

**[ IMPORTANT NOTE ]**

The kit is designed for research use only, we will not be responsible for any issue if the kit was used in clinical diagnostic or any other procedures.