

PAA778Mu01

Polyclonal Antibody to B-Cell Leukemia/Lymphoma 2 (Bcl2)

Organism Species: *Mus musculus* (Mouse)

Instruction manual

FOR RESEARCH USE ONLY

NOT FOR USE IN CLINICAL DIAGNOSTIC PROCEDURES

13th Edition (Revised in Aug, 2023)

[**PROPERTIES**]

Source: Polyclonal antibody preparation

Host: Rabbit

Purification: Antigen-specific affinity chromatography followed by Protein A affinity chromatography

Traits: Liquid

Concentration: 0.5mg/ml

UOM: 100µl

Cross Reactivity: Human; Rat; Canine; Equine.

Applications: WB,IHC,ICC/IF

[**IMMUNOGEN**]

Immunogen: Recombinant Bcl2 (Ala2~Asp208) expressed in *E.coli*

Accession No.: RPA778Mu01

[**APPLICATIONS**]

Western blotting: 0.01-5µg/mL;

Immunohistochemistry: 5-20µg/mL;

Immunocytochemistry: 5-20µg/mL;

Optimal working dilutions must be determined by end user.

[**FORMULATION**]

Form & Buffer: Supplied as solution form in PBS, pH7.4, containing 0.02% NaN₃, 50% glycerol.

[**STORAGE AND STABILITY**]

Storage: Avoid repeated freeze/thaw cycles.

Store at 4°C for frequent use.

Aliquot and store at -20°C for 24 months.

Stability Test: The thermal stability is described by the loss rate. The loss rate was determined by accelerated thermal degradation test, that is, incubate the protein at 37°C for 48h, and no

obvious degradation and precipitation were observed. The loss rate is less than 5% within the expiration date under appropriate storage condition.

[IDENTIFICATION]

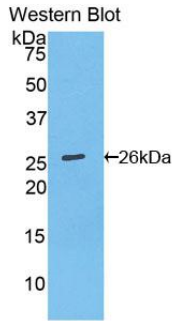
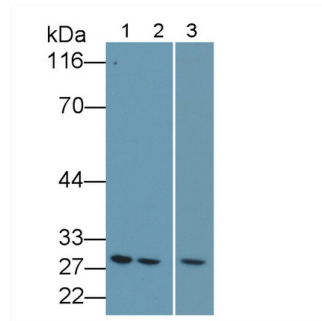
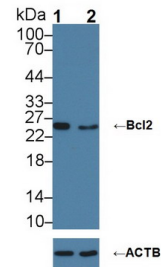


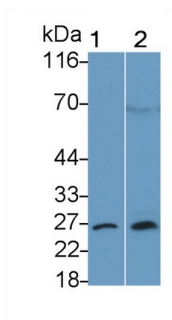
Figure. Western Blo; Sample: Recombinant Bcl2, Mouse.



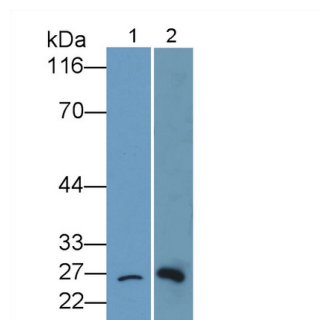
Western Blot; Sample: Lane1: Jurkat cell lysate; Lane2: U937 cell lysate; Lane3: Mouse Cerebrum lysate
Primary Ab: 4ug/ml Rabbit Anti-Mouse Bcl2 Antibody
Second Ab: 0.2µg/mL HRP-Linked Caprine Anti-Rabbit IgG Polyclonal Antibody
(Catalog: SAA544Rb19)



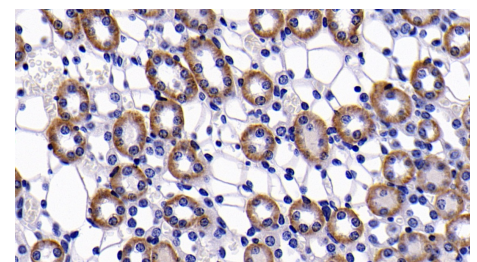
Knockout Varification:
Lane 1: Wild-type HL-60 cell lysate; Lane 2: Bcl2 knockout HL-60 cell lysate;
Predicted MW: 22,26kDa
Observed MW: 26kDa
Primary Ab: 5µg/ml Rabbit Anti-Mouse Bcl2 Antibody
Second Ab: 0.2µg/mL HRP-Linked Caprine Anti-Rabbit IgG Polyclonal Antibody
(Catalog: SAA544Rb19)



Western Blot; Sample: Lane1: Canine Cerebrum lysate; Lane2: Equine Spleen lysate
Primary Ab: 4?g/ml Rabbit Anti-Mouse Bcl2 Antibody



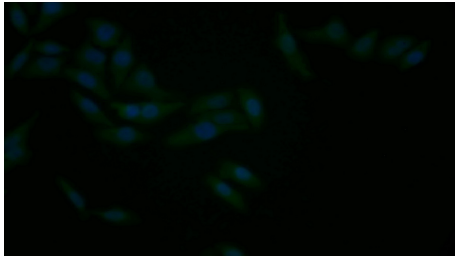
Western Blot; Sample: Lane1: Canine Cerebrum lysate; Lane2: Rat Cerebrum lysate
Primary Ab: 4ug/ml Rabbit Anti-Mouse Bcl2 Antibody



DAB staining on IHC-P; Samples: Mouse Kidney Tissue; Primary Ab: 20?g/ml Rabbit Anti-Mouse Bcl2 Antibody Second Ab: 2µg/mL HRP-Linked Caprine Anti-Rabbit IgG Polyclonal Antibody (Catalog: SAA544Rb19)

Second Ab: 0.2µg/mL HRP-Linked
Caprine Anti-Rabbit IgG Polyclonal
Antibody
(Catalog: SAA544Rb19)

Second Ab: 0.2µg/mL HRP-Linked
Caprine Anti-Rabbit IgG Polyclonal
Antibody
(Catalog: SAA544Rb19)



FITC staining on IF;

Samples: Human HepG2 cell;

Primary Ab: 20?g/ml Rabbit Anti-Mouse
Bcl2 Antibody

Second Ab: 1.5?g/ml FITC-Linked
Caprine Anti-Rabbit IgG Polyclonal
Antibody

(Catalog: SAA544Rb18)

[IMPORTANT NOTE]

The kit is designed for research use only, we will not be responsible for any issue if the kit was used in clinical diagnostic or any other procedures.