

PAA021Hu01

Polyclonal Antibody to Ciliary Neurotrophic Factor (CNTF)

Organism Species: *Homo sapiens* (Human)

Instruction manual

FOR RESEARCH USE ONLY

NOT FOR USE IN CLINICAL DIAGNOSTIC PROCEDURES

12th Edition (Revised in Aug, 2016)

[PROPERTIES]

Source: Polyclonal antibody preparation

Host: Rabbit

Purification: Antigen-specific affinity chromatography followed by Protein A affinity chromatography

Traits: Liquid

Concentration: 0.96mg/ml

UOM: 100µg(105µl)

Cross Reactivity: Porcine

Applications: WB; IHC; ICC; IP.

[IMMUNOGEN]

Immunogen: Recombinant CNTF (Ala2~Met200) expressed in *E.coli*

Accession No.: RPA021Hu01

[APPLICATIONS]

Western blotting: 0.5-2µg/mL;

Immunohistochemistry: 5-20µg/mL;

Immunocytochemistry: 5-20µg/mL;

Optimal working dilutions must be determined by end user.

[FORMULATION]

Form & Buffer: Supplied as solution form in 0.01M PBS, pH7.4, containing 0.05% Proclin-300, 50% glycerol.

[STORAGE AND STABILITY]

Storage: Avoid repeated freeze/thaw cycles.

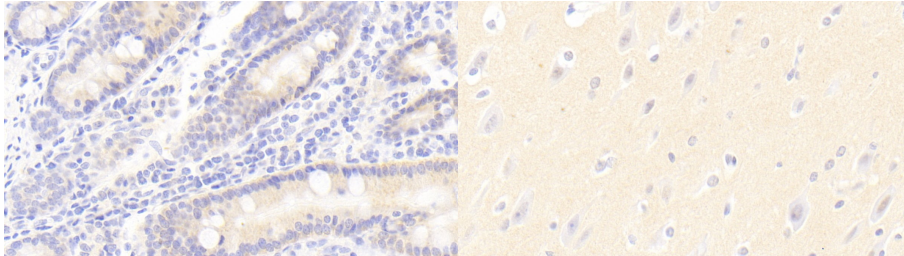
Store at 4°C for frequent use.

Aliquot and store at -20°C for 12 months.

Stability Test: The thermal stability is described by the loss rate. The loss rate was determined by accelerated thermal degradation test, that is, incubate the protein at 37°C for 48h, and no

obvious degradation and precipitation were observed. The loss rate is less than 5% within the expiration date under appropriate storage condition.

[IDENTIFICATION]



DAB staining on IHC-P; Sample:	DAB staining on IHC-P;
Human Small intestine Tissue; Primary	Sample: Human Cerebrum Tissue;
Ab: 5µg/ml Rabbit Anti-Human CNTF	Primary Ab: 5µg/ml Rabbit Anti-Human
Antibody Second Ab: 2µg/mL HRP-	CNTF Antibody
Linked Caprine Anti-Rabbit IgG	Second Ab: 2µg/mL HRP-Linked
Polyclonal Antibody (Catalog:	Caprine Anti-Rabbit IgG Polyclonal
SAA544Rb19)	Antibody
	(Catalog: SAA544Rb19)

[IMPORTANT NOTE]

The kit is designed for research use only, we will not be responsible for any issue if the kit was used in clinical diagnostic or any other procedures.