

PAJ322Hu01

Polyclonal Antibody to Cystatin B (CSTB)

Organism Species: *Homo sapiens (Human)*

Instruction manual

FOR RESEARCH USE ONLY

NOT FOR USE IN CLINICAL DIAGNOSTIC PROCEDURES

13th Edition (Revised in Aug, 2023)

[PROPERTIES]

Source: Polyclonal antibody preparation

Host: Rabbit

Purification: Antigen-specific affinity chromatography followed by Protein A affinity chromatography

Traits: Liquid

Concentration: 0.5mg/ml

UOM: 100µl

Cross Reactivity: N/A

Applications: WB;IHC;ICC/IF;FCM

[IMMUNOGEN]

Immunogen: Recombinant CSTB (Met1~Phe98 (Accession # P04080)) expressed in *E.coli*

Accession No.: RPJ322Hu01

[APPLICATIONS]

Western blotting: 0.01-2µg/mL;

Immunohistochemistry: 5-20µg/mL;

Immunocytochemistry: 5-20µg/mL;

For flow cytometry: 0.5-2 µg per 10⁶ cells in 100 µl volume.

Optimal working dilutions must be determined by end user.

[FORMULATION]

Form & Buffer: Supplied as solution form in 0.01M PBS, pH7.4, containing 0.05% Proclin-300, 50% glycerol.

[STORAGE AND STABILITY]

Storage: Avoid repeated freeze/thaw cycles.

Store at 4°C for frequent use.

Aliquot and store at -20°C for 24 months.

Stability Test: The thermal stability is described by the loss rate. The loss rate was determined

by accelerated thermal degradation test, that is, incubate the protein at 37°C for 48h, and no obvious degradation and precipitation were observed. The loss rate is less than 5% within the expiration date under appropriate storage condition.

[IDENTIFICATION]

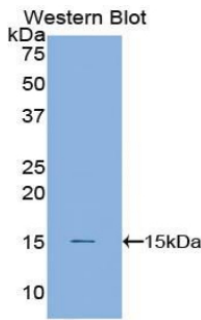
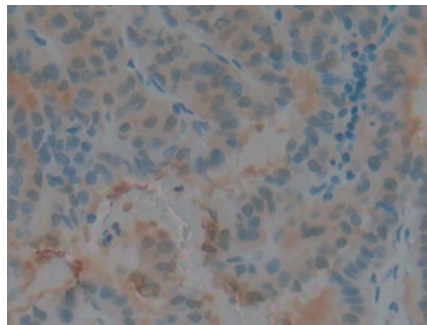
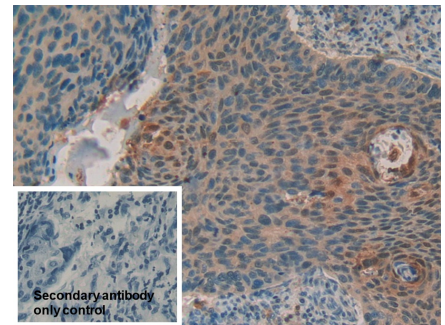


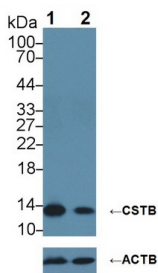
Figure. Western Blot; Sample: Recombinant CSTB, Human.



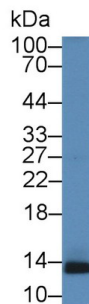
DAB staining on IHC-P; Samples: Human Thyroid Tissue; Primary Ab: 20µg/ml Rabbit Anti-Human CSTB Antibody Second Ab: 2µg/mL HRP-Linked Caprine Anti-Rabbit IgG Polyclonal Antibody (Catalog: SAA544Rb19)



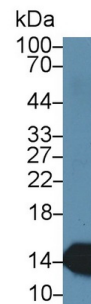
DAB staining on IHC-P; Sample: Human Esophagus cancer Tissue Primary Ab: 20µg/ml Rabbit Anti-Human CSTB Antibody Control: Used PBS instead of primary antibody Second Ab: 2µg/ml HRP-Linked Caprine Anti-Rabbit IgG Polyclonal Antibody (Catalog: SAA544Rb19)



Knockout Verification:
Lane 1: Wild-type HepG2 cell lysate;
Lane 2: CSTB knockout HepG2 cell lysate;
Predicted MW: 11kDa

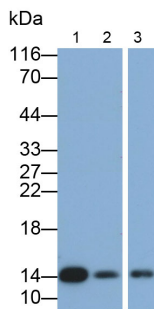


Western Blot; Sample: Human Liver lysate;
Primary Ab: 2µg/ml Rabbit Anti-Human CSTB Antibody
Second Ab: 0.2µg/mL HRP-Linked



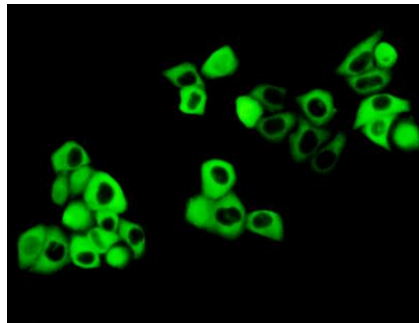
Western Blot; Sample: Human HepG2 cell lysate;
Primary Ab: 2µg/ml Rabbit Anti-Human CSTB Antibody
Second Ab: 0.2µg/mL HRP-Linked

Observed MW: 14kDa
 Primary Ab: 2µg/ml Rabbit Anti-Human
 CSTB Antibody
 Second Ab: 0.2µg/mL HRP-Linked
 Caprine Anti-Rabbit IgG Polyclonal
 Antibody
 (Catalog: SAA544Rb19)



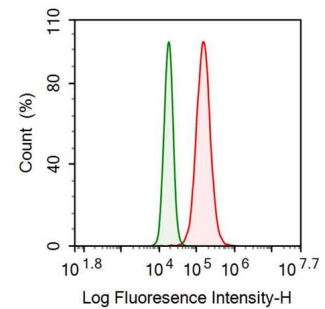
Western Blot; Samples: Lane1: HepG2
 cell lysate; Lane2: MCF7 cell lysate;
 Lane3: A549 cell lysate;
 Primary Ab: 0.05µg/ml Rabbit Anti-
 Human CSTB Antibody
 Second Ab: 0.2µg/ml HRP-Linked
 Caprine Anti-Rabbit IgG Polyclonal
 Antibody
 (Catalog: SAA544Rb19)

Caprine Anti-Rabbit IgG Polyclonal
 Antibody
 (Catalog: SAA544Rb19)



FITC staining on IF;
 Sample: Human MCF7 cell;
 Primary Ab: 10µg/ml Rabbit Anti-
 Human CSTB Antibody
 Second Ab: 1.3µg/ml FITC-Linked
 Caprine Anti-Rabbit IgG Polyclonal
 Antibody
 (Catalog: SAA544Rb18)

Caprine Anti-Rabbit IgG Polyclonal
 Antibody
 (Catalog: SAA544Rb19)



Human A431 cell was fixed with 2%
 paraformaldehyde (10 min) ,
 permeabilised with 0.1% BSA-Triton
 X-100, then stained with 20µg/ml rabbit
 Anti-human CSTB Polyclonal Antibody
 (Catalog PAJ322Hu01, red histogram)
 or Isotype control antibody (Catalog
 IS067-Rb01, green histogram), followed
 by 1µg/ml FITC-conjugated Anti-rabbit
 IgG Secondary Antibody (Catalog
 SAA544Rb18).

[IMPORTANT NOTE]

The kit is designed for research use only, we will not be responsible for any issue if the kit was used in clinical diagnostic or any other procedures.