

**PAB231Mu01**

**Polyclonal Antibody to Cytokeratin 18 (CK18)**

**Organism Species: *Mus musculus* (Mouse)**

***Instruction manual***

FOR RESEARCH USE ONLY

NOT FOR USE IN CLINICAL DIAGNOSTIC PROCEDURES

---

13th Edition (Revised in Aug, 2023)

### **[ PROPERTIES ]**

**Source:** Polyclonal antibody preparation

**Host:** Rabbit

**Purification:** Antigen-specific affinity chromatography followed by Protein A affinity chromatography

**Traits:** Liquid

**Concentration:** 0.7mg/ml

**UOM:** 100µl

**Cross Reactivity:** Human.

**Applications:** WB,IHC

### **[ IMMUNOGEN ]**

**Immunogen:** Recombinant CK18 (Met1~His423) expressed in *E.coli*

**Accession No.:** RPB231Mu01

### **[ APPLICATIONS ]**

Western blotting: 0.5-2µg/mL

Immunohistochemistry: 5-20µg/mL

Immunocytochemistry: 5-20µg/mL

Optimal working dilutions must be determined by end user.

### **[ FORMULATION ]**

**Form & Buffer:** Supplied as solution form in 0.01M PBS, pH7.4, containing 0.05% Proclin-300, 50% glycerol.

### **[ STORAGE AND STABILITY ]**

**Storage:** Avoid repeated freeze/thaw cycles.

Store at 4°C for frequent use.

Aliquot and store at -20°C for 24 months.

**Stability Test:** The thermal stability is described by the loss rate. The loss rate was determined by accelerated thermal degradation test, that is, incubate the protein at 37°C for 48h, and no

obvious degradation and precipitation were observed. The loss rate is less than 5% within the expiration date under appropriate storage condition.

**[ IDENTIFICATION ]**

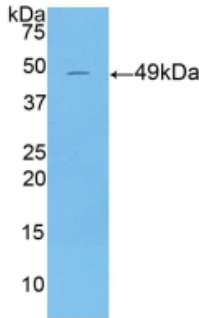
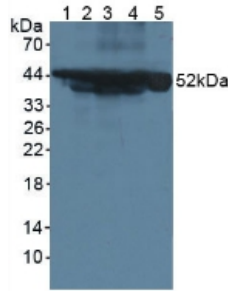


Figure. Western Blot; Sample: Recombinant KRT18, Mouse.

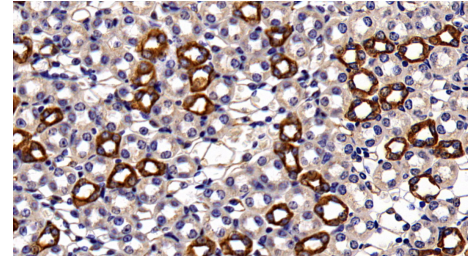


Western Blot; Sample: Lane1: Mouse Serum; Lane2: Mouse Small intestine lysate; Lane3: Mouse Pancreas lysate; Lane4: Mouse Liver lysate; Lane5: Hela cell lysate

Primary Ab: 1µg/ml Rabbit Anti-Mouse CK18 Antibody

Second Ab: 0.2µg/mL HRP-Linked Caprine Anti-Rabbit IgG Polyclonal Antibody

(Catalog: SAA544Rb19)



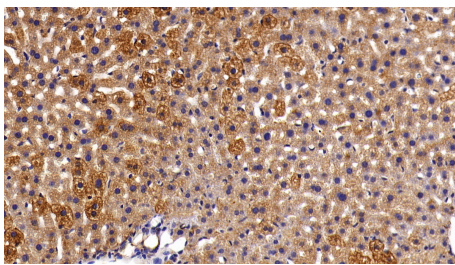
DAB staining on IHC-P;

Sample: Mouse Kidney Tissue;

Primary Ab: 20ug/ml Rabbit Anti-Mouse CK18 Antibody

Second Ab: 2µg/mL HRP-Linked Caprine Anti-Rabbit IgG Polyclonal Antibody

(Catalog: SAA544Rb19)



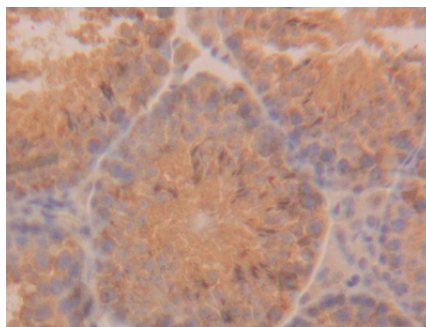
DAB staining on IHC-P;

Sample: Mouse Liver Tissue;

Primary Ab: 20ug/ml Rabbit Anti-Mouse CK18 Antibody

Second Ab: 2µg/mL HRP-Linked Caprine Anti-Rabbit IgG Polyclonal Antibody

(Catalog: SAA544Rb19)

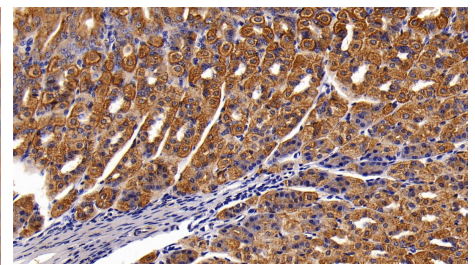


DAB staining on IHC-P;

Samples: Mouse Testis Tissue;

Primary Ab: 20µg/ml Rabbit Anti-Mouse KRT18 Antibody

Second Ab: 2µg/mL HRP-Linked Caprine Anti-Rabbit IgG Polyclonal



DAB staining on IHC-P;

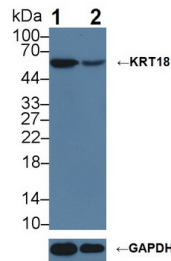
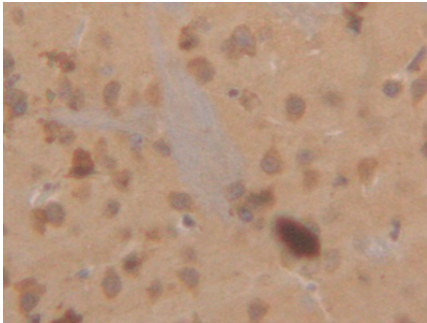
Sample: Mouse Stomach Tissue;

Primary Ab: 20ug/ml Rabbit Anti-Mouse CK18 Antibody

Second Ab: 2µg/mL HRP-Linked Caprine Anti-Rabbit IgG Polyclonal Antibody

(Catalog: SAA544Rb19)

Antibody  
(Catalog: SAA544Rb19)



DAB staining on IHC-P; Samples:  
Mouse Cerebrum Tissue; Primary Ab:  
20µg/ml Rabbit Anti-Mouse KRT18  
Antibody Second Ab: 2µg/mL HRP-  
Linked Caprine Anti-Rabbit IgG  
Polyclonal Antibody (Catalog:  
SAA544Rb19)

Knockout Varification:  
Lane 1: Wild-type HeLa cell lysate;  
Lane 2: KRT18 knockout HeLa cell  
lysate;  
Predicted MW: 48kDa  
Observed MW: 52kDa  
Primary Ab: 1µg/ml Rabbit Anti-Mouse  
KRT18 Antibody  
Second Ab: 0.2µg/mL HRP-Linked  
Caprine Anti-Rabbit IgG Polyclonal  
Antibody  
(Catalog: SAA544Rb19)

**[ IMPORTANT NOTE ]**

The kit is designed for research use only, we will not be responsible for any issue if the kit was used in clinical diagnostic or any other procedures.