

**PAD766Hu01**

**Polyclonal Antibody to Preprovasopressin (VP)**

**Organism Species: Homo sapiens (Human)**

***Instruction manual***

FOR IN VITRO USE AND RESEARCH USE ONLY

NOT FOR USE IN CLINICAL DIAGNOSTIC PROCEDURES

---

9th Edition (Revised in Jul, 2013)

## **[ PRODUCT INFORMATION ]**

**Immunogen:** Preprovasopressin, Human

**Purification:** Affinity Chromatography.

**Clonality:** Polyclonal

**Applications:** WB, ICC, IHC-P, IHC-F, ELISA

**Host:** Rabbit

**Concentration:** 200µg/mL

**Immunoglobulin Type:** IgG

**UOM:** 100µg

## **[ IMMUNOGEN INFORMATION ]**

**Immunogen:** Recombinant Preprovasopressin (Tyr21~Tyr164) expressed in *E.coli*.

**Accession No.:** RPD766Hu01

**Sequence:** The target protein is fused with two N-terminal Tags, His-tag and T7-tag and its sequence is listed below.

MGSSHHHHHH SSSLVPRGSH MASMTGGQQM GRGSEF- YFQNCPRGGK RAMSDLELRQ  
CLPCGPGGKG RCFGPSICCA DELGCFVGTA EALRCQEENY LPSPCQSGQK  
ACGSGGRCAA FGVCCNDESC VTEPECREGF HRRARASDRS NATQLDGPAG  
ALLLRLVQLA GAPEPFEPAPQ PDAY

## **[ ANTIBODY SPECIFICITY ]**

The antibody is a rabbit polyclonal antibody raised against Preprovasopressin. It has been selected for its ability to recognize Preprovasopressin in immunohistochemical staining and western blotting.

## **[ APPLICATIONS ]**

Western blotting: 1:50-400

Immunocytochemistry in formalin fixed cells: 1:50-500

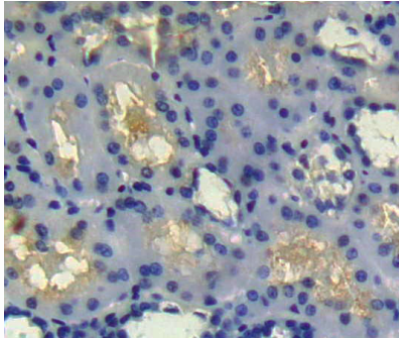
Immunohistochemistry in formalin fixed frozen section: 1:50-500

Immunohistochemistry in paraffin section: 1:10-100

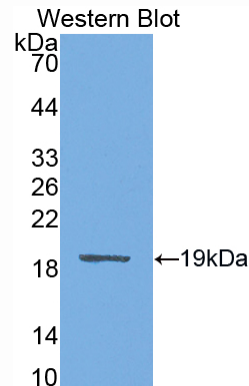
Enzyme-linked Immunosorbent Assay: 1:100-200

Optimal working dilutions must be determined by end user.

## [ IMAGES ]



Used in DAB staining on formalin fixed  
paraffin-embedded kidney tissue



Used in Western Blot, Sample:  
Recombinant Preprovasopressin,

## [ CONTENTS ]

**Form & Buffer:** Supplied as solution form in PBS, pH7.4, containing 0.02% NaN<sub>3</sub>, 50% glycerol.

## [ QUALITY CONTROL ]

**Content:** The quality control contains recombinant Preprovasopressin (Tyr21~Tyr164) disposed in loading buffer.

**Usage:** 10uL per well when 3,3'-Diaminobenzidine(DAB) as the substrate.  
5uL per well when used in enhanced chemiluminescent (ECL).

**Note:** The quality control is specifically manufactured as the positive control. Not used for other purposes.

**Loading Buffer:** 100mM Tris(pH8.8), 2% SDS, 200mM NaCl, 50% glycerol, BPB 0.01%, NaN<sub>3</sub> 0.02%.

## [ STORAGE ]

Store at 4°C for frequent use. Stored at -20°C to -80°C in a manual defrost freezer for one year without detectable loss of activity. Avoid repeated freeze-thaw cycles.