

**PAB870Hu01**

**Polyclonal Antibody to Tubulin Beta (TUBb)**

**Organism Species: *Homo sapiens (Human)***

***Instruction manual***

FOR RESEARCH USE ONLY

NOT FOR USE IN CLINICAL DIAGNOSTIC PROCEDURES

---

13th Edition (Revised in Aug, 2023)

## **[ PROPERTIES ]**

**Source:** Polyclonal antibody preparation

**Host:** Rabbit

**Purification:** Antigen-specific affinity chromatography followed by Protein A affinity chromatography

**Traits:** Liquid

**Concentration:** 0.5mg/ml

**UOM:** 100µl

**Cross Reactivity:** Mouse; Rat; Cavia; Canine; Pig; Bovine; Goat; Ovine; Equine; Gallus.

**Applications:** WB; IHC; ICC/IF

## **[ IMMUNOGEN ]**

**Immunogen:** Recombinant TUBb (Val170~Val419) expressed in *E.coli*

**Accession No.:** RPB870Hu01

## **[ APPLICATIONS ]**

Western blotting: 0.01-2µg/mL;

Immunohistochemistry: 5-20µg/mL;

Immunocytochemistry: 5-20µg/mL;

Optimal working dilutions must be determined by end user.

## **[ FORMULATION ]**

**Form & Buffer:** Supplied as solution form in 0.01M PBS, pH7.4, containing 0.05% Proclin-300, 50% glycerol.

## **[ STORAGE AND STABILITY ]**

**Storage:** Avoid repeated freeze/thaw cycles.

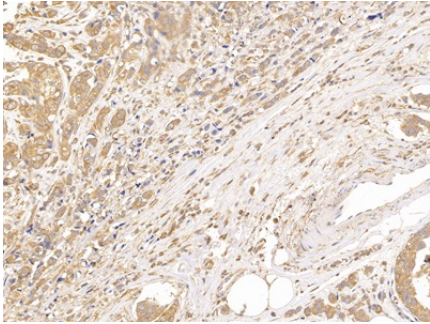
Store at 4°C for frequent use.

Aliquot and store at -20°C for 24 months.

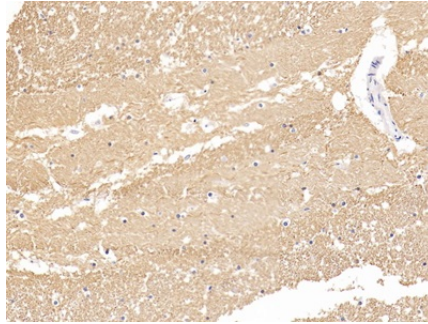
**Stability Test:** The thermal stability is described by the loss rate. The loss rate was determined by accelerated thermal degradation test, that is, incubate the protein at 37°C for 48h, and no

obvious degradation and precipitation were observed. The loss rate is less than 5% within the expiration date under appropriate storage condition.

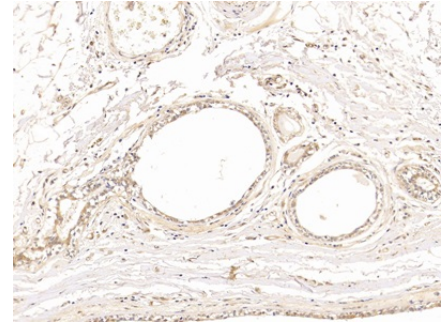
**[ IDENTIFICATION ]**



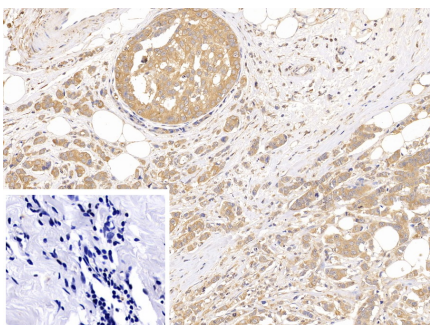
DAB staining on IHC-P; Samples: Human Breast cancer Tissue; Primary Ab: 10µg/ml Rabbit Anti-Human TUBb Antibody Second Ab: 2µg/mL HRP-Linked Caprine Anti-Rabbit IgG Polyclonal Antibody (Catalog: SAA544Rb19)



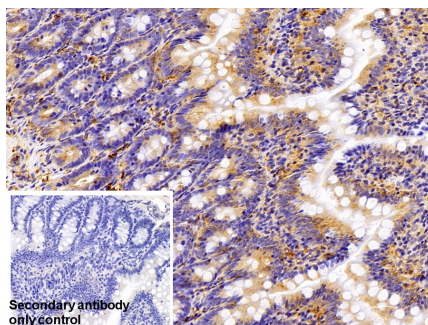
DAB staining on IHC-P; Samples: Human Cerebrum Tissue; Primary Ab: 10µg/ml Rabbit Anti-Human TUBb Antibody Second Ab: 2µg/mL HRP-Linked Caprine Anti-Rabbit IgG Polyclonal Antibody (Catalog: SAA544Rb19)



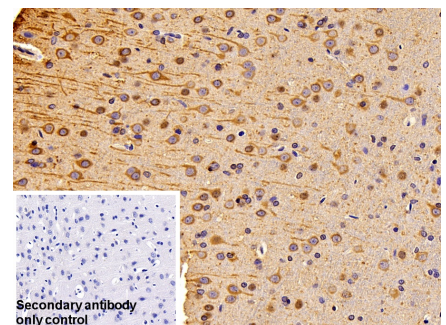
DAB staining on IHC-P; Samples: Human Mammary gland Tissue; Primary Ab: 10µg/ml Rabbit Anti-Human TUBb Antibody Second Ab: 2µg/mL HRP-Linked Caprine Anti-Rabbit IgG Polyclonal Antibody (Catalog: SAA544Rb19)



DAB staining on IHC-P; Sample: Human Breast cancer Tissue Primary Ab: 10µg/ml Rabbit Anti-Human TUBb Antibody Control: Used PBS instead of primary antibody Second Ab: 2µg/ml HRP-Linked Caprine Anti-Rabbit IgG Polyclonal Antibody (Catalog: SAA544Rb19)

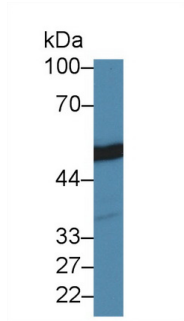


DAB staining on IHC-P; Sample: Rat Colon Tissue Primary Ab: 10µg/ml Rabbit Anti-Human TUBb Antibody Control: Used PBS instead of primary antibody Second Ab: 2µg/ml HRP-Linked Caprine Anti-Rabbit IgG Polyclonal



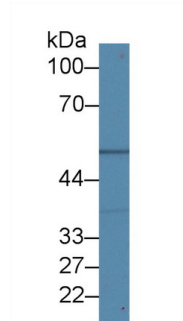
DAB staining on IHC-P; Sample: Rat Cerebrum Tissue Primary Ab: 10µg/ml Rabbit Anti-Human TUBb Antibody Control: Used PBS instead of primary antibody Second Ab: 2µg/ml HRP-Linked Caprine Anti-Rabbit IgG Polyclonal

Antibody  
(Catalog: SAA544Rb19)

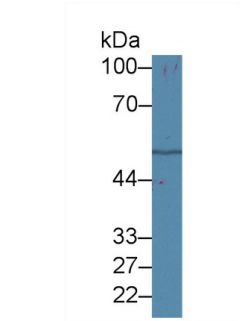


Western Blot; Sample: Mouse Cerebrum lysate;  
Primary Ab: 1µg/ml Rabbit Anti-Human TUBb Antibody  
Second Ab: 0.2µg/mL HRP-Linked Caprine Anti-Rabbit IgG Polyclonal Antibody  
(Catalog: SAA544Rb19)

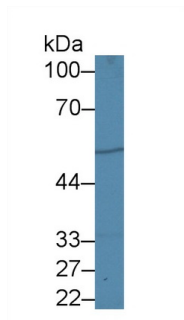
Antibody  
(Catalog: SAA544Rb19)



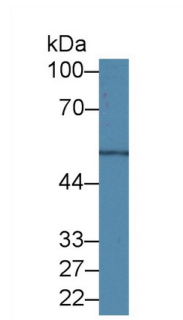
Western Blot; Sample: Rat Liver lysate;  
Primary Ab: 1µg/ml Rabbit Anti-Human TUBb Antibody  
Second Ab: 0.2µg/mL HRP-Linked Caprine Anti-Rabbit IgG Polyclonal Antibody  
(Catalog: SAA544Rb19)



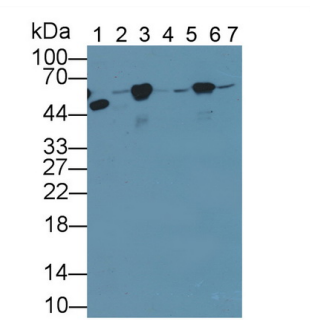
Western Blot; Sample: Rat Kidney lysate;  
Primary Ab: 1µg/ml Rabbit Anti-Human TUBb Antibody  
Second Ab: 0.2µg/mL HRP-Linked Caprine Anti-Rabbit IgG Polyclonal Antibody  
(Catalog: SAA544Rb19)



Western Blot; Sample: Mouse Liver lysate;  
Primary Ab: 1µg/ml Rabbit Anti-Human TUBb Antibody  
Second Ab: 0.2µg/mL HRP-Linked Caprine Anti-Rabbit IgG Polyclonal Antibody  
(Catalog: SAA544Rb19)

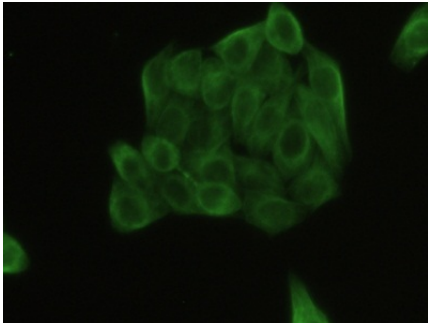


Western Blot; Sample: Mouse Kidney lysate;  
Primary Ab: 1µg/ml Rabbit Anti-Human TUBb Antibody  
Second Ab: 0.2µg/mL HRP-Linked Caprine Anti-Rabbit IgG Polyclonal Antibody  
(Catalog: SAA544Rb19)

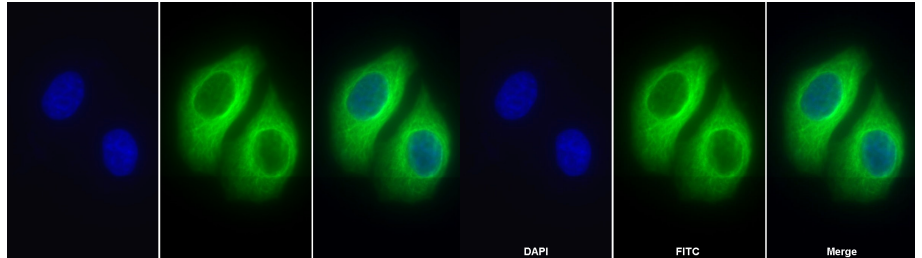


Western Blot; Sample: Lane1: Mouse Heart lysate; Lane4: Porcine Liver lysate; Lane5: Porcine Cerebrum lysate; Lane6: Porcine Heart lysate; Lane7: Bovine Liver lysate; Lane8: Bovine Cerebrum lysate; Lane9: Bovine Heart lysate  
Primary Ab: 1.5µg/mL Rabbit Anti-Human TUBb Ab  
Second Ab: 0.2µg/mL HRP-Linked Caprine Anti-Rabbit IgG Polyclonal

Antibody  
(Catalog: SAA544Rb19)



FITC staining on IF;  
Samples: Human MCF7 Cells;  
Primary Ab: 10µg/ml Rabbit Anti-Human TUBb Antibody  
Second Ab: 1µg/ml FITC-Linked Caprine Anti-Rabbit IgG Polyclonal Antibody  
(Catalog: SAA544Rb18)



FITC staining on IF;  
Sample: Human HeLa cell;  
Primary Ab: 20µg/ml Rabbit Anti-Human TUBb Antibody  
Second Ab: 2µg/ml FITC-Linked Caprine Anti-Rabbit IgG Polyclonal Antibody  
(Catalog: SAA544Rb18)

FITC staining on IF;  
Sample: HeLa cell  
Primary Ab: 20µg/ml Rabbit Anti-Human TUBb Antibody  
Second Ab: 2µg/ml FITC-Linked Caprine Anti-Rabbit IgG Polyclonal Antibody  
(Catalog: SAA544Rb11)

**[ IMPORTANT NOTE ]**

The kit is designed for research use only, we will not be responsible for any issue if the kit was used in clinical diagnostic or any other procedures.