



CSI102Ca01

Primary Canine Osteoblasts (OB)

Organism Species: *Canis familiaris*; Canine (Dog)

Instruction manual

FOR RESEARCH USE ONLY

NOT FOR USE IN CLINICAL DIAGNOSTIC PROCEDURES

2nd Edition (Revised in Jun, 2023)

[DESCRIPTION]

Cell Type: Osteoblast

Synonyms: OB

Species: *Canis familiaris*; Canine (Dog)

Tissue Source: Calvarium bone

Size: $>5 \times 10^5$ cell/vial

[PROPERTIES]

Cell activity: $>85\%$ (Viability by Trypan Blue Exclusion).

Formulation: Frozen 1 mL or T25 flask.

Biosafety: Negative for HIV-1, HBV, HCV, mycoplasma, bacteria, yeast and fungi.

Applications: For research use only. It is not approved for human or animal use, or for application in clinical diagnostic procedures.

Growth Properties: Adherent

[CONTENTS]

Form & Buffer: Supplied as solution form in frozen stock solution, containing 90% FBS+10% DMSO.

[USAGE]

Upon receiving the cells in a T-25 flask at room temperature, immediately transfer the cells to 37°C, 5% incubator; the cells in vials, directly and immediately transfer the cells from dry ice to liquid nitrogen.

Culture conditions:

L-DMEM+10% FBS+1% Osteoblast Growth Supplement+1% Penicillin-Streptomycin Solution

Temperature: 37°C

Condition: 95% air, 5% carbon dioxide

Cell recovery:

After receiving the cells, shake at 37°C in a water bath until completely dissolved, transfer to a 15 ml centrifuge tube, add 3-5 times complete culture solution, 1000 rpm for 5 min, discard the supernatant, and place in a T25 flask for culture.

Cell passage:

1. Cell passage when cell growth at 85-95%.
2. Discard the medium and wash with PBS 1-2 times.

3. Add 1 ml of Trypsin at 37°C, observe the cell under the microscope. If the cells are retracted and rounded, pat the culture flask to let the cells fall off. Stop digestion by adding 2 ml of complete medium containing 10% serum. Make it a single cell suspension.
4. Add the fresh medium to resuspend the cells. Unless otherwise stated, the recommended ratio of primary cells is 1/2.

[Shipping]

Dry ice.

[STORAGE]

Freeze of the liquid nitrogen (90% FBS +10% DMSO).

[IMPORTANT NOTE]

The cell is for research use only, and we will not be responsible for any issue if the cell was used in clinical diagnostic or any other procedures.

[Figure]

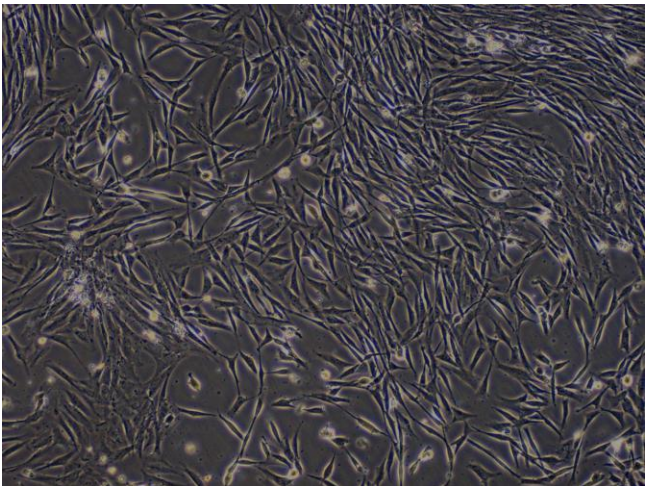


Figure 1

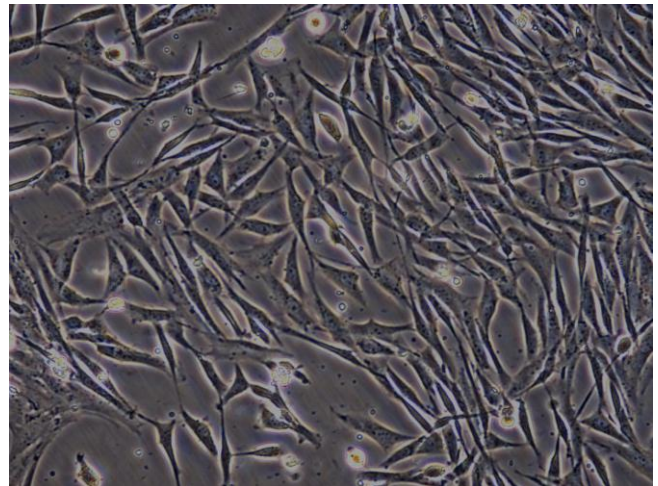


Figure 2

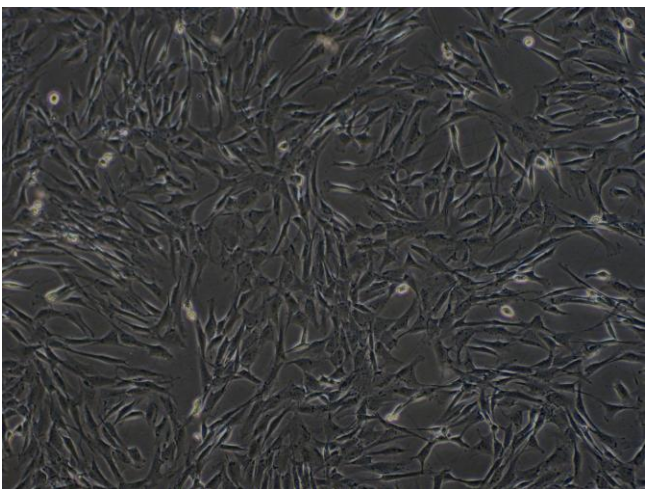


Figure 3

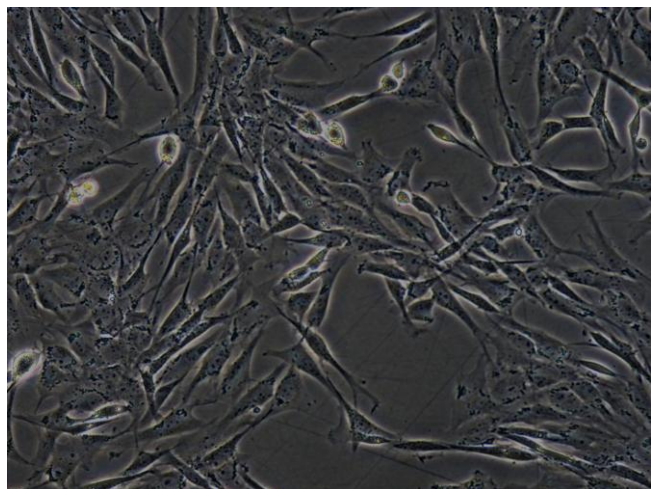


Figure 4

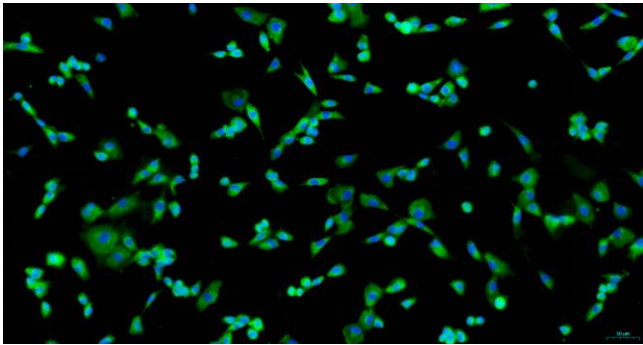


Figure 5

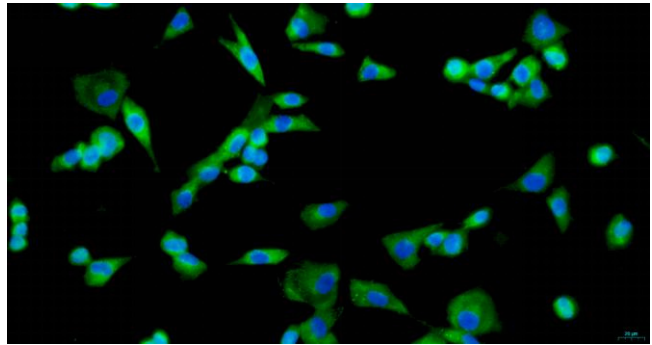


Figure 6

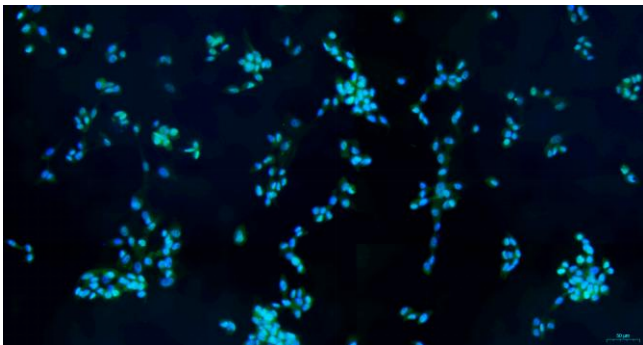


Figure 7

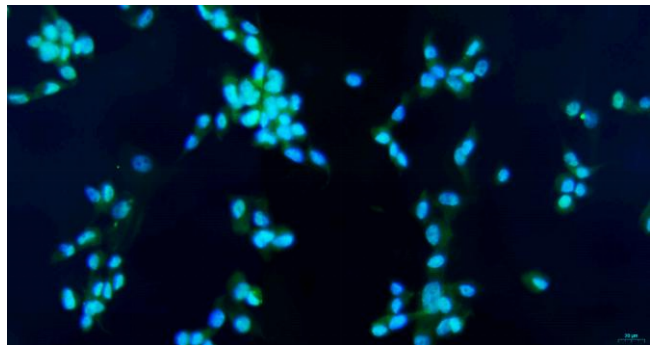


Figure 8

- Figure 1 Morphology of P0 Canine Osteoblasts (Optical microscope,×100)
- Figure 2 Morphology of P0 Canine Osteoblasts (Optical microscope,×200)
- Figure 3 Morphology of P1 Canine Osteoblasts (Optical microscope,×100)
- Figure 4 Morphology of P1 Canine Osteoblasts (Optical microscope,×200)
- Figure 5 Immunofluorescence identification of COL1A1 specific antibody (×200)
- Figure 6 Immunofluorescence identification of COL1A1 specific antibody (×400)
- Figure 7 Immunofluorescence identification of RUNX2 specific antibody (×200)
- Figure 8 Immunofluorescence identification of RUNX2 specific antibody (×400)