

**RPB886Mu02 1mg**  
**Recombinant Angiotensin I Converting Enzyme 2 (ACE2)**  
**Organism Species: *Mus musculus* (Mouse)**  
***Instruction manual***

FOR RESEARCH USE ONLY  
NOT FOR USE IN CLINICAL DIAGNOSTIC PROCEDURES

---

12th Edition (Revised in Aug, 2016)

**[ PROPERTIES ]**

**Source:** Prokaryotic expression

**Host:** *E.coli*

**Residues:** Gln18~Thr740

**Tags:** N-terminal His Tag

**Subcellular Location:** Membrane, Secreted, Cytoplasm

**Purity:** > 90%

**Traits:** Freeze-dried powder

**Buffer formulation:** PBS, pH7.4, containing 0.01% SKL, 5% Trehalose.

**Original Concentration:** 200µg/mL

**Applications:** Positive Control; Immunogen; SDS-PAGE; WB.

(May be suitable for use in other assays to be determined by the end user.)

**Predicted isoelectric point:** 5.2

**Predicted Molecular Mass:** 87.2kDa

**Accurate Molecular Mass:** 87kDa as determined by SDS-PAGE reducing conditions.

**[ USAGE ]**

Reconstitute in 10mM PBS (pH7.4) to a concentration of 0.1-1.0 mg/mL. Do not vortex.

**[ STORAGE AND STABILITY ]**

**Storage:** Avoid repeated freeze/thaw cycles.

Store at 2-8°C for one month.

Aliquot and store at -80°C for 12 months.

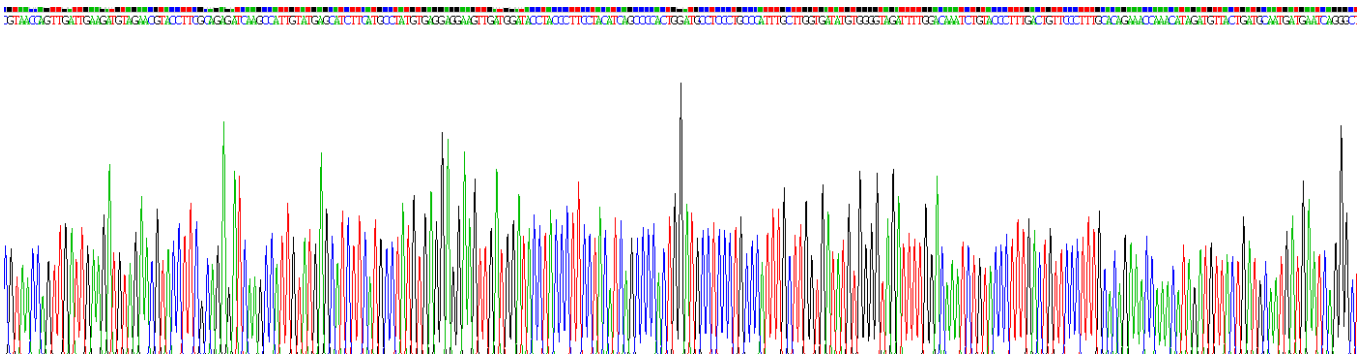
**Stability Test:** The thermal stability is described by the loss rate. The loss rate was determined by accelerated thermal degradation test, that is, incubate the protein at 37°C for 48h, and no obvious degradation and precipitation were observed. The loss rate is less than 5% within the expiration date under appropriate storage condition.

**[ SEQUENCE ]**

```

                QSL TEENAKTFLN NFNQEAEDLS YQSSLASWNY
NTNITEENAQ KMSEAAAKWS AFYEEQSKTA QSFSLQEIQT PIIKRQLQAL
QQSGSSALSA DKNKQLNTIL NTMSTIYSTG KVCNPKNPQE CLLLEPGLDE
IMATSTDYNS RLWAWEGWRA EVGKQLRPLY EEYVVLKNEM ARANNYNDYG
DYWRGDYEA EADGYNYNRN QLIEDVERTF AEIKPLYEHL HAYVRRKLM
TYPYISPTG CLPAHLLGDM WGRFWTNLYP LTVPFAQKPN IDVTDAMMNQ
GWD AERIFQE AEKFFVSVGL PHMTQGFWAN SMLTEPADGR KVVCHPTAWD
LGHGDFRIKM CTKV TMDNFL TAHHEM GHIQ YDMAYARQPF LLRNGANEGF
HEAVGEIMSL SAATPKHLKS IGLLPSDFQE DSETEINFLL KQALTIVGTL
PFTYMLEKWR WMVFRGEIPK EQWMKKWEM KREIVGVVEP LPHDETYCDP
ASLFHVSNDY SFIRYYTRTI YQFQFQALC QAAKYNGSLH KCDISNSTEA
GQKLLKMLSL GNSEPWTKAL ENVVGARNMD VKPLLNYFQP LFDWLKEQNR
NSFVGWNT EW SPYADQSIKV RISLKSALGA NAYEWTNNEM FLFRSSVAYA
MRKYFSIIKN QTVPFLEEDV RVSDLKPRVS FYFFVTSPQN VSDVIPRSEV
EDAIRMSRGR INDVFLGNDN SLEFLGIHPT LEPPYQPPVT
    
```

**[ IDENTIFICATION ]**



**Figure . Gene Sequencing (extract)**

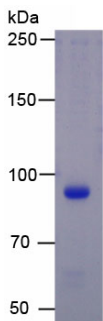


Figure. SDS-PAGE

**[ IMPORTANT NOTE ]**

The kit is designed for research use only, we will not be responsible for any issue if the kit was used in clinical diagnostic or any other procedures.