

**RPA013Hu02 100µg**  
**Recombinant Bone Morphogenetic Protein 2 (BMP2)**  
**Organism Species: Homo sapiens (Human)**  
***Instruction manual***

FOR IN VITRO USE AND RESEARCH USE ONLY  
NOT FOR USE IN CLINICAL DIAGNOSTIC PROCEDURES

---

12th Edition (Revised in Aug, 2016)

## [ **PROPERTIES** ]

**Source:** Prokaryotic expression.

**Host:** *E. coli*

**Residues:** Leu24~Arg396

**Tags:** N-terminal His-Tag

**Tissue Specificity:** Lung, Spleen, Brain, Liver, Kidney.

**Subcellular Location:** Secreted.

**Purity:** >92%

**Traits:** Freeze-dried powder

**Buffer formulation:** 20mM Tris, 150mM NaCl, pH8.0, containing 1mM EDTA, 1mM DTT, 0.01% sarcosyl, 5%Trehalose and Proclin300.

**Original Concentration:** 200ug/mL

**Applications:** SDS-PAGE; WB; ELISA; IP; CoIP; Purification; Amine Reactive Labeling.

(May be suitable for use in other assays to be determined by the end user.)

**Predicted isoelectric point:** 9.2

**Predicted Molecular Mass:** 46.1kDa

**Accurate Molecular Mass:** 44kDa as determined by SDS-PAGE reducing conditions.

## [ **USAGE** ]

Reconstitute in 20mM Tris, 150mM NaCl (pH8.0) to a concentration of 0.1-1.0 mg/mL. Do not vortex.

## [ **STORAGE AND STABILITY** ]

**Storage:** Avoid repeated freeze/thaw cycles.

Store at 2-8°C for one month.

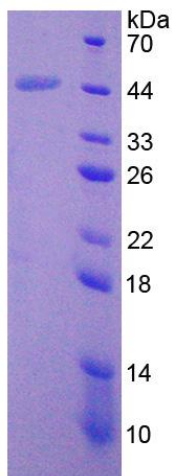
Aliquot and store at -80°C for 12 months.

**Stability Test:** The thermal stability is described by the loss rate. The loss rate was determined by accelerated thermal degradation test, that is, incubate the protein at 37°C for 48h, and no obvious degradation and precipitation were observed. The loss rate is less than 5% within the expiration date under appropriate storage condition.

**[ SEQUENCE ]**

		LVPELGR	RKFAAASSGR	PSSQPSDEVL
SEFELRLLSM	FGLKQRPTPS	RDVVPPYML	DLYRRHSGQP	GSPAPDHRLE
RAASRANTVR	SFHHEESLEE	LPETSGKTR	RFFFNLSSIP	TEEFITSAEL
QVFREQMQDA	LGNNSSFHHR	INIYEIIKPA	TANSKFPVTR	LLDTRLVNQN
ASRWESFDVT	PAVMRWTAQG	HANHGFVVEV	AHLEEKQGVV	KRHVRISRSL
HQDEHSWSQI	RPLLVTFGHD	GKGHPLHKRE	KRQAKHKQRK	RLKSSCKRHP
LYVDFSDVGW	NDWIVAPPGY	HAFYCHGECF	FPLADHLNST	NHAIVQTLVN
SVNSKIPKAC	CVPTELSAIS	MLYLDENEKV	VLKNYQDMVV	EGCGCR

**[ IDENTIFICATION ]**



**Figure 1. SDS-PAGE**