

RPG676Hu02 50µg

Recombinant Cereblon (CRBN)

Organism Species: *Homo sapiens (Human)*

Instruction manual

FOR RESEARCH USE ONLY

NOT FOR USE IN CLINICAL DIAGNOSTIC PROCEDURES

13th Edition (Revised in Aug, 2023)

[PROPERTIES]

Source: Prokaryotic expression

Host: *E.coli*

Residues: Met1~Leu442

Tags: N-terminal His Tag

Subcellular Location: Membrane, Nucleus, Cytoplasm

Purity: > 80%

Traits: Freeze-dried powder

Buffer formulation: PBS, pH7.4, containing 0.01% SKL, 5% Trehalose .

Original Concentration: 100µg/mL

Applications: Positive Control; Immunogen; SDS-PAGE; WB.

(May be suitable for use in other assays to be determined by the end user.)

Predicted isoelectric point: 5.3

Predicted Molecular Mass: 54.2kDa

Accurate Molecular Mass: 54kDa as determined by SDS-PAGE reducing conditions.

[USAGE]

Reconstitute in ddH₂O to a concentration of 0.1-0.25 mg/mL. Do not vortex.

[STORAGE AND STABILITY]

Storage: Avoid repeated freeze/thaw cycles.

Store at 2-8°C for one month.

Aliquot and store at -80°C for 12 months.

Stability Test: The thermal stability is described by the loss rate. The loss rate was determined by accelerated thermal degradation test, that is, incubate the protein at 37°C for 48h, and no obvious degradation and precipitation were observed. The loss rate is less than 5% within the expiration date under appropriate storage condition.

[SEQUENCE]

```

MAGEGDQQDA AHNMGNHLPL LPAESEEEDE MEVEDQDSKE AKKPNIINF
TSLPTSHTYL GADMEEFHGR TLHDDSCQV IPVLPQVMMI LIPGQTLPLQ
LFHPQEVSMV RNLIQKDRTF AVLAYSINVQE REAQFGTTAE IYAYREEQDF
GIEIVKVKAI GRQRFKVLLEL RTQSDGIQQA KVQILPECVL PSTMSAVQLE
SLNKCQIFPS KPVSREDQCS YKWWQKYQKR KFHCANLTSW PRWLYSLYDA
ETLMDRIKKQ LREWENLKD DSLPSNPIDF SYRVAACLPI DDVLRIQLLK
IGSAIQRLRC ELDIMNKCTS LCCKQCQETE ITTKNEIFSL SLCGPMAAYV
NPHGYVHETL TVYKACNLNL IGRPSTEHSW FPGYAWTVAQ CKICASHIGW
KFTATKKDMS PQKFWGLTRS ALLPTIPDTE DEISPDKVIL CL
    
```

[IDENTIFICATION]

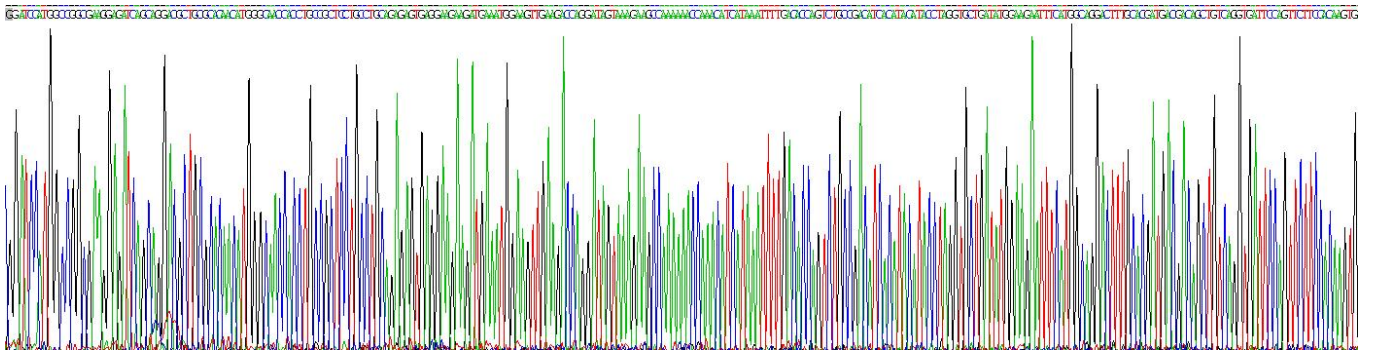


Figure . Gene Sequencing (extract)

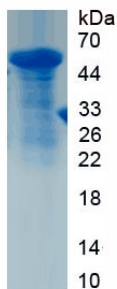


Figure. SDS-PAGE

[IMPORTANT NOTE]

The kit is designed for research use only, we will not be responsible for any issue if the kit was used in clinical diagnostic or any other procedures.