

**RPA030Mu01 10 $\mu$ g**  
**Recombinant Factor Related Apoptosis (FAS)**  
**Organism Species: *Mus musculus* (Mouse)**  
***Instruction manual***

FOR IN VITRO USE AND RESEARCH USE ONLY  
NOT FOR USE IN CLINICAL DIAGNOSTIC PROCEDURES

---

---

12th Edition (Revised in Aug, 2016)

## **[ PROPERTIES ]**

**Source:** Prokaryotic expression.

**Host:** *E. coli*

**Residues:** Gln22~Arg169

**Tags:** N-terminal His-Tag

**Tissue Specificity:** Liver, Lung, Heart.

**Subcellular Location:** Membrane; Single-pass type I membrane protein.

**Purity:** >95%

**Traits:** Freeze-dried powder

**Buffer formulation:** 20mM Tris, 150mM NaCl, pH8.0, containing 1mM EDTA, 1mM DTT, 0.01% sarcosyl, 5%Trehalose and Proclin300.

**Original Concentration:** 200µg/mL

**Applications:** Positive Control; Immunogen; SDS-PAGE; WB.

(May be suitable for use in other assays to be determined by the end user.)

**Predicted isoelectric point:** 7.8

**Predicted Molecular Mass:** 20.0kDa

**Accurate Molecular Mass:** 20kDa as determined by SDS-PAGE reducing conditions.

## **[ USAGE ]**

Reconstitute in 20mM Tris, 150mM NaCl (pH8.0) to a concentration of 0.1-1.0 mg/mL. Do not vortex.

## **[ STORAGE AND STABILITY ]**

**Storage:** Avoid repeated freeze/thaw cycles.

Store at 2-8°C for one month.

Aliquot and store at -80°C for 12 months.

**Stability Test:** The thermal stability is described by the loss rate. The loss rate was determined by accelerated thermal degradation test, that is, incubate the protein at 37°C for 48h, and no obvious degradation and precipitation were observed. The loss rate is less than 5% within the expiration date under appropriate storage condition.

## [ SEQUENCE ]

```
QGTNSISES LKLRRRVRET DKNCSEGLYQ  
GGPFCCQPCQ PGKKKVEDCK MNGGTPCAP CTEGKEYMDK NHYADKCRRC  
TLCDEEHGLE VETNCTLTQN TKCKCKPDFY CDSPGCEHCV RCASCEHGTL  
EPCTATSNTN CRKQSPNR
```

## [ IDENTIFICATION ]

CGAGGTCATATGCGTCTCGGAGCTTAAAGCTGGGGAGCGGTTCTGAAACTGTAAAACTCTCTGAGAGGTTATTCAGGAGGCGCAATTTTCTGTGACGCTCCGACTGTGTAAAAAAGTTGAGGACTGCAAAATGATGCGGGGTACCGCACTGTGCGCCCTGCGAGGGGGAGGATACCTGGAGCGAACTTATGCTG  
GGTBSISBSLKLRRRVRETRDKUCSRLGLLQGGGPFCCQPCQPKRKEVEDCKHHGGTPTCAPCTGGKEIYNDKRHHYAD

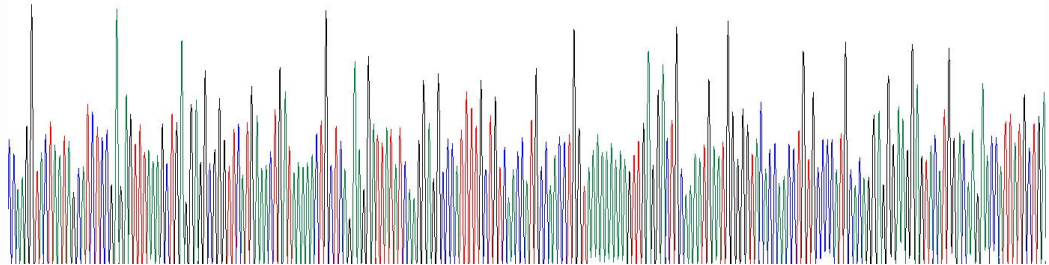


Figure 1. Gene Sequencing (Extract)

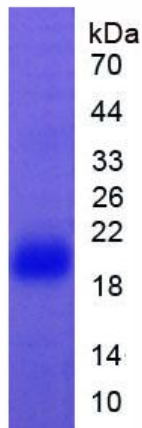


Figure 2. SDS-PAGE