

**RPC477Ga01 100µg**  
**Recombinant Fibrinogen Gamma (FGg)**  
**Organism Species: *Chicken (Gallus)***  
***Instruction manual***

FOR RESEARCH USE ONLY  
NOT FOR USE IN CLINICAL DIAGNOSTIC PROCEDURES

---

12th Edition (Revised in Aug, 2016)

**[ PROPERTIES ]**

**Source:** Prokaryotic expression

**Host:** *E.coli*

**Residues:** Tyr27~Ser435

**Tags:** N-terminal His Tag

**Subcellular Location:** Secreted

**Purity:** > 97%

**Traits:** Freeze-dried powder

**Buffer formulation:** PBS, pH7.4, containing 0.05% SKL, 5% Trehalose.

**Original Concentration:** 80µg/mL

**Applications:** Positive Control; Immunogen; SDS-PAGE; WB.

(May be suitable for use in other assays to be determined by the end user.)

**Predicted isoelectric point:** 5.7

**Predicted Molecular Mass:** 48.2kDa

**Accurate Molecular Mass:** 48kDa as determined by SDS-PAGE reducing conditions.

**[ USAGE ]**

Reconstitute in ddH<sub>2</sub>O to a concentration of 0.1-1.0 mg/mL. Do not vortex.

**[ STORAGE AND STABILITY ]**

**Storage:** Avoid repeated freeze/thaw cycles.

Store at 2-8°C for one month.

Aliquot and store at -80°C for 12 months.

**Stability Test:** The thermal stability is described by the loss rate. The loss rate was determined by accelerated thermal degradation test, that is, incubate the protein at 37°C for 48h, and no obvious degradation and precipitation were observed. The loss rate is less than 5% within the expiration date under appropriate storage condition.

**[ SEQUENCE ]**

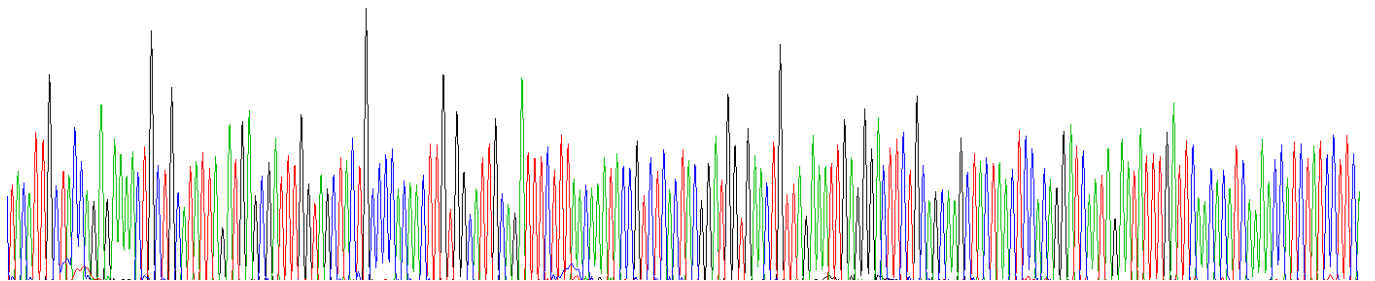
```

                                YIAT RENCCILDER FGSYCPTTCG
IADFFNKYRL TTDGELLEIE GLLQQATNST GSIEYLIQHI KTIYPSEKQT
LPQSIEQLTQ KSKKIIIEEII RYENTILAHE NTIQQLTDMH IMNSNKITQL
KQKIAQLESH CQEPCKDTAE IQETTGRDCQ DIANKGARKS GLYFIKPQKA
KQSFLVYCEI DTYGNGWTVL QRRLDGSEDF RRNWWQYKEG FGHLSPDDTT
EFLWGNEKIH LITTQSTLPY ALRIELEDWS GKKGTADYAV FKVGTEEDKY
RLTYAYFIGG ERGDAFDGFN FGDDPSDKSY TYHNGMRFST FDNDNDFEG
NCAEQDGS GW WMNRCHAGHL NGPYYIGGVY SRDTGTNSYD NGIIWATWRD
RWYSMKKTTM KIIPFNRLSI DGQQHSGGLK QVGDS

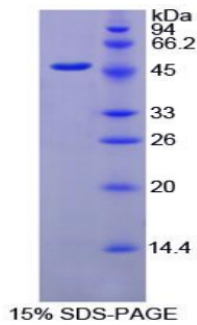
```

**[ IDENTIFICATION ]**

TGATTCTGACGAGGAAACTCGATATTAAGTGAAGGATTTGGTACCTCTCCGCGACACTTCTGGGATTCGAGATTTCCTTACAAATTCGCTCCTACCGGATGCTGACTGTTGAAATTTGGGGACTTCTGCGCAGCTTACTTACTCCGACGGATCAATAGAAATTTGATTTCAGACATCAAAACATCTATCCTTCA  
 VIATRENCCILDERFGSYCPTTCGLIADFFNKYRLTTDGEELLEIEGLLQQATNSTGSIEYLIQHIKTIYP



**Figure. Gene Sequencing (Extract)**



**[ IMPORTANT NOTE ]**

The kit is designed for research use only, we will not be responsible for any issue if the kit was used in clinical diagnostic or any other procedures.