

RPA046Ra01 10µg

Recombinant Glycoprotein 130 (gp130)

Organism Species: *Rattus norvegicus* (Rat)

Instruction manual

FOR IN VITRO USE AND RESEARCH USE ONLY
NOT FOR USE IN CLINICAL DIAGNOSTIC PROCEDURES

12th Edition (Revised in Aug, 2016)

[PROPERTIES]

Source: Prokaryotic expression

Host: *E.coli*

Residues: Glu26~Asp323

Tags: N-terminal His and GST Tag

Subcellular Location: Membrane

Purity: > 90%

Traits: Freeze-dried powder

Buffer formulation: 20mM Tris, 150mM NaCl, pH8.0, containing 0.01% SKL, 5% Trehalose and Proclin300.

Original Concentration: 200µg/mL

Applications: Positive Control; Immunogen; SDS-PAGE; WB.

(May be suitable for use in other assays to be determined by the end user.)

Predicted isoelectric point: 4.9

Predicted Molecular Mass: 63.6kDa

Accurate Molecular Mass: 64kDa as determined by SDS-PAGE reducing conditions.

[USAGE]

Reconstitute in 20mM Tris, 150mM NaCl (pH8.0) to a concentration of 0.1-1.0 mg/mL. Do not vortex.

[STORAGE AND STABILITY]

Storage: Avoid repeated freeze/thaw cycles.

Store at 2-8°C for one month.

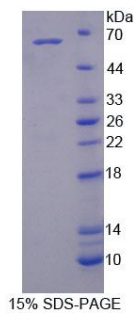
Aliquot and store at -80°C for 12 months.

Stability Test: The thermal stability is described by the loss rate. The loss rate was determined by accelerated thermal degradation test, that is, incubate the protein at 37°C for 48h, and no obvious degradation and precipitation were observed. The loss rate is less than 5% within the expiration date under appropriate storage condition.

[SEQUENCE]

EPCGY IYPEFPVVQR GSNFTATCVL
KEKCLQVYSV NATYIVWKTN HVAVPKEQVT VINRTASSVT FTDVVFQNVQ
LTCNILSFGQ IEQNVYGITI LSGYPPDIPT NLSCIVNEGK NMLCQLDPGR
ETYLETNYTL KSEWATEKFP DCRTKHGTSS CMMGYTPIYF VNIEVWVEAE
NALGNVSSEP INFDPVDKVK PSPPHNLSVT NSEELSSILK LAWVNSGLDS
ILRLKSDIQY RTKDASTWIQ VPLEDTVSPR TSFTVQDLKP FTEYVFRIRS
IKENGGYWS DWSEEASGTT YED

[IDENTIFICATION]



[IMPORTANT NOTE]

The kit is designed for in vitro and research use only, we will not be responsible for any issue if the kit was used in clinical diagnostic or any other procedures.