

RPA711Hu04 50µg

Recombinant Heparanase (HPSE)

Organism Species: *Homo sapiens (Human)*

Instruction manual

FOR RESEARCH USE ONLY

NOT FOR USE IN CLINICAL DIAGNOSTIC PROCEDURES

13th Edition (Revised in Aug, 2023)

[PROPERTIES]

Source: Prokaryotic expression

Host: *E.coli*

Residues: Leu151~Ile543

Tags: N-terminal His Tag

Subcellular Location: Membrane, Nucleus, Secreted, Lysosome

Purity: > 90%

Traits: Freeze-dried powder

Buffer formulation: 100mMNaHCO₃, 500mMNaCl, pH8.3, containing 0.01% SKL, 5% Trehalose.

Original Concentration: 400µg/mL

Applications: Positive Control; Immunogen; SDS-PAGE; WB.

(May be suitable for use in other assays to be determined by the end user.)

Predicted isoelectric point: 10.0

Predicted Molecular Mass: 48.0kDa

Accurate Molecular Mass: 48kDa as determined by SDS-PAGE reducing conditions.

[USAGE]

Reconstitute in ddH₂O to a concentration of 0.1-1.0 mg/mL. Do not vortex.

[STORAGE AND STABILITY]

Storage: Avoid repeated freeze/thaw cycles.

Store at 2-8°C for one month.

Aliquot and store at -80°C for 12 months.

Stability Test: The thermal stability is described by the loss rate. The loss rate was determined by accelerated thermal degradation test, that is, incubate the protein at 37°C for 48h, and no obvious degradation and precipitation were observed. The loss rate is less than 5% within the expiration date under appropriate storage condition.

[SEQUENCE]

LLREHYQKKF KNSTYSRSSV DVLYTFANCS GLDLIFGLNA LLRTADLQWN
 SSNAQLLLDY CSSKGYNISW ELGNPNLSFL KKADIFINGS QLGEDFIQLH
 KLLRKSTFKN AKLYGPDVQQ PRRKTAKMLK SFLKAGGEVI DSVTWHHYL
 NGRTATKEDF LNPVDLDIFI SSVQKVFQVV ESTRPGKKVW LGETSSAYGG
 GAPLLSDTFA AGFMWLDKLG LSARMGIEVV MRQVFFGAGN YHLVDENFDP
 LPDYWLSLLF KKLVGTKVLM ASVQGSKRRK LRVYLHCTNT DNPRYKEGDL
 TLYAINLHNV TKYLRLPYPF SNKQVDKYLL RPLGPHGLLS KSVQLNGLTL
 KMVDDQTLPP LMEKPLRPGS SLGLPAFSYS FFVIRNAKVA ACI

[IDENTIFICATION]

CGGATGCTCTCTCGGACCTACGAAAGTCAAGAGCGCCCTCTAGAGCGCTGAGAGCTGATGCTTTTGAACCTCGAGGCTGGACTTGACTTTGGCTAAATGCGTATTAGAGCGGCGATTGGAGTGGACAGTCTAATGCTCGTGGCTGGCTACGCGCTCGAAGGGATACATTCTTGGWCTAGCGAAGGCTAAGCTTCC

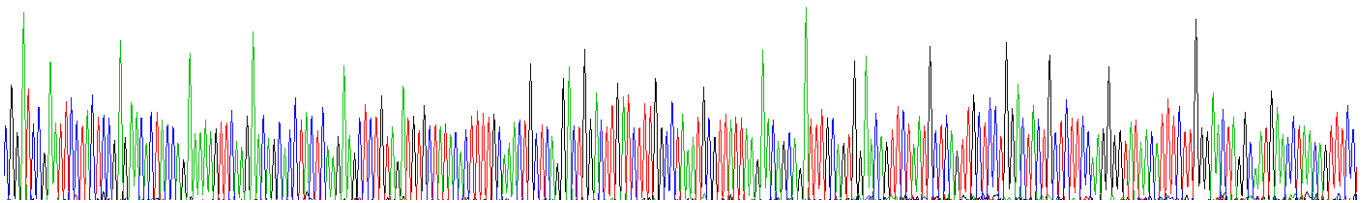


Figure . Gene Sequencing (extract)

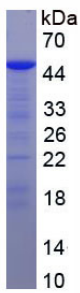


Figure. SDS-PAGE

[IMPORTANT NOTE]

The kit is designed for research use only, we will not be responsible for any issue if the kit was used in clinical diagnostic or any other procedures.