

**RPA545Hu01 200µg**

**Recombinant Immunoglobulin E (IgE)**

**Organism Species: *Homo sapiens* (Human)**

***Instruction manual***

FOR RESEARCH USE ONLY

NOT FOR USE IN CLINICAL DIAGNOSTIC PROCEDURES

---

12th Edition (Revised in Aug, 2016)

**[ PROPERTIES ]**

**Source:** Prokaryotic expression

**Host:** *E.coli*

**Residues:** Ala1~Lys428

**Tags:** N-terminal His Tag

**Subcellular Location:** Membrane, Secreted

**Purity:** > 90%

**Traits:** Freeze-dried powder

**Buffer formulation:** 20mM Tris, 150mM NaCl, pH8.0, containing 0.01% skl, 5%Trehalose.

**Original Concentration:** 350µg/mL

**Applications:** Positive Control; Immunogen; SDS-PAGE; WB.

(May be suitable for use in other assays to be determined by the end user.)

**Predicted isoelectric point:** 8.4

**Predicted Molecular Mass:** 50.7kDa

**Accurate Molecular Mass:** 51kDa as determined by SDS-PAGE reducing conditions.

**[ USAGE ]**

Reconstitute in 20mM Tris, 150mM NaCl (pH8.0) to a concentration of 0.1-1.0 mg/mL. Do not vortex.

**[ STORAGE AND STABILITY ]**

**Storage:** Avoid repeated freeze/thaw cycles.

Store at 2-8°C for one month.

Aliquot and store at -80°C for 12 months.

**Stability Test:** The thermal stability is described by the loss rate. The loss rate was determined by accelerated thermal degradation test, that is, incubate the protein at 37°C for 48h, and no obvious degradation and precipitation were observed. The loss rate is less than 5% within the expiration date under appropriate storage condition.

**[ SEQUENCE ]**

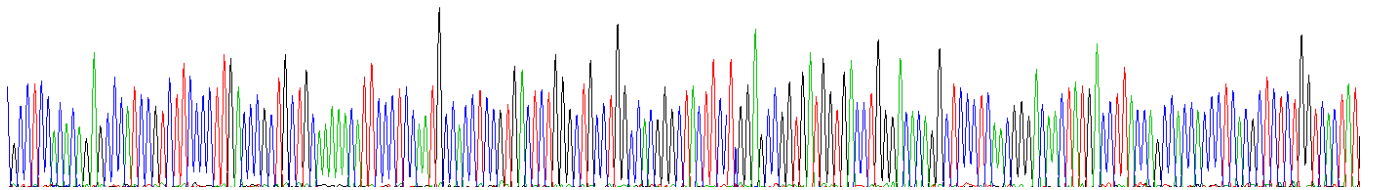
```

ASTQSPSVFP LTRCCKNIPS NATSVTLGCL ATGYFPEPVM VTWDTGSLNG
TTMTLPATTL TLSGHYATIS LLTVSGAWAK QMFTCRVAHT PSSTDWVDNK
TFSVCSRDFP PPTVKILQSS CDGGGHFPPT IQLLCLVSGY TPGTINITWL
EDGQVMDVDL STASTTQEGE LASTQSELT SQKHWSLDR YTCQVTYQGH
TFEDSTKKCA DSNPRGVSAY LSRPSPFDLF IRKSPTITCL VVDLAPSKGT
VNLTWSRASG KPVNHSTRKE EKQRNGTLTV TSTLPVGTRD WIEGETYQCR
VTHPHLPRAL MRSTTKTSGP RAAPEVYFAF TPEWPGSRDK RTLACLIQNF
MPEDISVQWL HNEVQLPDAR HSTTQPRKTK GSGFFVFSRL EVTRAWEQK
DEFICRAVHE AASPSQTVQR AVSVNPGK
  
```

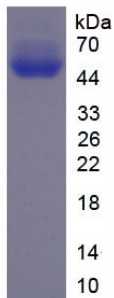
**[ IDENTIFICATION ]**

```

TGCCTCCACAGAGCCATCCGCTCTCCCTTGAACCGCTGCTGCAAAACATTCCCTCCATGCCAOCCTCCGTGACTCTGGGCTGCTTGGCCAGGGCTACTTCTGGAGCCGGTGTGGTGAACCTGGGACAGCCCTCCCTCAAGCGGCAACTATGAOCTTACCGAGCCACCCCTCAOCTCTCTGGTCACTAT
A S T Q S P S V F P L T R C C K N I P S N A T S V T L G C L A T G Y F F E P V M V T W D T G S L N G T T M T L P A T T L T L S G H Y ,
  
```



**Figure. Gene Sequencing (Extract)**



**Figure. SDS-PAGE**

**[ IMPORTANT NOTE ]**

The kit is designed for research use only, we will not be responsible for any issue if the kit was used in clinical diagnostic or any other procedures.