

RPA052Hu01 10µg

Recombinant Insulin Like Growth Factor Binding Protein 1 (IGFBP1)

Organism Species: *Homo sapiens (Human)*

Instruction manual

FOR RESEARCH USE ONLY

NOT FOR USE IN CLINICAL DIAGNOSTIC PROCEDURES

13th Edition (Revised in Aug, 2023)

[PROPERTIES]

Source: Prokaryotic expression

Host: *E.coli*

Residues: Asp159~Pro249

Tags: N-terminal His and GST Tag

Subcellular Location: Secreted

Purity: > 90%

Traits: Freeze-dried powder

Buffer formulation: PBS, pH7.4, containing 0.01% SKL, 5% Trehalose .

Original Concentration: 80µg/mL

Applications: Positive Control; Immunogen; SDS-PAGE; WB.

(May be suitable for use in other assays to be determined by the end user.)

Predicted isoelectric point: 7.8

Predicted Molecular Mass: 43.4kDa

Accurate Molecular Mass: 43kDa as determined by SDS-PAGE reducing conditions.

[USAGE]

Reconstitute in ddH₂O to a concentration of 0.1-1.0 mg/mL. Do not vortex.

[STORAGE AND STABILITY]

Storage: Avoid repeated freeze/thaw cycles.

Store at 2-8°C for one month.

Aliquot and store at -80°C for 12 months.

Stability Test: The thermal stability is described by the loss rate. The loss rate was determined by accelerated thermal degradation test, that is, incubate the protein at 37°C for 48h, and no obvious degradation and precipitation were observed. The loss rate is less than 5% within the expiration date under appropriate storage condition.

[SEQUENCE]

DG SKALHVTNIK KWKEPCRIEL YRVVESLAKA QETSGEEISK
FYLPNCNKG FYHSRQCETS MDGEAGLCWC VYPWNGKRIP GSPEIRGDP

[IDENTIFICATION]

G A A T T O G A T G G C T G A A G G C T C T C A T G T C A C C A A C A T C A A A A A T G G A A G G A G C C C T G C C G A A T A G A A C T C T A C A G A G T O G T A G A G A G T T T A G C C A A G G C A C A G G A G A C A T C A G G A G A A G A A A T T T C C A A A T T T T A C C T G C C A A A C T G C A A C A A G A A T G G A T T T T A T C A C A T

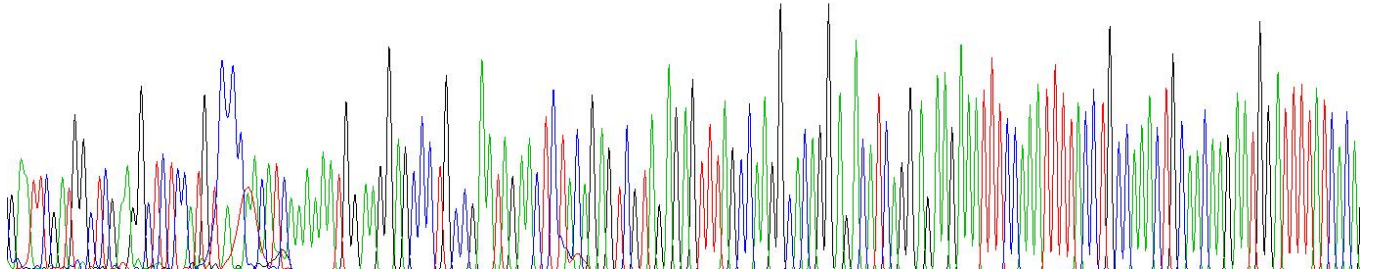
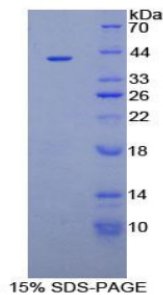


Figure . Gene Sequencing (extract)



[IMPORTANT NOTE]

The kit is designed for research use only, we will not be responsible for any issue if the kit was used in clinical diagnostic or any other procedures.