

**RPX262Mu01 100µg**

**Recombinant Interleukin 23 (IL23)**

**Organism Species: *Mus musculus* (Mouse)**

***Instruction manual***

FOR RESEARCH USE ONLY

NOT FOR USE IN CLINICAL DIAGNOSTIC PROCEDURES

---

12th Edition (Revised in Aug, 2016)

**[ PROPERTIES ]**

**Source:** Prokaryotic expression

**Host:** *E.coli*

**Residues:** Met23~Ser335+IGSGSSRGGSGSGGSGGGGSK+Leu20~Ala196

**Tags:** N-terminal His Tag

**Subcellular Location:** Secreted

**Purity:** > 95%

**Traits:** Freeze-dried powder

**Buffer formulation:** 20mM Tris, 150mM NaCl, pH8.0, containing 0.01% SKL, 5% Trehalose.

**Original Concentration:** 200µg/mL

**Applications:** Positive Control; Immunogen; SDS-PAGE; WB.

(May be suitable for use in other assays to be determined by the end user.)

**Predicted isoelectric point:** 6.5

**Predicted Molecular Mass:** 60.9kDa

**Accurate Molecular Mass:** 62kDa as determined by SDS-PAGE reducing conditions.

**[ USAGE ]**

Reconstitute in 20mM Tris, 150mM NaCl (pH8.0) to a concentration of 0.1-1.0 mg/mL. Do not vortex.

**[ STORAGE AND STABILITY ]**

**Storage:** Avoid repeated freeze/thaw cycles.

Store at 2-8°C for one month.

Aliquot and store at -80°C for 12 months.

**Stability Test:** The thermal stability is described by the loss rate. The loss rate was determined by accelerated thermal degradation test, that is, incubate the protein at 37°C for 48h, and no obvious degradation and precipitation were observed. The loss rate is less than 5% within the expiration date under appropriate storage condition.

**[ SEQUENCE ]**

```

MWELEKDV YVVEVDWTPD APGETVNLTC
DTPEEDDITW TSDQRHGVIG SGKTLTITVK EFLDAGQYTC HKGGETLSHS
HLLLHKKENG IWSTEILKNF KNKTFLKCEA PNYSGRFTCS WLVRNMDLK
FNIKSSSSSP DSRAVTCGMA SLSAEKVTLQ QRDYKYSVS CQEDVTCPTA
EETLPIELAL EARQQNKYEN YSTSFFIRDI IKPDPPKNLQ MKPLKNSQVE
VSWEYPDSWS TPHYFSLKF FVRIQRKKEK MKETEEGCNQ KGAFLEKTS
TEVQCKGGNV CVQAQDRYYN SSCSKWACVP CRVRS
IGSGSSRGGSGSGGGGGGSK

L AVPRSSSPDW AQCQQLSRNL CMLAWNAHAP
AGHMNLLREE EDEETKNNVP RIQCEDGCDP QGLKDNSQFC LQRIRQGLAF
YKHLLDSDIF KGEPALLPDS PMEQLHTSLL GLSQLLPED HPRETQQMPS
LSSSQWQRP LLRSKILRSL QAFLAIAARV FAHGAATLTE PLVPTA

```

**[ IDENTIFICATION ]**

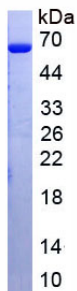


Figure. SDS-PAGE

**[ IMPORTANT NOTE ]**

The kit is designed for research use only, we will not be responsible for any issue if the kit was used in clinical diagnostic or any other procedures.