

**RPA384Hu01 200µg**

**Recombinant Interleukin 23 Subunit Alpha (IL23a)**

**Organism Species: *Homo sapiens* (Human)**

***Instruction manual***

FOR RESEARCH USE ONLY

NOT FOR USE IN CLINICAL DIAGNOSTIC PROCEDURES

---

13th Edition (Revised in Aug, 2023)

**[ PROPERTIES ]**

**Source:** Prokaryotic expression

**Host:** *E.coli*

**Residues:** Arg20~Pro189

**Tags:** N-terminal His Tag

**Subcellular Location:** Secreted

**Purity:** > 80%

**Traits:** Freeze-dried powder

**Buffer formulation:** PBS, pH7.4, containing 0.01% SKL, 5% Trehalose .

**Original Concentration:** 100µg/mL

**Applications:** Positive Control; Immunogen; SDS-PAGE; WB.

(May be suitable for use in other assays to be determined by the end user.)

**Predicted isoelectric point:** 6.3

**Predicted Molecular Mass:** 22.4kDa

**Accurate Molecular Mass:** 24kDa as determined by SDS-PAGE reducing conditions.

**[ USAGE ]**

Reconstitute in 10mM PBS (pH7.4) to a concentration of 0.1-1.0 mg/mL. Do not vortex.

**[ STORAGE AND STABILITY ]**

**Storage:** Avoid repeated freeze/thaw cycles.

Store at 2-8°C for one month.

Aliquot and store at -80°C for 12 months.

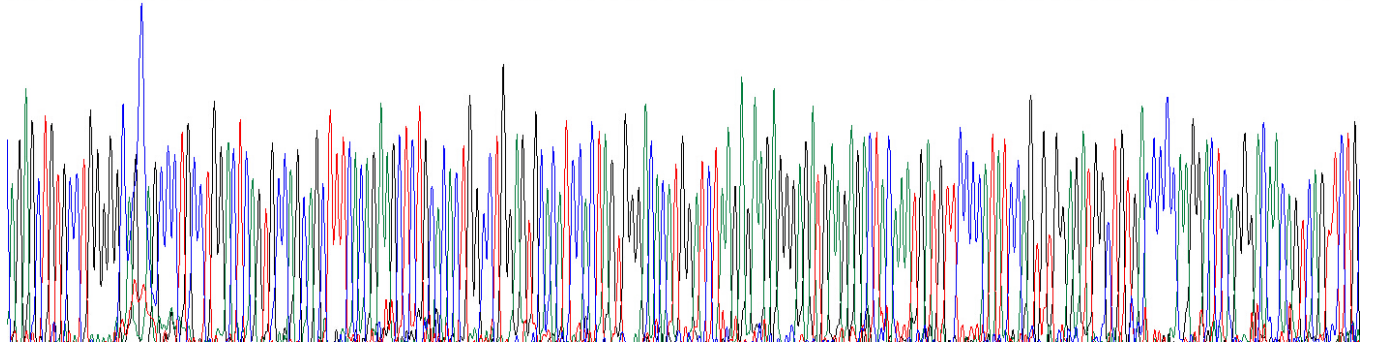
**Stability Test:** The thermal stability is described by the loss rate. The loss rate was determined by accelerated thermal degradation test, that is, incubate the protein at 37°C for 48h, and no obvious degradation and precipitation were observed. The loss rate is less than 5% within the expiration date under appropriate storage condition.

**[ SEQUENCE ]**

R AVPGGSSPAW TQCQQLSQKL CTLAWSAHPL  
 VGHMDLREEG DEETTNDVPH IQCGDGDQPQ GLRDNSQFCL QRIHQGLIFY  
 EKLLGSDIFT GEPSLLPDSP VGQLHASLLG LSQLLQPEGH HWETQQIPSL  
 SPSQPWQRL LRFKILRSLQ AFVAVAAARVF AHGAATLSP

**[ IDENTIFICATION ]**

TAGACTGTGCTGGGGGAGCAGCCCTGCTGGACTGAGTGCAGCAGCTTTTCAGAGAGCTCTGCACACTGGCCCTGGAGTGCACATCCACTAGTGGACACATGGATCTAAAGAGAGAGGGGATGAAAGAGACTACAAATGATGTTCCCAATATCCAGTGTGGAGATGGCTGTGACCCCAAGGACTCAGGGAGACAGTCAAGTCTG  
 R A V P G G S S P A W T Q C Q Q L S Q K L C T L A W S A H P L V G H D L R E E G D E E T T H D V P H I Q C G D G C D P Q G L R D H S Q F C



**Figure . Gene Sequencing (extract)**

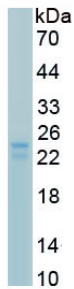


Figure. SDS-PAGE

**[ IMPORTANT NOTE ]**

The kit is designed for research use only, we will not be responsible for any issue if the kit was used in clinical diagnostic or any other procedures.