

RPD004Hu01 100µg

Recombinant Isoleucyl tRNA Synthetase (IARS)

Organism Species: *Homo sapiens* (Human)

Instruction manual

FOR RESEARCH USE ONLY

NOT FOR USE IN CLINICAL DIAGNOSTIC PROCEDURES

13th Edition (Revised in Aug, 2023)

[PROPERTIES]

Source: Prokaryotic expression

Host: *E.coli*

Residues: Met1~Arg500

Tags: N-terminal His Tag

Subcellular Location: Cytoplasm

Purity: > 97%

Traits: Freeze-dried powder

Buffer formulation: 20mM Tris, 150mM NaCl, pH8.0, containing 0.01% skl, 5%Trehalose.

Original Concentration: 250µg/mL

Applications: Positive Control; Immunogen; SDS-PAGE; WB.

(May be suitable for use in other assays to be determined by the end user.)

Predicted isoelectric point: 5.6

Predicted Molecular Mass: 61.7KDa

Accurate Molecular Mass: 62kDa as determined by SDS-PAGE reducing conditions.

[USAGE]

Reconstitute in 20mM Tris, 150mM NaCl (pH8.0) to a concentration of 0.1-1.0 mg/mL. Do not vortex.

[STORAGE AND STABILITY]

Storage: Avoid repeated freeze/thaw cycles.

Store at 2-8°C for one month.

Aliquot and store at -80°C for 12 months.

Stability Test: The thermal stability is described by the loss rate. The loss rate was determined by accelerated thermal degradation test, that is, incubate the protein at 37°C for 48h, and no obvious degradation and precipitation were observed. The loss rate is less than 5% within the expiration date under appropriate storage condition.

[SEQUENCE]

```

MLQQVPENIN  FPAEEKILE  FWTEFNCFQE  CLKQSKHKPK  FTFYDGPPFA
TGLPHYGHIL  AGTIKDIVTR  YAHQSGFHVD  RRFQWDCHGL  PVEYEIDKTL
GIRGPEDVAK  MGITEYNNQC  RAIVMRYSAE  WKSTVSRLGR  WIDFDNDYKT
LYPQFMESVW  WVFKQLYDKG  LVYRGVKVMP  FSTACNTPLS  NFESHQNYKD
VQDPSVFVTF  PLEEDETVSL  VAWTTTPWTL  PSNLAVCVNP  EMQYVKIKDV
ARGRLILME  ARLSALYKLE  SDYEILERFP  GAYLKGKKYR  PLFDYFLKCK
ENGAFTVLVD  NYVKEEETG  VVHQAPYFGA  EDYRVCMDFN  IIRKDSL PVC
PVDASGCF TT  EVTDFAGQYV  KDADKSIIRT  LKEQGRL LVA  TTFTHSYPFC
WRSDTPLIYK  AVPSWFVRVE  NMVDQLLRNN  DLCYWVPELV  REKRFGNWLK
DARDWTISR N  RYWGTP IPLW  VSDDFEEVVC  IGSVAELEEL  SGAKISDLHR
    
```

[IDENTIFICATION]

ATGGATCCGAATTCATGCTCTGACCAAGTTCCGGAAACATATAATTTTCCCTGACGAGGAGGAAATCTTGGAGTTTTGGCTGAAATTAATTGTTTTTTCAGGAACTCTTAAAGCAATCAAAACATAAAACAAATTTTACCTTCTATGATGGTCTCTCTTTTGCAACTGGACTGCTCTACTATGGACATATACTTGGGGTCAATTAAGAT

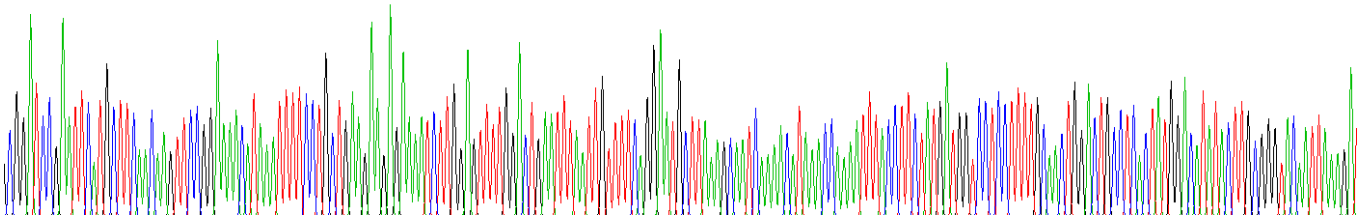


Figure . Gene Sequencing (extract)

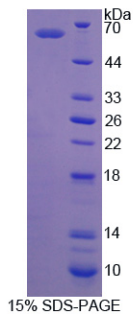


Figure. SDS-PAGE

[IMPORTANT NOTE]

The kit is designed for research use only, we will not be responsible for any issue if the kit was used in clinical diagnostic or any other procedures.