

**RPA101Mu01 50µg**

**Recombinant Matrix Metalloproteinase 3 (MMP3)**

**Organism Species: *Mus musculus* (Mouse)**

***Instruction manual***

FOR RESEARCH USE ONLY

NOT FOR USE IN CLINICAL DIAGNOSTIC PROCEDURES

---

12th Edition (Revised in Aug, 2016)

**[ PROPERTIES ]**

**Source:** Prokaryotic expression

**Host:** *E.coli*

**Residues:** Phe100~Cys477

**Tags:** N-terminal His Tag

**Subcellular Location:** Secreted, Extracellular matrix

**Purity:** > 97%

**Traits:** Freeze-dried powder

**Buffer formulation:** 20mM Tris, 150mM NaCl, pH8.0, containing 1mM EDTA, 1mM DTT, 0.01% SKL, 5% Trehalose and Proclin300.

**Original Concentration:** 200µg/mL

**Applications:** Positive Control; Immunogen; SDS-PAGE; WB.

(May be suitable for use in other assays to be determined by the end user.)

**Predicted isoelectric point:** 5.9

**Predicted Molecular Mass:** 46.3kDa

**Accurate Molecular Mass:** 46kDa as determined by SDS-PAGE reducing conditions.

**[ USAGE ]**

Reconstitute in 20mM Tris, 150mM NaCl (pH8.0) to a concentration of 0.1-1.0 mg/mL. Do not vortex.

**[ STORAGE AND STABILITY ]**

**Storage:** Avoid repeated freeze/thaw cycles.

Store at 2-8°C for one month.

Aliquot and store at -80°C for 12 months.

**Stability Test:** The thermal stability is described by the loss rate. The loss rate was determined by accelerated thermal degradation test, that is, incubate the protein at 37°C for 48h, and no obvious degradation and precipitation were observed. The loss rate is less than 5% within the expiration date under appropriate storage condition.

**[ SEQUENCE ]**

F

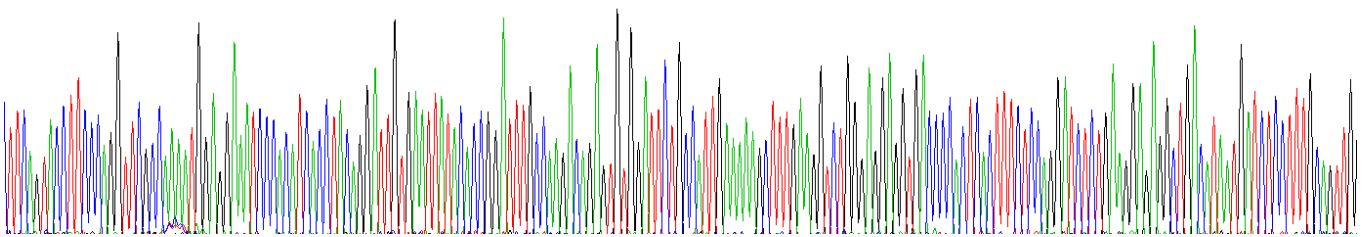
```

STFPGSPKWR KSHITYRIVN YTPDLPRQSV DSAIEKALKV WEEVTPLTFS
RISEGEADIM ISFAVGEHGD FVPFDGPGTV LAHAYAPGPG INGDAHFDSD
ERWTEDEVGT NLFLVAHEL GHSLGLYHSA KAEALMYPVY KSSTDLSRFH
LSQDDVDGIQ SLYGTPTASP DVLVVPKSN SLEPETSPMC SSTLFFDAVS
TLRGEVLFFK DRHFWRKSLR TPEPEFY LIS SFWPSLPSNM DAAVEVTNRD
TVFIFKGNQF WAIRGHEELA GYPKSIHTLG LPATVKKIDA AISNKEKRKT
YFFVEDKYWR FDEKKQSMEP GFPRKIAEDF PGVDSRVDV FEAFGFLYFF
SGSSQLEFDP NAKKVTHILK SNSWFNC
    
```

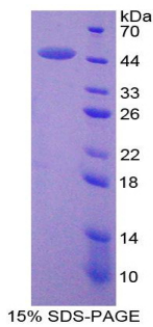
**[ IDENTIFICATION ]**

```

:TTGAGTACCTTCCAGGTTGGCAAAATGGAGGAATCCACATCACTCAGGATTGTGAAATTATACACCGGATTTCACAGCAGAGTGTGGATTCTGCCATTGAAAAAGCTTTGAGGCTGGGAGGAGTGAOCCACTCACTTTCTCCAGGATCTCTGAAGGAGGCTGACATAATGATCTCTTCCAGTTG
FSTFPGSPKWRKSHITYRIVNYTPDLPRQSVDSAIEKALKVWEEVTPLTFSRISSEGEADIMISFAVG
    
```



**Figure. Gene Sequencing (Extract)**



**[ IMPORTANT NOTE ]**

The kit is designed for research use only, we will not be responsible for any issue if the kit was used in clinical diagnostic or any other procedures.