

RPA101Ra02 50µg
Recombinant Matrix Metalloproteinase 3 (MMP3)
Organism Species: Rattus norvegicus (Rat)
Instruction manual

FOR IN VITRO USE AND RESEARCH USE ONLY
NOT FOR USE IN CLINICAL DIAGNOSTIC PROCEDURES

12th Edition (Revised in Aug, 2016)

[**PROPERTIES**]

Source: Prokaryotic expression.

Host: *E. coli*

Residues: Phe98~Cys475

Tags: N-terminal His-Tag

Tissue Specificity: Kidney.

Subcellular Location: Secreted, extracellular space, extracellular matrix.

Purity: >90%

Traits: Freeze-dried powder

Buffer formulation: 100mM NaHCO₃, 500mM NaCl, pH8.3, containing 1mM EDTA, 1mM DTT, 0.01% sarcosyl, 5%Trehalose and Proclin300.

Original Concentration: 200ug/mL

Applications: SDS-PAGE; WB; ELISA; IP; CoIP; Purification; Amine Reactive Labeling.

(May be suitable for use in other assays to be determined by the end user.)

Predicted isoelectric point: 5.5

Predicted Molecular Mass: 46.2kDa

Accurate Molecular Mass: 55kDa as determined by SDS-PAGE reducing conditions.

Phenomenon explanation:

The possible reasons that the actual band size differs from the predicted are as follows:

1. Splice variants: Alternative splicing may create different sized proteins from the same gene.
2. Relative charge: The composition of amino acids may affects the charge of the protein.
3. Post-translational modification: Phosphorylation, glycosylation, methylation etc.
4. Post-translation cleavage: Many proteins are synthesized as pro-proteins, and then cleaved to give the active form.
5. Polymerization of the target protein: Dimerization, multimerization etc.

[**USAGE**]

Reconstitute in 100mM NaHCO₃, 500mM NaCl (pH8.3) to a concentration of 0.1-1.0 mg/mL. Do not vortex.

[STORAGE AND STABILITY]

Storage: Avoid repeated freeze/thaw cycles.

Store at 2-8°C for one month.

Aliquot and store at -80°C for 12 months.

Stability Test: The thermal stability is described by the loss rate. The loss rate was determined by accelerated thermal degradation test, that is, incubate the protein at 37°C for 48h, and no obvious degradation and precipitation were observed. The loss rate is less than 5% within the expiration date under appropriate storage condition.

[SEQUENCE]

FST

FPGSPKWRKN HISYRIVNYT LDLPRESVDS AIERALKVWE EVTPLTFSRI
 SEGEADIMIS FAVEEHGDFI PFDGPGMVLA HAYAPGPGTN GDAHFDDEE
 WTDDVTGTNL FLVAAHELGH SLGLFHSANA EALMPVYKS STDLARFHL
 QDDVDGIQSL YGPPTESPDV LVVPTKNSL DPETLPMCSS ALSFDAVSTL
 RGEVLFFKDR HFWRKSLRTP EPGFYLISSF WPSLPSNMDA AYEVTNRDTV
 FILKGNQIWA IRGHEELAGY PKSIHTLGLP ETVQKIDAAI SLKDQKITYF
 FVEDKFWRFD EKKQSMDFE PRKIAENFPG IGTKVDVAFE AFGFLYFFSG
 SSQLEFDPNA GKVTHILKSN SWFNC

[IDENTIFICATION]

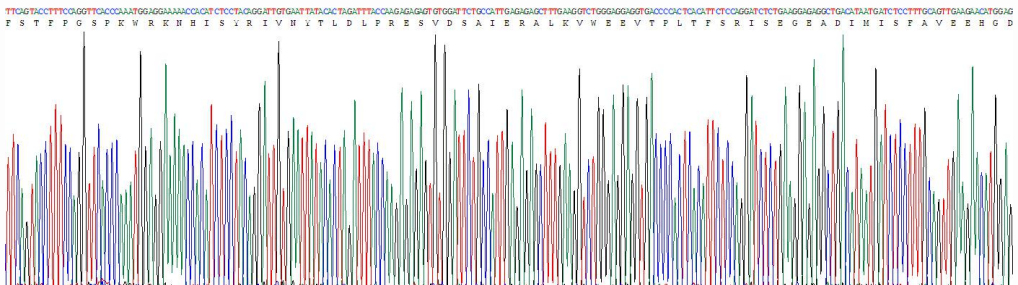


Figure 1. Gene Sequencing (Extract)

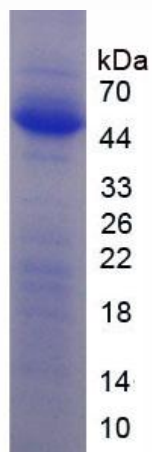


Figure 2. SDS-PAGE