

RPB317Hu02 200µg

Recombinant Perforin 1 (PRF1)

Organism Species: *Homo sapiens (Human)*

Instruction manual

FOR RESEARCH USE ONLY

NOT FOR USE IN CLINICAL DIAGNOSTIC PROCEDURES

13th Edition (Revised in Aug, 2023)

[PROPERTIES]

Source: Prokaryotic expression

Host: *E.coli*

Residues: Pro22~Trp555

Tags: N-terminal His Tag

Subcellular Location: Membrane, Secreted, Endosome

Purity: > 80%

Traits: Freeze-dried powder

Buffer formulation: 20mM Tris, 150mM NaCl, pH8.0, containing 0.01% skl, 5%Trehalose.

Original Concentration: 180µg/mL

Applications: Positive Control; Immunogen; SDS-PAGE; WB.

(May be suitable for use in other assays to be determined by the end user.)

Predicted isoelectric point: 7.8

Predicted Molecular Mass: 62.9kDa

Accurate Molecular Mass: 63kDa as determined by SDS-PAGE reducing conditions.

[USAGE]

Reconstitute in 20mM Tris, 150mM NaCl (pH8.0) to a concentration of 0.1-1.0 mg/mL. Do not vortex.

[STORAGE AND STABILITY]

Storage: Avoid repeated freeze/thaw cycles.

Store at 2-8°C for one month.

Aliquot and store at -80°C for 12 months.

Stability Test: The thermal stability is described by the loss rate. The loss rate was determined by accelerated thermal degradation test, that is, incubate the protein at 37°C for 48h, and no obvious degradation and precipitation were observed. The loss rate is less than 5% within the expiration date under appropriate storage condition.

[SEQUENCE]

```

PCHTAARSE CKRSHKFVPG AWLAGEGVDV
TSLRRSGSFP VDTQRFLRPD GTCTLCENAL QEGTLQRLPL ALTNWRAQGS
GCQRHVTRAK VSSTEAVARD AARSIRNDWK VGLDVT PKPT SNVHVS VAGS
HSQAANFAAQ KTHQDQYSFS TDTVECRFYS FHVVHTPPLH PDFKRALGDL
PHHFNASTQP AYLRLISNYG THFIRAVELG GRISALTALR TCELALEGLT
DNEVEDCLTV EAQVNIGIHG SISAEAKACE EKKKKHKMTA SFHQTYRERH
SEVVGGHHTS INDLLFGIQA GPEQYSAWVN SLPGSPGLVD YTLEPLHVLL
DSQDPRREAL RRALSQYLTD RARWRDCSRP CPPGRQKSPR DPCQCVCHGS
AVTTQDCCPR QRGLAQLEVT FIQAWGLWGD WFTATDAYVK LFFGGQELRT
STVWDNNNPI WSVRLDFGDV LLATGGPLRL QVWDQDSGRD DDLLGTCDQA
PKSGSHEVRC NLNHGHLKFR YHARCLPHLG GGTCLDYVPQ MLLGEPPGNR
SGAVW
    
```

[IDENTIFICATION]

ATTCCTGCGCACACAGCCGACGCTCAGAGTCCAAAGCCAGCCACAAAGTTCTGCTGGTGCATGCTGCGCGGGAGGGTGTGGACGTGACCCAGCCTCCGCGCTCGGCTCTCCAGTGGACACACAAAAGTTCTCGCGCCGACGGCACCTGCACCTCTGTGAAAATGG

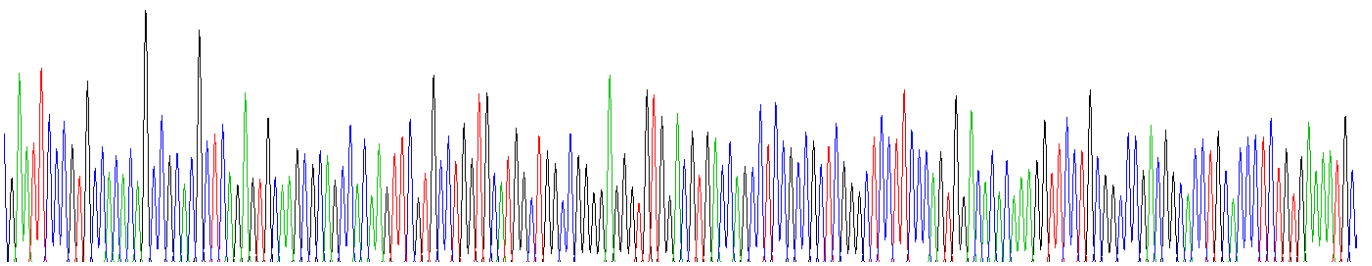


Figure . Gene Sequencing (extract)

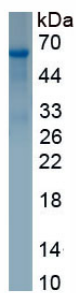


Figure. SDS-PAGE

[IMPORTANT NOTE]

The kit is designed for research use only, we will not be responsible for any issue if the kit was used in clinical diagnostic or any other procedures.