

RPC756Hu01 50µg

Recombinant Prosaposin (PSAP)

Organism Species: *Homo sapiens (Human)*

Instruction manual

FOR RESEARCH USE ONLY

NOT FOR USE IN CLINICAL DIAGNOSTIC PROCEDURES

13th Edition (Revised in Aug, 2023)

[PROPERTIES]

Source: Prokaryotic expression

Host: *E.coli*

Residues: Gly17~Asn524

Tags: N-terminal His Tag

Subcellular Location: Lysosome

Purity: > 97%

Traits: Freeze-dried powder

Buffer formulation: PBS, pH7.4, containing 0.01% SKL, 5% Trehalose .

Original Concentration: 300µg/mL

Applications: Positive Control; Immunogen; SDS-PAGE; WB.

(May be suitable for use in other assays to be determined by the end user.)

Predicted isoelectric point: 5.1

Predicted Molecular Mass: 60.2kDa

Accurate Molecular Mass: 60kDa as determined by SDS-PAGE reducing conditions.

[USAGE]

Reconstitute in 10mM PBS (pH7.4) to a concentration of 0.1-1.0 mg/mL. Do not vortex.

[STORAGE AND STABILITY]

Storage: Avoid repeated freeze/thaw cycles.

Store at 2-8°C for one month.

Aliquot and store at -80°C for 12 months.

Stability Test: The thermal stability is described by the loss rate. The loss rate was determined by accelerated thermal degradation test, that is, incubate the protein at 37°C for 48h, and no obvious degradation and precipitation were observed. The loss rate is less than 5% within the expiration date under appropriate storage condition.

[SEQUENCE]

	GPVL	GLKECTRGSA	VWCQN VKTAS	DCGAVKHCLQ
TVWNKPTVKS	LPCDICKDVV	TAAGDMLKDN	ATEEEILVYL	EKTCDWLPKP
NMSASCKEIV	DSYLPVILDI	IKGEMSRPGE	VCSALNLCES	LQKHLAELNH
QKQLESNKIP	ELDMTEVVAP	FMANIPLLLY	PQDGRSKPQ	PKDNGDVCQD
CIQMVTDIQT	AVRTNSTFVQ	ALVEHVKEEC	DRLGPGMADI	CKNYISQYSE
IAIQMMMHHMQ	PKEICALVGF	CDEVKEMPMQ	TLVPAKVASK	NVIPALELVE
PIKKHEVPAK	SDVYCEVCEF	LVKEVTKLID	NNKTEKEILD	AFDKMCSKLP
KSLSEECQEV	VDTYGSSILS	ILLEEVSPEL	VCSMLHLCSG	TRLPALTVHV
TQPKDGGFCE	VCKKLVGYLD	RNLEKNSTKQ	EILAALEKGC	SFLPDYPYQKQ
CDQFVAEYEP	VLIEILVEVM	DPSFVCLKIG	ACPSAHKPLL	GTEKCIWGPS
YWCQNTETAA	QCNAVEHCKR	HVWN		

[IDENTIFICATION]

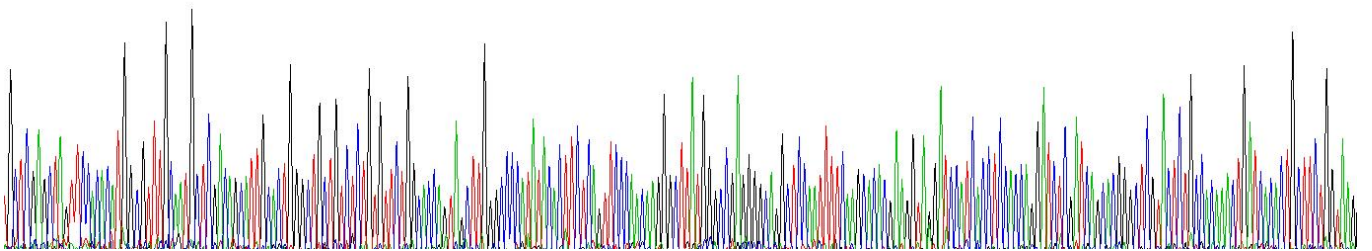
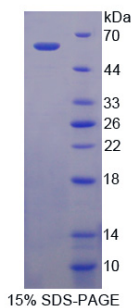
[illegible]

Figure . Gene Sequencing (extract)



[IMPORTANT NOTE]

The kit is designed for research use only, we will not be responsible for any issue if the kit was used in clinical diagnostic or any other procedures.