

**RPA127Hu01 10µg**

**Recombinant Protease Activated Receptor 4 (PAR4)**

**Organism Species: *Homo sapiens (Human)***

***Instruction manual***

FOR RESEARCH USE ONLY

NOT FOR USE IN CLINICAL DIAGNOSTIC PROCEDURES

---

13th Edition (Revised in Aug, 2023)

**[ PROPERTIES ]**

**Source:** Prokaryotic expression

**Host:** *E.coli*

**Residues:** Gly48~Gln385

**Tags:** N-terminal His and GST Tag

**Subcellular Location:** Membrane

**Purity:** > 97%

**Traits:** Freeze-dried powder

**Buffer formulation:** 20mM Tris, 150mM NaCl, pH8.0, containing 1mM EDTA, 1mM DTT, 0.01% SKL, 5% Trehalose .

**Original Concentration:** 200µg/mL

**Applications:** Positive Control; Immunogen; SDS-PAGE; WB.

(May be suitable for use in other assays to be determined by the end user.)

**Predicted isoelectric point:** 8.6

**Predicted Molecular Mass:** 66.3kDa

**Accurate Molecular Mass:** 66kDa as determined by SDS-PAGE reducing conditions.

**[ USAGE ]**

Reconstitute in 20mM Tris, 150mM NaCl (pH8.0) to a concentration of 0.1-1.0 mg/mL. Do not vortex.

**[ STORAGE AND STABILITY ]**

**Storage:** Avoid repeated freeze/thaw cycles.

Store at 2-8°C for one month.

Aliquot and store at -80°C for 12 months.

**Stability Test:** The thermal stability is described by the loss rate. The loss rate was determined by accelerated thermal degradation test, that is, incubate the protein at 37°C for 48h, and no obvious degradation and precipitation were observed. The loss rate is less than 5% within the expiration date under appropriate storage condition.

**[ SEQUENCE ]**

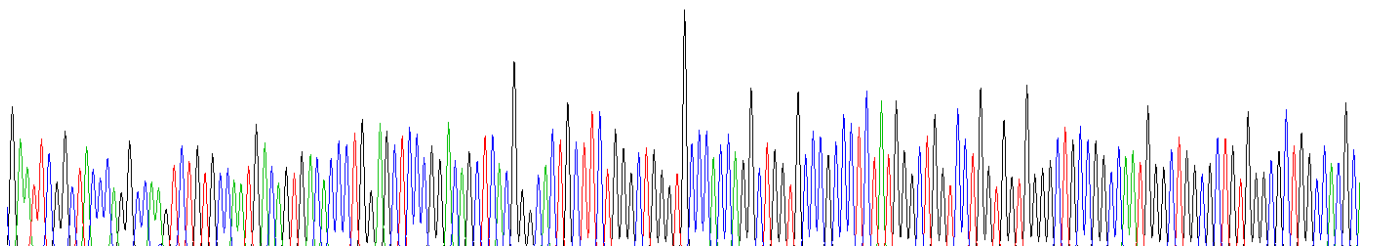
GYP

```

GQVCANDSDT LELPDSSRAL LLGWPTRLV PALYGLVLVW GLPANGLALW
VLATQAPRLP STMLLMNLAA ADLLLALALP PRIAYHLRQ RWPFGAACP
LATAALYGHM YGSVLLLA AVSLDRYLALVH PLRARALRGR RLALGLCMAA
WLMAAALALP LTLQRQTFRL ARSDRVLCHD ALPLDAQASH WQPAFTCLAL
LGCFLPLLAM LLCYGATLHT LAASGRRYGH ALRLTAVVLA SAVAFFVPSN
LLLLLHYS DPSPSANGNLYG AYVPSLALST LN SCVDPFIY YYVSAEFRDK
VRAGLFQRSP GDTVASKASA EGGSRGMGTH SLLQ
    
```

**[ IDENTIFICATION ]**

GAATTCGGCTAACCAGGCCAAGTCTGTGCAATGACAGTGACACCCCTGGAGCTCCCGGACAGCTCAAGGGCACCTGCTTCTGGGCTGGGTGCCACCAAGGCTGGTGCCGCCCTCTATGGGCTGGTCTGGTGGTGGGCTGCCGCCAATGGGCTTGGGCTGTGGGCTGGGCAAGC



**Figure . Gene Sequencing (extract)**

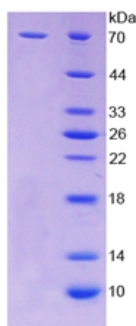


Figure. SDS-PAGE

**[ IMPORTANT NOTE ]**

The kit is designed for research use only, we will not be responsible for any issue if the kit was used in clinical diagnostic or any other procedures.