

**RPC768Hu01 2mg**

**Recombinant Retinal Pigment Epithelium Specific Protein 65kDa (RPE65)**

**Organism Species: *Homo sapiens (Human)***

***Instruction manual***

FOR RESEARCH USE ONLY

NOT FOR USE IN CLINICAL DIAGNOSTIC PROCEDURES

---

12th Edition (Revised in Aug, 2016)

**[ PROPERTIES ]**

**Source:** Prokaryotic expression

**Host:** *E.coli*

**Residues:** Ser2~Ser533

**Tags:** N-terminal His Tag

**Subcellular Location:** Membrane, Cytoplasm

**Purity:** > 90%

**Traits:** Freeze-dried powder

**Buffer formulation:** PBS, pH7.4, containing 0.01% SKL, 5% Trehalose.

**Original Concentration:** 400µg/mL

**Applications:** Positive Control; Immunogen; SDS-PAGE; WB.

(May be suitable for use in other assays to be determined by the end user.)

**Predicted isoelectric point:** 6.0

**Predicted Molecular Mass:** 64.5kDa

**Accurate Molecular Mass:** 65kDa as determined by SDS-PAGE reducing conditions.

**[ USAGE ]**

Reconstitute in 10mM PBS (pH7.4) to a concentration of 0.1-1.0 mg/mL. Do not vortex.

**[ STORAGE AND STABILITY ]**

**Storage:** Avoid repeated freeze/thaw cycles.

Store at 2-8°C for one month.

Aliquot and store at -80°C for 12 months.

**Stability Test:** The thermal stability is described by the loss rate. The loss rate was determined by accelerated thermal degradation test, that is, incubate the protein at 37°C for 48h, and no obvious degradation and precipitation were observed. The loss rate is less than 5% within the expiration date under appropriate storage condition.

**[ SEQUENCE ]**

SIQVEHPAG GYKKLFETVE ELSSPLTAHV TGRIPLWLTG SLLRCGPGLF EVGSEPFYHL FDGQALLHKF DFKEGHVTYH  
 RRFIRTDAYV RAMTEKRIVI TEFGTCAFPD PCKNIFSRFF SYFRGVEVTD NALVNVYPVG EDYYACTETN FITKINPETL  
 ETIKQVDLCN YVSVNGATAH PHIENDGTVY NIGNCFGKNF SIAYNIVKIP PLQADKEDPI SKSEIVVQFP CSDRFKPSYV  
 HSFGLTPNYI VVETPVKIN LFKFLSSWSL WGANYMDCFE SNETMGVWLH IADKKRKKYL NNKYRTSPFN LFHHINTYED  
 NGFLIVDLCC WKGFEFVYNY LYLANLRENV EEVKKNARKA PQPEVRRYVL PLNIDKADTG KNLVTLPNNT ATAILCSDET  
 IWLEPEVLFS GPRQAFEPQ INYQKYCGKP YTYAYGLGLN HFVPDRLLCKL NVKTKETWW QEPDSYPSEP IFVSHPDAL  
 EDDGVVLSV VSPGAGQKPA YLLILNAKDL SEVARAEVEI NIPVTFHGLF KKS

**[ IDENTIFICATION ]**

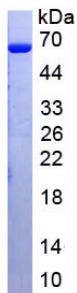


Figure. SDS-PAGE

**[ IMPORTANT NOTE ]**

The kit is designed for research use only, we will not be responsible for any issue if the kit was used in clinical diagnostic or any other procedures.