

RPC776Hu01 1

Recombinant Retinaldehyde Binding Protein 1 (RLBP1)

Organism Species: *Homo sapiens (Human)*

Instruction manual

FOR RESEARCH USE ONLY

NOT FOR USE IN CLINICAL DIAGNOSTIC PROCEDURES

13th Edition (Revised in Aug, 2023)

[PROPERTIES]

Source: Prokaryotic expression

Host: *E.coli*

Residues: Met1~ Phe317

Tags: N-terminal His Tag

Subcellular Location: Cytoplasm

Purity: > 97%

Traits: Freeze-dried powder

Buffer formulation: PBS, pH7.4, containing 0.01% SKL, 5% Trehalose.

Original Concentration: 100µg

Applications: Positive Control; Immunogen; SDS-PAGE; WB.

(May be suitable for use in other assays to be determined by the end user.)

Predicted isoelectric point: 5.0

Predicted Molecular Mass: 40.2kDa

Accurate Molecular Mass: 40kDa as determined by SDS-PAGE reducing conditions.

[USAGE]

Reconstitute in 10mM PBS (pH7.4) to a concentration of 0.1-1.0 mg/mL. Do not vortex.

[STORAGE AND STABILITY]

Storage: Avoid repeated freeze/thaw cycles.

Store at 2-8°C for one month.

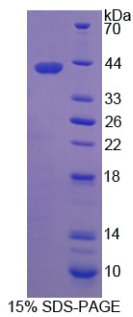
Aliquot and store at -80°C for 12 months.

Stability Test: The thermal stability is described by the loss rate. The loss rate was determined by accelerated thermal degradation test, that is, incubate the protein at 37°C for 48h, and no obvious degradation and precipitation were observed. The loss rate is less than 5% within the expiration date under appropriate storage condition.

[SEQUENCE]

MSEGVGTFRM	VPEEEQELRA	QLEQLTTKDH	GPVFGPCSQL	PRHTLQKAKD
ELNEREETRE	EAVRELQEMV	QAQAASGEEL	AVAVAERVQE	KDSGFFLRFI
RARKFNVGRA	YELLRGYVNF	RLQYPELFDS	LSPEAVRCTI	EAGYPGVLSS
RDKYGRVVML	FNIENWQSQE	ITFDEILQAY	CFILEKLEN	EETQINGFCI
IENFKGFTMQ	QAASLRTSDL	RKMVDMLQDS	FPAFKAHF	IHQPWYFTTT
YNVVKPFLKS	KLLERVFVHG	DDLSGFYQEI	DENILPSDFG	GTLPKYDGKA
VAEQLFGPQA	QAENTAF			

[IDENTIFICATION]



[IMPORTANT NOTE]

The kit is designed for research use only, we will not be responsible for any issue if the kit was used in clinical diagnostic or any other procedures.