

**RPH195Hu01 100ug**

**Recombinant Scavenger Receptor Class A Member 5 (SCARA5)**

**Organism Species: *Homo sapiens (Human)***

***Instruction manual***

FOR RESEARCH USE ONLY

NOT FOR USE IN CLINICAL DIAGNOSTIC PROCEDURES

---

13th Edition (Revised in Aug, 2023)

**[ PROPERTIES ]**

**Source:** Prokaryotic expression

**Host:** *E.coli*

**Residues:** Gln118~His495

**Tags:** N-terminal His Tag

**Subcellular Location:** Membrane

**Purity:** > 90%

**Traits:** Freeze-dried powder

**Buffer formulation:** PBS, pH7.4, containing 0.01% SKL, 5% Trehalose.

**Original Concentration:** 200µg/mL

**Applications:** Positive Control; Immunogen; SDS-PAGE; WB.

(May be suitable for use in other assays to be determined by the end user.)

**Predicted isoelectric point:** 6.2

**Predicted Molecular Mass:** 44.7kDa

**Accurate Molecular Mass:** 45kDa as determined by SDS-PAGE reducing conditions.

**[ USAGE ]**

Reconstitute in 10mM PBS (pH7.4) to a concentration of 0.1-1.0 mg/mL. Do not vortex.

**[ STORAGE AND STABILITY ]**

**Storage:** Avoid repeated freeze/thaw cycles.

Store at 2-8°C for one month.

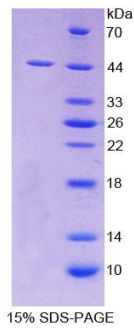
Aliquot and store at -80°C for 12 months.

**Stability Test:** The thermal stability is described by the loss rate. The loss rate was determined by accelerated thermal degradation test, that is, incubate the protein at 37°C for 48h, and no obvious degradation and precipitation were observed. The loss rate is less than 5% within the expiration date under appropriate storage condition.

**[ SEQUENCE ]**

QAD LTEQVWKVQD ALQNQSDSLL ALAGAVQRLE  
GALWGLQAQA VQTEQAVALL RDRTCQQSDT AQLELYQLQV ESNSSQLLLR  
RHAGLLDGLA RRVGILGEEL ADVGGVLRGL NHSLSYDVAL HRTRLQDLRV  
LVSNA SEDTR RLRLAHVGME LQLKQELAML NAVTEDLRLK DWEHSIALRN  
ISLAKGPPGP KGDQGDEGKE GRPGIPGLPG LRGLPGERGT PGLPGPKGDD  
GKLGATGPMC MRGFKGDRGP KGEKGEKDR AGDASGVEAP MMIRLVNGSG  
PHEGRVEVYH DRRWGTVCDD GWDKKDGDV CRMLGFRGVE EVYRTARFGQ  
GTGRIWMDDV ACKGTEETIF RCSFSKWGVT NCGHAEDASV TCNRH

**[ IDENTIFICATION ]**



**[ IMPORTANT NOTE ]**

The kit is designed for research use only, we will not be responsible for any issue if the kit was used in clinical diagnostic or any other procedures.