

RPC010Hu01 50µg

Recombinant Serpin A10 (SERPINA10)

Organism Species: *Homo sapiens (Human)*

Instruction manual

FOR RESEARCH USE ONLY

NOT FOR USE IN CLINICAL DIAGNOSTIC PROCEDURES

13th Edition (Revised in Aug, 2023)

[PROPERTIES]

Source: Prokaryotic expression

Host: *E.coli*

Residues: Pro24~Leu444

Tags: N-terminal His and GST Tag

Subcellular Location: Secreted

Purity: > 80%

Traits: Freeze-dried powder

Buffer formulation: PBS, pH7.4, containing 0.01% SKL, 5% Trehalose .

Original Concentration: 200µg/mL

Applications: Positive Control; Immunogen; SDS-PAGE; WB.

(May be suitable for use in other assays to be determined by the end user.)

Predicted isoelectric point: 8.1

Predicted Molecular Mass: 78.3kDa

Accurate Molecular Mass: 80kDa as determined by SDS-PAGE reducing conditions.

[USAGE]

Reconstitute in 10mM PBS (pH7.4) to a concentration of 0.1-1.0 mg/mL. Do not vortex.

[STORAGE AND STABILITY]

Storage: Avoid repeated freeze/thaw cycles.

Store at 2-8°C for one month.

Aliquot and store at -80°C for 12 months.

Stability Test: The thermal stability is described by the loss rate. The loss rate was determined by accelerated thermal degradation test, that is, incubate the protein at 37°C for 48h, and no obvious degradation and precipitation were observed. The loss rate is less than 5% within the expiration date under appropriate storage condition.

[SEQUENCE]

PSPQSPE TPAPQNQTSR VVQAPKEEEE DEQEASEEKA SEEEKAWLMA SRQQLAKETS NFGFSLLRKI SMRHDGNMVF SPFGMSLAMT
GLMLGATGPT ETQIKRGLHL QALKPTKPL LPSLFKGLRE TLSRNLELGL TQGSFAFIHK DFDVKETFFN LSKRYFDTEC VPMNFRNASQ
AKRLMNHYIN KETRGIKPKL FDEINPETKL ILVDYILFKG KWLTPFDPVF TEVDTPHLDK YKTIKVPMMY GAGKFASTFD KNFRCHVLKL
PYQGNATMLV VLMEKMGDHL ALEDYLTDDL VETWLRNMKT RNMEVFFPKF KLDQKYEMHE LLRQMGIRRI FSPFADLSEL SATGRNLQVS
RVLQRTVIEV DERGTEAVAG ILSEITAYSM PPVIKVDPRF HFMIYEETSG MLLFLGRVVN PTL

[IDENTIFICATION]

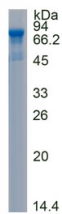


Figure. SDS-PAGE

[IMPORTANT NOTE]

The kit is designed for research use only, we will not be responsible for any issue if the kit was used in clinical diagnostic or any other procedures.