

RPB960Po01 10 μ g
Recombinant Superoxide Dismutase 1, Soluble (SOD1)
Organism Species: *Sus scrofa*; Porcine (Pig)
Instruction manual

FOR RESEARCH USE ONLY
NOT FOR USE IN CLINICAL DIAGNOSTIC PROCEDURES

12th Edition (Revised in Aug, 2016)

[**PROPERTIES**]

Source: Prokaryotic expression

Host: *E.coli*

Residues: Ala2~Gln153

Tags: N-terminal His Tag

Subcellular Location: Nucleus, Cytoplasm

Purity: > 97%

Traits: Freeze-dried powder

Buffer formulation: 100mMNaHCO₃, 500mMNaCl, pH8.3, containing 0.01% SKL, 5% Trehalose.

Original Concentration: 200µg/mL

Applications: Positive Control; Immunogen; SDS-PAGE; WB.

(May be suitable for use in other assays to be determined by the end user.)

Predicted isoelectric point: 6.7

Predicted Molecular Mass: 19.3kDa

Accurate Molecular Mass: 19kDa as determined by SDS-PAGE reducing conditions.

[**USAGE**]

Reconstitute in 100mM NaHCO₃, 500mM NaCl (pH8.3) to a concentration of 0.1-1.0 mg/mL. Do not vortex.

[**STORAGE AND STABILITY**]

Storage: Avoid repeated freeze/thaw cycles.

Store at 2-8°C for one month.

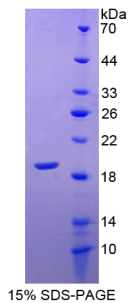
Aliquot and store at -80°C for 12 months.

Stability Test: The thermal stability is described by the loss rate. The loss rate was determined by accelerated thermal degradation test, that is, incubate the protein at 37°C for 48h, and no obvious degradation and precipitation were observed. The loss rate is less than 5% within the expiration date under appropriate storage condition.

[SEQUENCE]

ATKAVCVLK GDGPVQGTIY FELKGEKTVL VTGTIKGLAE GDHGFHVHQF
GDNTQGCTSA GPHFNPEKSK HGGPKDQERH VGDLGNVTAG KDG VATVYIE
DSVIALSGDH SIIGRTMVVH EKPDDLGRGG NEESTKTGNA GSRLACGVIG
ITQ

[IDENTIFICATION]



[IMPORTANT NOTE]

The kit is designed for research use only, we will not be responsible for any issue if the kit was used in clinical diagnostic or any other procedures.