

RPB622Hu01 10µg

Recombinant Surfactant Protein B (SP-B)

Organism Species: *Homo sapiens (Human)*

Instruction manual

FOR RESEARCH USE ONLY

NOT FOR USE IN CLINICAL DIAGNOSTIC PROCEDURES

12th Edition (Revised in Aug, 2016)

[PROPERTIES]

Source: Prokaryotic expression

Host: *E.coli*

Residues: Phe201~Leu381

Tags: N-terminal His and GST Tag

Subcellular Location: Secreted, Extracellular matrix

Purity: > 90%

Traits: Freeze-dried powder

Buffer formulation: PBS, pH7.4, containing 0.01% SKL, 5% Trehalose.

Original Concentration: 50µg/mL

Applications: Positive Control; Immunogen; SDS-PAGE; WB.

(May be suitable for use in other assays to be determined by the end user.)

Predicted isoelectric point: 6.8

Predicted Molecular Mass: 51.1kDa

Accurate Molecular Mass: 51kDa as determined by SDS-PAGE reducing conditions.

[USAGE]

Reconstitute in ddH₂O to a concentration of 0.1-0.5 mg/mL. Do not vortex.

[STORAGE AND STABILITY]

Storage: Avoid repeated freeze/thaw cycles.

Store at 2-8°C for one month.

Aliquot and store at -80°C for 12 months.

Stability Test: The thermal stability is described by the loss rate. The loss rate was determined by accelerated thermal degradation test, that is, incubate the protein at 37°C for 48h, and no obvious degradation and precipitation were observed. The loss rate is less than 5% within the expiration date under appropriate storage condition.

[SEQUENCE]

```
FPIPLPYCWL CRALIKRIQA MIPK GALAVA VAQVCRVVPL VAGGICQCLA  
ERYSVILLDT LLGRMLPQLV CRLVLRCSMD DSAGPRSPTG EWLPRDSECH  
LCMSVTTQAG NSSEQAIPQA MLQACVGSWL DREKCKQFVE QHTPQLLTLV  
PRGWD AHTTC QALGVC GTMS SPLQCIHSPD L
```

[IDENTIFICATION]

G A T T C C T G G C C T G A C G C G A T C T C G G C G A T T C C C A T T C T C C C T A T T C C T G C T C C G G G C T C T G A T C A G C G G A T C A G C C A T G A T T C C C A G G G T G C G T A C T G C G G C G G C G G T G C C C G G T G A T C T C T G C T G C G G G C G G A T C T C C G T G C T C G C T G A C C C A T C C C G T G C C C C T G T C C C C C G A T G C T G C C G C C

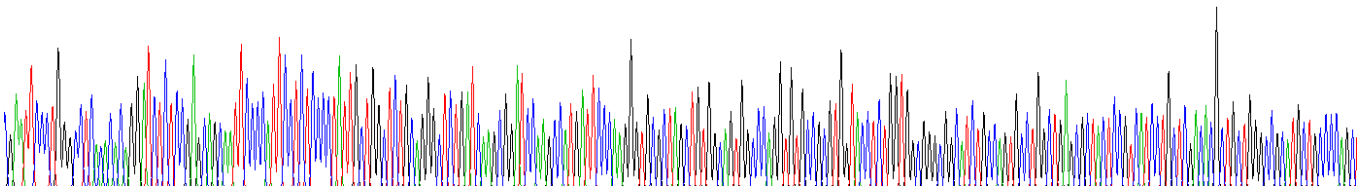


Figure . Gene Sequencing (extract)

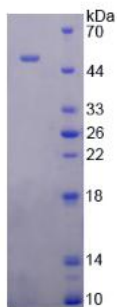


Figure. SDS-PAGE

[IMPORTANT NOTE]

The kit is designed for research use only, we will not be responsible for any issue if the kit was used in clinical diagnostic or any other procedures.