

**RPD822Ra01 50µg**

**Recombinant Thrombospondin 2 (THBS2)**

**Organism Species: *Rattus norvegicus* (Rat)**

***Instruction manual***

FOR RESEARCH USE ONLY

NOT FOR USE IN CLINICAL DIAGNOSTIC PROCEDURES

---

12th Edition (Revised in Aug, 2016)

**[ PROPERTIES ]**

**Source:** Prokaryotic expression

**Host:** *E.coli*

**Residues:** Asp968~Arg1170

**Tags:** N-terminal His and GST Tag

**Subcellular Location:** Secreted

**Purity:** > 97%

**Traits:** Freeze-dried powder

**Buffer formulation:** PBS, pH7.4, containing 0.01% SKL, 5% Trehalose.

**Original Concentration:** 700µg/mL

**Applications:** Positive Control; Immunogen; SDS-PAGE; WB.

(May be suitable for use in other assays to be determined by the end user.)

**Predicted isoelectric point:** 6.4

**Predicted Molecular Mass:** 53.3kDa

**Accurate Molecular Mass:** 53kDa as determined by SDS-PAGE reducing conditions.

**[ USAGE ]**

Reconstitute in 10mM PBS (pH7.4) to a concentration of 0.1-1.0 mg/mL. Do not vortex.

**[ STORAGE AND STABILITY ]**

**Storage:** Avoid repeated freeze/thaw cycles.

Store at 2-8°C for one month.

Aliquot and store at -80°C for 12 months.

**Stability Test:** The thermal stability is described by the loss rate. The loss rate was determined by accelerated thermal degradation test, that is, incubate the protein at 37°C for 48h, and no obvious degradation and precipitation were observed. The loss rate is less than 5% within the expiration date under appropriate storage condition.

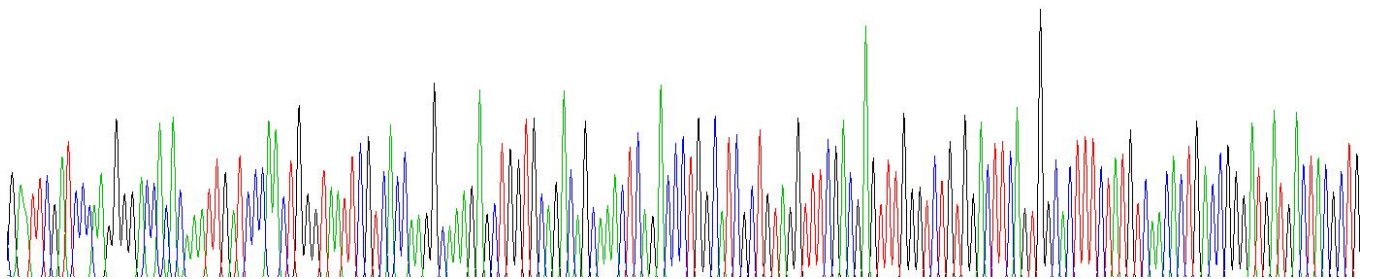
**[ SEQUENCE ]**

```

DPK GTTQIDPNWV IRHQGKELVQ TANSDPGIAV
GFDEFGSVDF SGTFYVNTDR DDDYAGFVFG YQSSSRFYVV MWKQVTQTYW
EDKPSRAYGY SGVSLKVVNS TTGTGEHLRN ALWHTGNTEG QVRTLWHDPK
NIGWKDYTAY RWHLIHRPKT GYMRVLVHEG KQVMADSGPI YDQTYAGGRL
GLFVFSQEMV YFSDLKYECR
    
```

**[ IDENTIFICATION ]**

G A A T T C G A T C C C A A G G G G A C C A C A A A T T G A T C C G A A C T G G G T A A T T C G T C A C C A A G G C A A A G A G C T G G T G C A G A C A G C A A A C T C A G A C C C T G G C A T C G C T G T A G G T T T G A C G A G T T T G G G T C T G T G G A C T T C A G T G C A C T T T C T A T G T C A A C A C T G A C O S G G A T G A T G A C T A C G C T G



**Figure . Gene Sequencing (extract)**

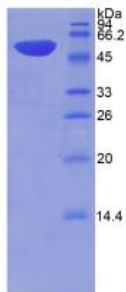


Figure. SDS-PAGE

**[ IMPORTANT NOTE ]**

The kit is designed for research use only, we will not be responsible for any issue if the kit was used in clinical diagnostic or any other procedures.