

RPB989Ra01 100µg

Recombinant Toll Like Receptor 3 (TLR3)

Organism Species: *Rattus norvegicus* (Rat)

Instruction manual

FOR RESEARCH USE ONLY

NOT FOR USE IN CLINICAL DIAGNOSTIC PROCEDURES

12th Edition (Revised in Aug, 2016)

[PROPERTIES]

Source: Prokaryotic expression

Host: *E.coli*

Residues: Ser381~Asp699

Tags: N-terminal His and GST Tag

Subcellular Location: Endoplasmic reticulum lumen

Purity: > 90%

Traits: Freeze-dried powder

Buffer formulation: PBS, pH7.4, containing 0.01% SKL, 5% Trehalose .

Original Concentration: 50µg/mL

Applications: Positive Control; Immunogen; SDS-PAGE; WB.

(May be suitable for use in other assays to be determined by the end user.)

Predicted isoelectric point: 6.4

Predicted Molecular Mass: 66.2kDa

Accurate Molecular Mass: 66kDa as determined by SDS-PAGE reducing conditions.

[USAGE]

Reconstitute in ddH₂O to a concentration of 0.1-0.5 mg/mL. Do not vortex.

[STORAGE AND STABILITY]

Storage: Avoid repeated freeze/thaw cycles.

Store at 2-8°C for one month.

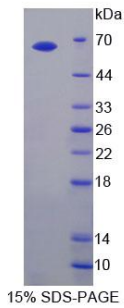
Aliquot and store at -80°C for 12 months.

Stability Test: The thermal stability is described by the loss rate. The loss rate was determined by accelerated thermal degradation test, that is, incubate the protein at 37°C for 48h, and no obvious degradation and precipitation were observed. The loss rate is less than 5% within the expiration date under appropriate storage condition.

[SEQUENCE]

SLKYLSLSTK FTGLQTLTNE
TFVSLTHSPL LTLNLTKNHI SKIASGTFSW LGQLRILDG LNEIEQELTG
QEWRLGNIF EIYLSYNKYL QLTSKSFTLV PSLQRLMLRR VALKSVDISP
SPFRPLYNLT ILDLSNNNIA NLNEDLLEGL ENLEILDFQH NNLARLWKHA
NPGGPVNFLK GLSHLHILNL ESNGLDEIPV KVFKNLFELK SINLGLNNLN
TLLPSIFDDQ TSLRSLNLQK NLITSVEKSV FGPAFHNLS LDMSFNPFDC
TCESIAWFVT WLNQHTNIP ELSTHYLCNT PQRVHGLPVK LFDTSACKD

[IDENTIFICATION]



[IMPORTANT NOTE]

The kit is designed for research use only, we will not be responsible for any issue if the kit was used in clinical diagnostic or any other procedures.