

RPA753Hu01 50µg

Recombinant Toll Like Receptor 4 (TLR4)

Organism Species: *Homo sapiens (Human)*

Instruction manual

FOR RESEARCH USE ONLY

NOT FOR USE IN CLINICAL DIAGNOSTIC PROCEDURES

13th Edition (Revised in Aug, 2023)

[PROPERTIES]

Source: Prokaryotic expression

Host: *E.coli*

Residues: Phe326~Ile634

Tags: N-terminal His Tag

Subcellular Location: Membrane

Purity: > 95%

Traits: Freeze-dried powder

Buffer formulation: 20mM Tris, pH8.0.

Original Concentration: 200µg/mL

Applications: Positive Control; Immunogen; SDS-PAGE; WB.

(May be suitable for use in other assays to be determined by the end user.)

Predicted isoelectric point: 5.8

Predicted Molecular Mass: 42.0kDa

Accurate Molecular Mass: 40kDa as determined by SDS-PAGE reducing conditions.

[USAGE]

Reconstitute in 20mM Tris,(pH8.0) to a concentration of 0.1-1.0 mg/mL. Do not vortex.

[STORAGE AND STABILITY]

Storage: Avoid repeated freeze/thaw cycles.

Store at 2-8°C for one month.

Aliquot and store at -80°C for 12 months.

Stability Test: The thermal stability is described by the loss rate. The loss rate was determined by accelerated thermal degradation test, that is, incubate the protein at 37°C for 48h, and no obvious degradation and precipitation were observed. The loss rate is less than 5% within the expiration date under appropriate storage condition.

[SEQUENCE]

```

          FSYNF GWQHLELVNC KFGQFPTLKL
KSLKRLTFTS NKGGNFSEV DLPSLEFLDL SRNGLSFKGC CSQSDFGTTS
LKYLDLSFNG VITMSSNFLG LEQLEHLDFQ HSNLQKMFSE SVFLSLRNLI
YLDISHTRR VAFNGIFNGL SSLEVLKMG NSFQENFLPD IFTELRLNLF
LDLSQCQLEQ LSPTAFNSLS SLQVLNMSHN NFFSLDTFPY KCLNSLQVLD
YSLNHIMTSK KQELQHFPSS LAFLNLTQND FACTCEHQSF LQWIKDQRQL
LVEVERMECA TPSDKQGMPV LSLNITQMN KTII
    
```

[IDENTIFICATION]

F S Y N F G W Q H L E L V N C K F G Q F P T L K L K S L K R L T F T S N K G G N A F S E V D L P S L E F L D L S R N G L S F K G C C S Q S D

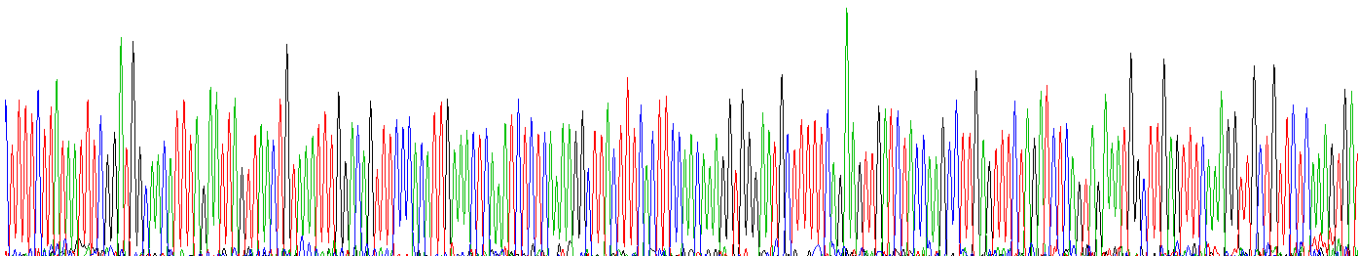
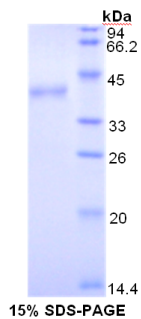


Figure. Gene Sequencing (Extract)



[IMPORTANT NOTE]

The kit is designed for research use only, we will not be responsible for any issue if the kit was used in clinical diagnostic or any other procedures.