

RPB990Mu01 1

Recombinant Toll Like Receptor 5 (TLR5)

Organism Species: *Mus musculus* (Mouse)

Instruction manual

FOR RESEARCH USE ONLY

NOT FOR USE IN CLINICAL DIAGNOSTIC PROCEDURES

12th Edition (Revised in Aug, 2016)

[PROPERTIES]

Source: Prokaryotic expression

Host: *E.coli*

Residues: Lys313~Leu618

Tags: N-terminal His and GST Tag

Subcellular Location: Membrane

Purity: > 90%

Traits: Freeze-dried powder

Buffer formulation: 100mMNaHCO₃, 500mMNaCl, pH8.3, containing 1mM EDTA, 1mM DTT, 0.01% SKL, 5% Trehalose and Proclin300.

Original Concentration: 200µg/mL

Applications: Positive Control; Immunogen; SDS-PAGE; WB.

(May be suitable for use in other assays to be determined by the end user.)

Predicted isoelectric point: 5.1

Predicted Molecular Mass: 64.7kDa

Accurate Molecular Mass: 66kDa as determined by SDS-PAGE reducing conditions.

[USAGE]

Reconstitute in ddH₂O to a concentration of 0.1-1.0 mg/mL. Do not vortex.

[STORAGE AND STABILITY]

Storage: Avoid repeated freeze/thaw cycles.

Store at 2-8°C for one month.

Aliquot and store at -80°C for 12 months.

Stability Test: The thermal stability is described by the loss rate. The loss rate was determined by accelerated thermal degradation test, that is, incubate the protein at 37°C for 48h, and no obvious degradation and precipitation were observed. The loss rate is less than 5% within the expiration date under appropriate storage condition.

[SEQUENCE]

KDLKMLNL AFNKINKIGE NAFYGLDSLQ VLNLSYNLLG
 ELYNSNFYGL PRVAYVDLQR NHIGIIQDQT FRLKTLQTL DLRDNALKAI
 GFIPSIQMLV LGGNKLVLHP HIHFTANFLE LSENLENLS DLYFLLRVPQ
 LQFLILNQNR LSSCKAAHTP SENPSLEQLF LTENMLQLAW ETGLCWDVFQ
 GLSRLQILYL SNNYLNFLPP GIFNDLVALR MLSLSANKLT VLSPGSLPAN
 LEILDISRNO LLCPDPALFS SLRVLDTITHN EFVCNCELST FISWLNQTNV
 TLFGSPADV CMYPNSLL

[IDENTIFICATION]

TTGGGAAACCAAGCTTAGAACGCTTTTCTTACAGAAATGCTGAGCTGGGCTGGGAGNCGGCTCTGTGGGATGTTTTTCAGGGCTTTCCGCGCTCCAGATTCCTTAAGCTGAGTAATACTAAGCTTAATTTCTCTCCAGCTGGGATATTTAAGAGCTGGGTCGATTACGGATGCTTAGTCTTAGTCTTAAGAGCTGACCC

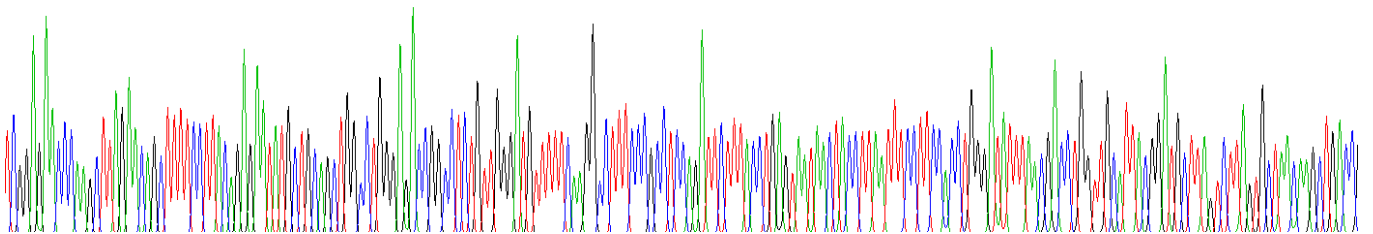
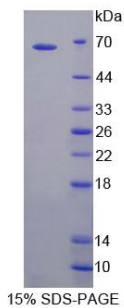


Figure . Gene Sequencing (extract)



[IMPORTANT NOTE]

The kit is designed for research use only, we will not be responsible for any issue if the kit was used in clinical diagnostic or any other procedures.