

**RPA124Ga02 10µg**  
**Recombinant Transforming Growth Factor Beta 1 (TGFb1)**  
**Organism Species: *Chicken (Gallus)***  
***Instruction manual***

FOR RESEARCH USE ONLY  
NOT FOR USE IN CLINICAL DIAGNOSTIC PROCEDURES

---

13th Edition (Revised in Aug, 2023)

## [ **PROPERTIES** ]

**Source:** Prokaryotic expression

**Host:** *E.coli*

**Residues:** Asp260~Ser373

**Tags:** N-terminal His Tag

**Subcellular Location:** Secreted, Extracellular matrix

**Purity:** > 90%

**Traits:** Freeze-dried powder

**Buffer formulation:** 20mM Tris, 150mM NaCl, pH8.0, containing 0.01% skl, 5%Trehalose.

**Original Concentration:** 200µg/mL

**Applications:** Positive Control; Immunogen; SDS-PAGE; WB.

(May be suitable for use in other assays to be determined by the end user.)

**Predicted isoelectric point:** 7.1

**Predicted Molecular Mass:** 16.7kDa

**Accurate Molecular Mass:** 18kDa as determined by SDS-PAGE reducing conditions.

## [ **USAGE** ]

Reconstitute in 20mM Tris, 150mM NaCl (pH8.0) to a concentration of 0.1-1.0 mg/mL. Do not vortex.

## [ **STORAGE AND STABILITY** ]

**Storage:** Avoid repeated freeze/thaw cycles.

Store at 2-8°C for one month.

Aliquot and store at -80°C for 12 months.

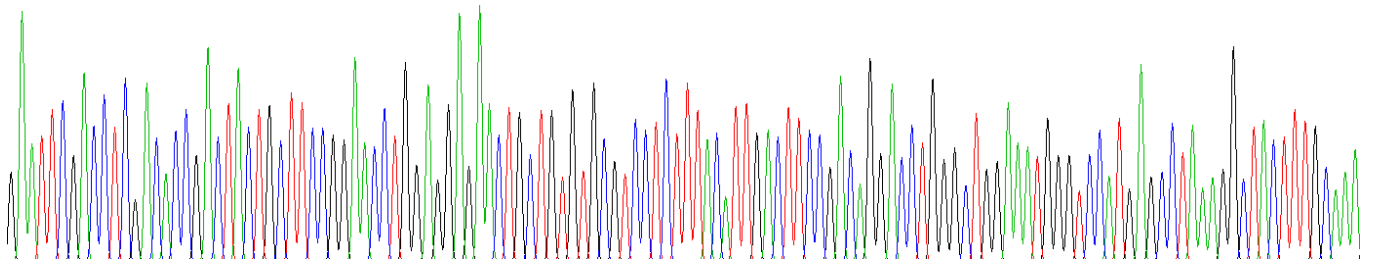
**Stability Test:** The thermal stability is described by the loss rate. The loss rate was determined by accelerated thermal degradation test, that is, incubate the protein at 37°C for 48h, and no obvious degradation and precipitation were observed. The loss rate is less than 5% within the expiration date under appropriate storage condition.

## [ **SEQUENCE** ]

D LDTDYCFGPG TDEKNCCVRP LYIDFRKDLQ WKWIHEPKGY  
 MANFCMGPCP YIWSADTQYT KVLALYNQHN PGASAAPCCV PQTLDPLPII  
 YYVGRNVRVE QLSNMVVRAC KCS

**[ IDENTIFICATION ]**

GAATTCGACCTCGACACCGACTACTGCTTCCGGAACCTGGAGGAGAACTGCTGTGTGGCTCTCTTTACAATTGACTTCCGACAGGACCTGGGCTGGAAATGGGTCCATGAGCCCTAAAGGCTACTTTGCAA



**Figure . Gene Sequencing (extract)**



Figure. SDS-PAGE

**[ IMPORTANT NOTE ]**

The kit is designed for research use only, we will not be responsible for any issue if the kit was used in clinical diagnostic or any other procedures.