

**RPC828Mu01 100µg**

**Recombinant Tripeptidyl Peptidase I (TPP1)**

**Organism Species: Mus musculus (Mouse)**

***Instruction manual***

FOR IN VITRO USE AND RESEARCH USE ONLY

NOT FOR USE IN CLINICAL DIAGNOSTIC PROCEDURES

10th Edition (Revised in Jan, 2014)

## **[ PROPERTIES ]**

**Residues:** Gly198~Pro562

**Tags:** Two N-terminal Tags, His-tag and T7-tag

**Accession:** O89023

**Host:** *E. coli*

**Subcellular Location:** Lysosome. Melanosome.

**Purity:** >95%

**Endotoxin Level:** <1.0EU per 1µg

(determined by the LAL method).

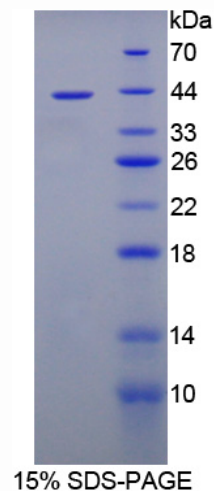
**Formulation:** Supplied as lyophilized form in PBS, pH7.4, containing 5% trehalose, 0.01% sarcosyl.

**Predicted isoelectric point:** 5.9

**Predicted Molecular Mass:** 43.2kDa

**Applications:** SDS-PAGE; WB; ELISA; IP.

(May be suitable for use in other assays to be determined by the end user.)



## **[ USAGE ]**

Reconstitute in sterile PBS, pH7.2-pH7.4.

## **[ STORAGE AND STABILITY ]**

### **Storage: Avoid repeated freeze/thaw cycles.**

Store at 2-8°C for one month.

Aliquot and store at -80°C for 12 months.

**Stability Test:** The thermal stability is described by the loss rate of the target protein. The loss rate was determined by accelerated thermal degradation test, that is, incubate the protein at 37°C for 48h, and no obvious degradation and precipitation were observed. (Referring from China Biological Products Standard, which was calculated by the Arrhenius equation.) The loss of this protein is less than 5% within the expiration date under appropriate storage condition.

## **[ SEQUENCES ]**

The sequence of the target protein is listed below.

GVT PSVLRQRYNL TAKDVGSGTT NNSQACAQFL EQYFHNSDLT EFMRLFGGSF  
THQASVAKVV GKQGRGRAGI EASLDVEYLM SAGANISTWV YSSPGRHEAQ EPFLQWLLLL  
SNESSLPHVH TVSYGDEDED LSSYIQRVN TEFMCAAARG LTLFASGDT GAGCWSVSGR  
HKFRPSFPAS SPYVTTVGGT SFKNPFLITD EVVDYISGGG FSNVFRPPY QEEAVAQFLK  
SSSHLPPSSY FNASGRAYPD VAALSDGYWV VSNMVIPWV SGTSASTPVF GGILSLINEH  
RILNGRPPLG FLNPRLYQQH GTGLFDVTHG CHESCLNEEV EGQGFCSGPG  
WDPVTGWGTP NFPALLKTLL NP